

Adobe® Type Manager® Deluxe 4.1

User Guide



© 1999 Adobe Systems Incorporated. All rights reserved.

Adobe® Type Manager® Deluxe 4.1 User Guide for Windows

This manual, as well as the software described in it, is furnished under license and may be used or copied only in accordance with the terms of such license. The content of this manual is furnished for informational use only, is subject to change without notice, and should not be construed as a commitment by Adobe Systems Incorporated. Adobe Systems Incorporated assumes no responsibility or liability for any errors or inaccuracies that may appear in this book.

Except as permitted by such license, no part of this publication may be reproduced, stored in a retrieval system, or transmitted, in any form or by any means, electronic, mechanical, recording, or otherwise, without the prior written permission of Adobe Systems Incorporated.

Adobe, the Adobe logo, Acrobat, Adobe Garamond, Adobe Type Manager, ATM, PageMaker, and PostScript are trademarks of Adobe Systems Incorporated. Mac is a trademark of Apple Computer, Inc., registered in the United States and other countries. Microsoft, Windows, and Windows NT are either registered trademarks or trademarks of Microsoft Corporation in the United States and/or other countries. All other trademarks are the property of their respective owners.

QuickHelp™ is licensed from Altura Software, Inc. End-user is prohibited from taking any action to derive a source code equivalent for QuickHelp, including reverse assembly or reverse compilation.

Protected by U.S. Patents 5,050,103; 5,200,740; 5,233,336; 5,237,313; 5,255,357; 5,185,818. Patents pending.

Contains an implementation of the LZW algorithm licensed under U.S. Patent 4,558,302.

Adobe Systems Incorporated, 345 Park Avenue, San Jose, California 95110, USA

Notice to U.S. government End Users. The Software and Documentation are “Commercial Items,” as that term is defined at 48 C.F.R. §2.101, consisting of “Commercial Computer Software” and “Commercial Computer Software Documentation,” as such terms are used in 48 C.F.R. §12.212 or 48 C.F.R. §227.7202, as applicable. Consistent with 48 C.F.R. §12.212 or 48 C.F.R. §§227.7202-1 through 227.7202-4, as applicable, the Commercial Computer Software and Commercial Computer Software Documentation are being licensed to U.S. government End Users (A) only as commercial items and (B) with only those rights as are granted to all other end users pursuant to the terms and conditions herein. Unpublished rights reserved under the copyright laws of the United States. Adobe Systems Incorporated, 345 Park Avenue, San Jose, CA 95110-2704.

Printed in the U.S.A.

Part Number: 90018541 (10/99)

Contents

Getting Started

| | |
|----------------------------------|---|
| The ATM Deluxe CD contents | 1 |
| Installing ATM Deluxe | 1 |
| Starting ATM Deluxe | 1 |
| Registering ATM Deluxe | 1 |
| Learning ATM Deluxe | 1 |
| Removing ATM Deluxe | 2 |
| Using the Adobe home page | 2 |

Managing Fonts

Chapter 1

| | |
|--|----|
| About sets | 3 |
| Viewing sets | 3 |
| Previewing fonts | 4 |
| Creating sets | 5 |
| Adding fonts | 5 |
| Searching for fonts | 6 |
| Removing fonts | 7 |
| Activating and deactivating fonts and sets | 8 |
| Managing sets | 10 |

Using Multiple Master Fonts

Chapter 2

| | |
|---|----|
| About multiple master font designs | 13 |
| Creating custom instances | 14 |
| Removing multiple master fonts and instances | 15 |
| Using custom instances you have not created (Windows 95, 98, or later) | 15 |

| | |
|---|---|
| Customizing ATM Deluxe | Chapter 3 |
| | Turning ATM Deluxe on and off 17 |
| | Viewing font information 17 |
| | Customizing the information ATM Deluxe displays 18 |
| | Customizing and printing sample sheets 18 |
| | Changing the location for new fonts 19 |
| | Smoothing on-screen fonts 20 |
| | Customizing font handling 20 |
| | Adjusting the ATM Deluxe cache (Windows 95, 98, or later) . . . 22 |
| Printing | Chapter 4 |
| | Printing files on other computers 23 |
| | Setting download options for the Microsoft PostScript driver (Windows 95, 98, or later) 24 |
| Troubleshooting | Chapter 5 29 |
| | Index 31 |
| Standard Roman Character Set | Appendix 33 |

Getting Started

Welcome to the Adobe® Type Manager® (ATM®) Deluxe 4.1 utility for Microsoft® Windows®. ATM Deluxe is a tool for managing, printing, and displaying PostScript® Type 1 fonts. ATM Deluxe lets you display PostScript fonts on-screen and print PostScript fonts on non-PostScript printers. You can use ATM Deluxe to add, remove, and organize PostScript and TrueType fonts.

The ATM Deluxe CD contents

The ATM Deluxe CD includes the following applications and files:

- The ATM Deluxe installer
- Adobe Type Library fonts
- Adobe Acrobat® Reader
- Technical documents
- Adobe PostScript printer driver

Installing ATM Deluxe

The ATM Deluxe installer program adds the ATM Deluxe software to your hard disk. For system requirements and detailed information on installation, application compatibility, and printer compatibility, see the ATM Deluxe Read Me file on the CD.

Starting ATM Deluxe

By default, ATM Deluxe runs invisibly on your system to display PostScript fonts. However, to install and remove fonts and perform other font management tasks, you need to start ATM Deluxe.

The first time you start ATM Deluxe, a welcome message explains that ATM Deluxe has added installed PostScript and TrueType fonts to a set called Starter Set. You can rename, modify, or remove this set at any time to suit your font management scheme. For more information, see “About sets” on page 3.

To start ATM Deluxe:

Choose Start > Programs > Adobe > Adobe Type Manager > Adobe Type Manager Deluxe 4.1.

Registering ATM Deluxe

Registering your software helps Adobe offer technical support and inform you about new software developments. Please register your copy by filling out and returning the warranty registration card included with your software package.

Learning ATM Deluxe

This guide will help you use ATM Deluxe on two Windows platforms:

- Windows 95, Windows 98, or later (Windows 95, Windows 98, and successor products)
- Windows NT® 4.0 and Windows 2000 Professional

For information on using fonts with applications, and for additional tips and troubleshooting information, see the ATM Deluxe Read Me file included with the software.

This guide assumes you have a working knowledge of your computer and its operating system. Information in this guide is available in online Help.

To get online Help:

Choose Help > Help Topics.

Removing ATM Deluxe

You can remove the ATM Deluxe program from your system easily. Uninstalling ATM Deluxe does not delete any font files from your system, but it may prevent fonts from displaying and printing properly. If you want to remove fonts from your hard disk, you should remove them using ATM Deluxe before uninstalling ATM Deluxe. For more information, see “Removing fonts” on page 7.

Note: *Windows 2000 Professional ships with the ATM font driver, which runs in the background to display PostScript fonts. On other Windows platforms, you install the font driver (and the other ATM Deluxe component, the font manager) when you install ATM Deluxe. In Windows 2000 Professional, uninstalling ATM Deluxe removes only the font manager, not the font driver.*

To remove ATM Deluxe:

- 1 In Windows, choose Start > Programs > Adobe > Adobe Type Manager > Uninstall Adobe Type Manager Deluxe 4.1.
- 2 Click Yes to confirm the removal of ATM Deluxe from your hard disk.

Using the Adobe home page

If you have an Internet connection and a Web browser installed on your system, you can access the Adobe Systems home page on the World Wide Web (at <http://www.adobe.com>) for information and tips on Adobe products and services. From the Adobe Web site, you can purchase and download fonts and certain other Adobe products.

For more information about Adobe technical support resources, see the notice in your software package.

Chapter 1: Managing Fonts

Adobe Type Manager Deluxe is the only program you need to add, remove, and organize your fonts. In addition, ATM Deluxe lets you see what a font looks like before you add it to your system.

About sets

ATM Deluxe lets you organize your fonts into groups known as *sets*. When you create a set, you are not actually moving font files; instead you are grouping representations of those files (similar to Windows shortcuts) into arrangements that work best for you. That means a single font can appear in several sets without duplicate font files taking up hard disk space.

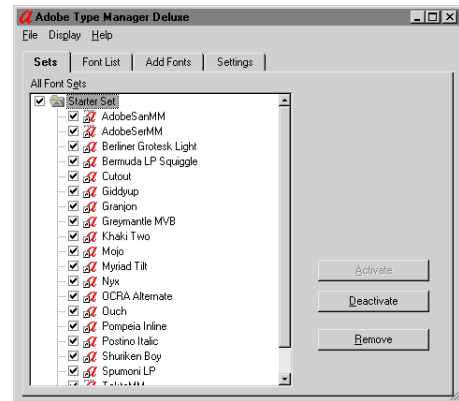
In addition, you can improve the performance of Windows and your Windows applications by turning off or deactivating entire sets or individual fonts you don't need. Deactivating sets or fonts removes fonts from the font menus and lists in your applications but does not remove font files from your hard disk. For more information, see "Activating and deactivating fonts and sets" on page 8.


Viewing sets

In ATM Deluxe, sets appear as folder icons. You can show or hide the fonts in each set, and view the different sets to which a font has been assigned.

To view the fonts in a set:


- 1 In ATM Deluxe, click the Sets tab.
- 2 Double-click a closed folder icon to display the fonts in that set.



 You can also view sets in the Destination list of the Add Fonts tab. To see sets in the Source list, choose Add from Font Sets from the Source list.

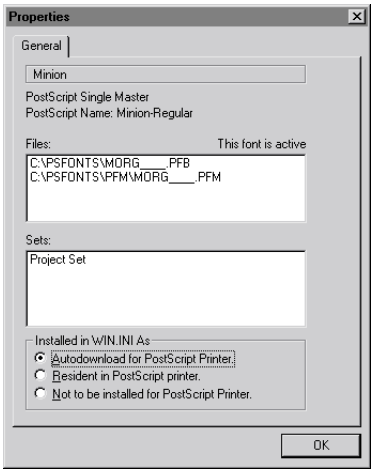
To hide the fonts in a set or all sets:

- 1 In ATM Deluxe, click the Sets tab.
- 2 Double-click an open folder icon to hide the fonts in that set, or choose Display > Close All Open Sets to hide fonts in all sets.

 To hide the fonts in all sets in the Add Fonts tab, choose Set > Close All Open Sets.

To view which sets a font belongs to:

- 1 In ATM Deluxe, click any tab that shows individual fonts.
- 2 Right-click any font and choose Properties. Note the sets (if any) listed for the font.



Previewing fonts

Before you add a font to a set, you may want to see what it looks like. You can preview a font in ATM Deluxe. For information on changing the sample text and printing sample sheets, see “Customizing and printing sample sheets” on page 18.

You cannot preview two special fonts installed with ATM for Windows 95, Windows 98, or later: AdobeSanMM and AdobeSerMM. These multiple master fonts are used for font substitution. For more information about font substitution, see “Customizing font handling” on page 20.

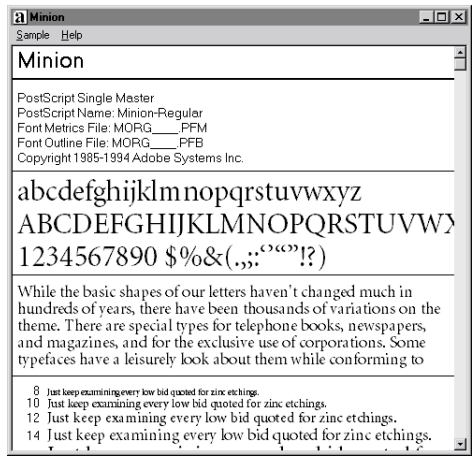
To preview a font with ATM Deluxe:

- 1 In ATM Deluxe, click any tab that shows individual fonts.

Note: You cannot preview a font in an export set. For more information, see “Exporting sets” on page 10.

- 2 Do one of the following:

- Double-click a font name to preview a single font.



- Select up to 30 fonts. Right-click one font in the selection and choose Show Sample.

3 When you are finished previewing the font, choose **Sample > Close**, or **Sample > Close All** to close sample windows. In the **Sets** or **Font List** tabs, you can also choose **Display > Close All Sample Windows**.



You can also preview a PostScript font by double-clicking a font file (any file with the extension .pfm or .pfb) in Windows Explorer or another file utility. This starts ATM Deluxe and opens the font sample window for the font file you double-clicked.

Creating sets

You'll get more out of ATM Deluxe if you organize your fonts into useful sets. For example, you might group fonts by project, by name, or by function (display fonts, body text fonts, symbol fonts) and turn on as many sets as you need for your current work. If multiple users use the same computer, you could create sets for each user.

A set that contains a multiple master instance (either a primary instance or a custom instance) always contains the base font for that instance. This also holds true for multiple master instances added outside any set. ATM Deluxe automatically adds the multiple master base font as needed when you add an instance to a set or outside any set. For information on these terms, see "About multiple master font designs" on page 13.

To create a set:

- 1** In ATM Deluxe, click the **Add Fonts** tab.
- 2** If you want your new set to be active as soon as you create it, select the check box next to [New Set]. For additional information on active and inactive sets, see "Activating and deactivating fonts and sets" on page 8.
- 3** Choose **Set > New** or double-click [New Set] in the **Destination** list.
- 4** Type a name for the set and click **OK**. To add fonts to this set or to create a set and add fonts in a single step, see the next section.

Adding fonts

With ATM Deluxe, the steps for installing new fonts from a floppy disk or CD are the same as adding existing fonts to a set. The only difference is the source you select from which to add the fonts.

For trouble-free use of PostScript and TrueType fonts, use ATM Deluxe to add and remove fonts.

Note: Adobe Type 1 outline fonts are licensed on a per-computer basis. If you use fonts on a network, be sure you're licensed for the number of computers using the fonts. Contact Adobe at 800-682-3623 for details on site licensing.

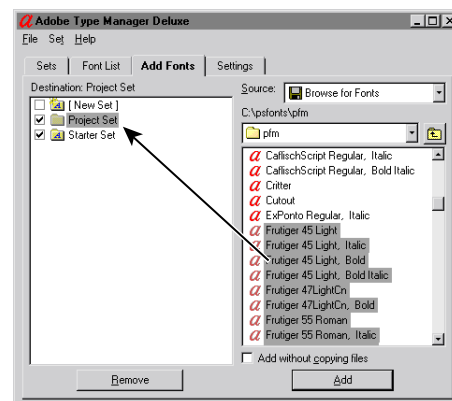
To add a font:

- 1 In ATM Deluxe, click the Add Fonts tab.
- 2 Using the Source list on the right, specify a source for the fonts you want to add:
 - Choose Browse for Fonts to add fonts from a local hard disk, CD, floppy disk, or network drive. Locate the folder that contains the font files you want.
 - Choose Create Multiple Master to add instances of multiple master fonts already installed on your system. For more information, see Chapter 2, “Using Multiple Master Fonts.”
 - Choose Add from Font Sets to add fonts from font sets on your system.
 - Choose Add from Master Font List to add fonts from those on your system.
- 3 Select the fonts you want to add from the Source list.
- 4 If you chose Browse for Fonts in step 2 and want to add fonts without copying any font files to your hard disk, select Add without Copying Files. This is useful if you use fonts directly from a CD or network drive. If a network drive goes off line, or if you do not have the correct CD available, fonts remain installed, but the fonts may not display or print correctly.


Note: ATM Deluxe for Windows 95, Windows 98, or later substitutes other fonts for the missing fonts if Enable Font Substitution is selected in the Advanced Settings dialog box. For more information, see “Customizing font handling” on page 20.

5 Do one of the following:

- Drag and drop the selected fonts on a set, [New Set], or outside any set in the Destination list. For a new set, type a name and click OK.



- Select a set, select [New Set], or click outside any set in the Destination list on the left. Then click Add. If you selected [New Set], type a name and click OK.

 If you choose Add from Font Sets from the Source list, you can drag one or more sets and drop them on a set in the Destination list. All the fonts in the dragged sets will be added to the set in the Destination list.

Searching for fonts

If you normally keep your font files in a number of different folders on your hard disk or you want to install fonts from multiple folders on a CD or network, use the Search command to simplify the process of adding fonts.

The Search command tells ATM Deluxe to look for fonts that are not installed on your system, to create a set named Search Results if it does not exist, and to add the fonts to this set. After that, you can copy the fonts to any set you want. ATM Deluxe skips any fonts that are already added to your system. If the Search command finds duplicate font files that have not been installed, only the first one found will be added.

To search for and add uninstalled fonts:

- 1 In ATM Deluxe, click the Add Fonts tab.
- 2 If you already have an active set named Search Results, either rename it or deactivate it. ATM Deluxe cannot search for fonts with the Search Results set active. For more information, see “Activating and deactivating fonts and sets” on page 8 and “Renaming a set” on page 12.
- 3 Choose File > Search.
- 4 Click Browse to specify a disk drive or folder from which to start the search. ATM Deluxe will look for fonts in all folders within the starting place you designate. You can only search one disk at a time.
- 5 During a search, ATM Deluxe defaults to adding fonts without copying any font files to your hard disk. However, if you want ATM Deluxe to copy the files it finds to your target font folders, deselect this option. For more information about target folders, see “Changing the location for new fonts” on page 19.
- 6 Click Begin Search.

7 Click OK to confirm the number of fonts, if any, that the Search command found and added. To begin a new search (on another drive, for example), go back to step 4.

8 Rename the Search Results set, or copy the newly found fonts into other sets and then delete the empty Search Results set. For additional information, see “Adding fonts” on page 5 and “Renaming a set” on page 12.

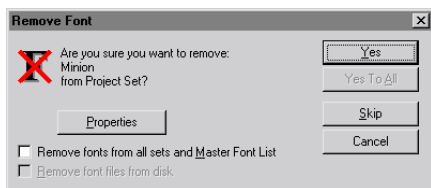
Removing fonts

You may want to remove a font you no longer use. You can remove the font files completely from your hard disk or just remove the font from one set or all sets, leaving the font files on your hard disk. If you remove a font’s files from your hard disk and later need that font again, you must reinstall it from the original disk.

To remove a font:

- 1 In ATM Deluxe, click the Sets tab or the Add Fonts tab.
- 2 Select the fonts you want to remove. If you are using the Add Fonts tab, select fonts in the Destination list.
- 3 Click the Remove button. You can also right-click a font or a selection of fonts and choose Remove.
- 4 For each font in your selection, ATM Deluxe prompts you with a number of options:

- To remove the font from every set and from the font list, select Remove Fonts from All Sets and Master Font List. To remove the font from the current set only, leave this option deselected.
- To delete font files, select Remove Font Files from Disk. To use this option, you must first select the previous option.
- If you are not certain whether the font is on your hard disk or a network drive, click Properties to verify the location of the files that will be removed.



Note: If you are about to remove files from a network drive and other people may be using them, click Cancel to close the Properties dialog box and make sure Remove Font Files from Disk is deselected.

5 Choose one of the following options:

- Click Yes to confirm removal of the font named in the dialog box.
- Click Skip to leave the font installed and go to the next selected font.
- If you don't need to check the properties of each font, click Yes To All to remove all selected fonts.

Activating and deactivating fonts and sets

The ability to activate or deactivate fonts and sets lets you simplify font menus and speed up your system. Because inactive fonts do not appear on the font menus of your applications or take up any system resources, you can improve system performance by activating only the fonts you need. Selective activation also helps you ensure that the fonts you need are available, even in applications that limit the number of fonts listed in font menus.

You can activate and deactivate an entire set or individual fonts within a set. If a font exists in more than one set, it will appear in the font menus of your applications any time it is activated in at least one set.

Note: When you use ATM Deluxe to activate or deactivate fonts while other applications are running, the changes usually appear immediately in the application font menus. However, some applications show changes in font menus only after you restart the applications or reselect your printer.

Because each multiple master font instance uses its corresponding base font, ATM Deluxe makes sure the base font is in the same set (or outside any set) and has the same active or inactive status as the instance. For example, if you deactivate a multiple master base font outside any set, instances of that font in the same location will become inactive as well. And if you activate a multiple master instance that is outside any set, its base font will become active as well (if it isn't already). For more information on multiple master fonts, see Chapter 2, "Using Multiple Master Fonts."

To activate or deactivate a font or a set:

- 1 In ATM Deluxe, click the Sets tab.
- 2 Select the check box of any set or font you want to activate. Deselect a check box to deactivate a set or font. A gray check box indicates a set in which at least one font is inactive.



You can also use this method in the Add Fonts tab. Either use the Destination list or choose Add from Font Sets from the Source list.

Deactivating TrueType fonts in the Windows\Fonts folder

ATM Deluxe cannot deactivate True Type fonts located in the Windows\Fonts folder. Before you can deactivate these fonts, you must move their font files to the default TrueType folder used by ATM Deluxe: Windows\Fonts\ATMFolder.

Important: In Windows 95, Windows 98, or later, don't move the following fonts from the Windows\Fonts folder: Courier 10, 12, 15; Modern; MS Sans Serif 8, 10, 12, 14, 18, 24; MS Serif 8, 10, 12, 14, 18, 14; Small Fonts; and Symbol 8, 10, 12, 14, 18, 24. Also, don't remove any hidden system font files, such as Dosapp.fon, Martlett.ttf, and Vgafix.fon. These hidden files don't appear in Windows Explorer or the Fonts Control Panel, but may appear in font management utilities.

To deactivate TrueType fonts in the Windows\Fonts folder:

- 1 In ATM Deluxe, click the Settings tab.
- 2 Make sure the target folder for TrueType files is Windows\Fonts\ATMFolder.
- 3 Click the Add Fonts tab, and add the TrueType fonts again (see "Adding fonts" on page 5). Do not select the Add Without Copying Files option.
- 4 When prompted to specify duplicate font file locations, select Use New for All.
- 5 Click the Font list tab and make sure the fonts you added are inactive. If the fonts are active, click the Sets or Add Fonts tab and then deactivate the fonts (see the preceding procedure).
- 6 In Windows, choose Start > Settings > Control Panel, and then double-click Fonts.
- 7 Remove from the Fonts folder the TrueType fonts you have just added in steps 3 and 4.

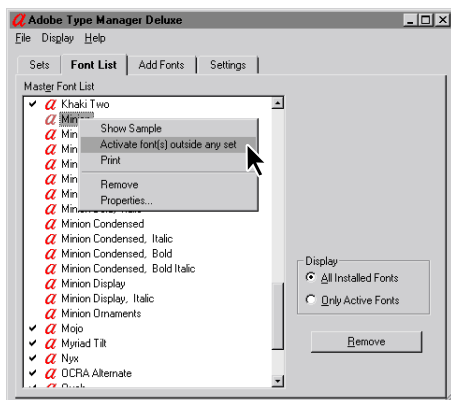
Activating a font from the Font List tab


If you want to activate an inactive font and you don't know what set or sets it is in, you can activate it from the Font List tab. This procedure makes a copy of the font outside any set.

To activate a font from the Font List tab:

- 1 In ATM Deluxe, click the Font List tab.
- 2 Select the font or fonts you want to activate.

3 Right-click a font or one font in a selection and choose Activate Font(s) Outside Any Set.



 You can also use this method in the Add Fonts tab. Choose Add from Master Font List from the Source list. Then right-click a font in the Source list to activate a font as described in the steps above.

Managing sets

ATM Deluxe lets you export, import, and rename sets as well as print a list of fonts in a set.

Exporting sets

Once you've created sets, you can export these sets for use on other computers that run ATM Deluxe, including Mac OS systems. Exporting a set does not copy fonts for moving to other computers, but it simplifies creating sets on other computers that have the same fonts as those sets.

If you use the export feature with multiple sets selected, ATM Deluxe combines those sets into a single export file. However, upon importing them, ATM Deluxe displays each set in the export file separately. This lets you selectively import one or more sets from the export file. If you want to export each set as a separate export file, repeat the following procedure for each set.

The names of exported sets are stored in the export file and are not affected by renaming the export file.



Exporting sets is a good way to store a backup of your font sets. If your sets are ever deleted accidentally, you can restore them by importing the exported sets.

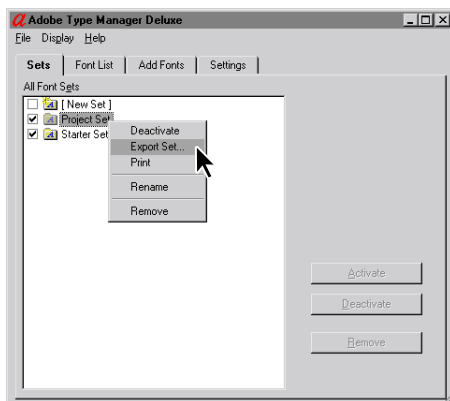
To export a set:

- 1 In ATM Deluxe, click the Sets tab.
- 2 Select one or more sets you want to export.

Note: If you select individual fonts in a set or fonts outside any set (which can't be exported), ATM Deluxe does not include these fonts in the export file.

- 3 Do one of the following:
 - Choose File > Export Set.

- Right-click a set or one set in a selection and choose Export Set.



- 4 Locate the folder in which to store the export file, type a name for the file, and click Save.



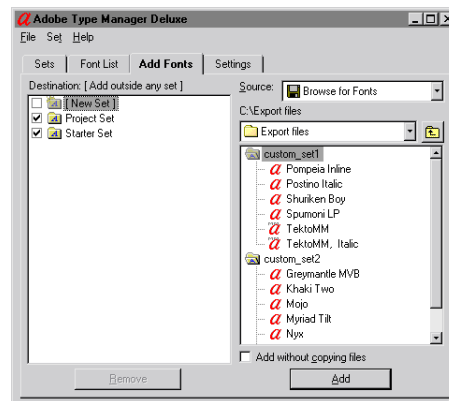
You can also use this method in the Add Fonts tab. Right-click a selection in either the Destination list or the Source list after choosing Add from Font Sets from the Source list.

Importing sets

When importing sets, you can add the imported sets as new, separate sets, or you can combine the fonts in the imported sets into a new or existing set.

To import a set:

- 1 In ATM Deluxe, click the Add Fonts tab.
- 2 Choose Browse for Fonts from the Source list and locate the export file. If the file contains more than one set, you will see multiple sets in the Source list.



- 3 Select one or more sets and do one of the following:

- Drag and drop one or more imported sets onto an empty part of the list to add each imported set as a separate new set.
- Drag and drop two or more imported sets onto [New Set] to combine them into a single new set.
- Drag and drop imported sets onto an existing set to add all the fonts from the imported sets to the existing set.

- 4 If ATM Deluxe cannot locate matching fonts on the destination system, ATM Deluxe prompts you. Locate the missing font files or click Skip.

5 If you import a set that has the same name as an existing set, ATM Deluxe asks whether to add the fonts in the imported set to the set of the same name. If that's not what you want, click Cancel, rename the existing set, and then import the set again. See “Renaming a set” on page 12.

Renaming a set

Although you name a set at the time you create it, you can change it at any time.

To rename a set:

- 1 In ATM Deluxe, click the Sets tab.
- 2 Right-click a set and choose Rename.
- 3 Change the set name and click OK.



You can also use this method in the Add Fonts tab. Either use the Destination list or choose Add from Font Sets from the Source list. In the Destination list, you can either right-click or choose Set > Rename.

Printing a set index

If you want a paper record showing all the fonts in a given set, you can print a set index. The index lists the name of each font. Below each name is a sample of the font that shows as many letters of the alphabet and numerals 0 through 9 as will fit on a single line in 14-point type. The name of the set appears at the top of each page with page numbers at the bottom.

| | |
|---|--|
| Index for Set: Project Set | |
| Minion / Minion-Regular | abcdefghijklmnopqrstuvwxyz ABCDEFGHIJKLMNOPQRSTUVWXYZ 0123456789 |
| Minion, Italic / Minion-Italic | abcdefghijklmnopqrstuvwxyz ABCDEFGHIJKLMNOPQRSTUVWXYZ 0123456789 |
| Minion, Bold / Minion-Semibold | abcdefghijklmnopqrstuvwxyz ABCDEFGHIJKLMNOPQRSTUVWXYZ 0123456789 |
| Minion, Bold Italic / Minion-SemiboldItalic | abcdefghijklmnopqrstuvwxyz ABCDEFGHIJKLMNOPQRSTUVWXYZ 0123456789 |

A set index gives you a paper record of all the fonts in a set complete with type samples.

To print a set index:

- 1 In ATM Deluxe, click the Sets tab.
- 2 Right-click a set and choose Print > Set Index.
- 3 If necessary, adjust settings for your printer and click OK.



You can also use this method in the Add Fonts tab. Either use the Destination list or choose Add from Font Sets from the Source list.

Chapter 2: Using Multiple Master Fonts

You can use multiple master fonts as you would any other PostScript Type 1 font. The main difference is that multiple master fonts let you create your own variations on the base design.

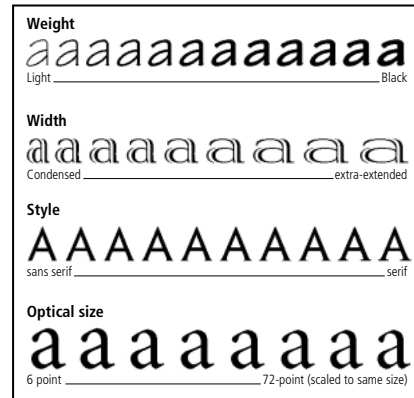
About multiple master font designs

Each multiple master font consists of two parts: the multiple master font itself (called the *base font*) and one or more *instances* of the font. An instance is a particular rendition of the font that varies from other instances in one or more attributes such as weight or width. Because the base font stores information required for printing, ATM Deluxe automatically copies the base font to any set to which you add an instance.

Each multiple master font provides a collection of ready-to-use *primary instances* that constitute a complete typeface family. The typeface designer or manufacturer determines the selection of primary instances. One of the primary instances is designated the *default instance*. The default instance is the instance displayed when you select a multiple master base font.

Each multiple master includes one or more *design axes*. A design axis is a variable typeface attribute, such as weight, width, style, or optical size.

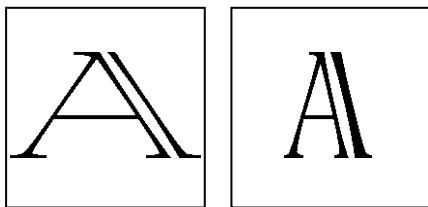
To find out which design axes are included with a given multiple master font, see your multiple master font package. If you have already installed the multiple master font, you can see the design axes available for that typeface in ATM Deluxe. For information about modifying multiple master fonts, see “Creating custom instances” on page 14.



You can vary attributes within the range of each design axis.

Multiple master instances are named in the format *Family_design coordinates*, where *Family* is the name of the typeface and *design coordinates* identifies a particular instance by a string of numbers and letters (for example, VivaMM_385 RG 400 CN).

The design coordinates consist of alphanumeric combinations for each design axis in the font. If the font has a single design axis, there is a single alphanumeric combination (for example, 385 RG for regular weight). If there are two design axes, there will be two alphanumeric combinations, and so on.



Instance names, like VivaMM_250 LT 1500 XE (left) and VivaMM_385 RG 400 CN (right), indicate each font's design attributes.

Within the design coordinate name, the numbers indicate the position of the instance along the design axis. The letters indicate style (regular, bold, condensed) for a primary instance, or the design axis (weight, width, optical size) for a custom instance.

The labels for primary instances included in a multiple master font package use uppercase abbreviations (XL for extra-light), while custom instances use generic lowercase abbreviations (wt for weight and wd for width).

Note: Some font menus and lists in Windows applications are limited in width. Longer instance names may appear clipped.

Creating custom instances

You create *custom instances* of an installed multiple master font by selecting positions along each of the design axes in the multiple master font, adding the instance to a font set on your system, and activating it. After that, the custom instance name appears in ATM Deluxe and in your applications' font menus and lists.

To install one of the primary instances that comes with a multiple master font, add it as you would any other font from its installation disk. See “Adding fonts” on page 5. You can also use the Primaries button as explained below.

To create a custom instance:

- 1 In ATM Deluxe, click the Add Fonts tab.
- 2 From the Source list, choose Create Multiple Masters.
- 3 From the Multiple Master Base Font list, choose the multiple master font you want to work with.
- 4 If you want to start from one of the base font's primary instances, click Primaries. Make sure Show Primary Instances is selected, and then click Close.
- 5 If desired, adjust the size of the sample text by dragging the slider to the right of the sample. This only affects the sample display, not the instance itself.



You can edit the text by right-clicking in the sample and choosing Edit Sample Text. Type a new sample and press Enter.

6 Adjust the design axes values for the instance by dragging the sliders or by entering a new value in the numeric field. Each design axis has its own slider.

7 Select Bold, Italic, or both. Not all styles are available for all multiple master fonts. View the results in the Sample box.

8 Compare different effects side by side by clicking New Window and adjusting different settings. You can open up to five Create Multiple Masters windows. Drag the Create Multiple Masters window to one side so you can compare the samples. To designate a destination set in the new window, select it from the list at the bottom of the window.

When you are satisfied with the design, drag the sample or the instance name under the sliders and drop the instance on a set, on [New Set], or outside any set in the Destination list. For a new set, type a name and click OK. If the destination to which you add an instance does not contain the multiple master base font, ATM Deluxe automatically adds the base font for you.



You can also select a destination in the Destination list and click Add to generate the new instance as you have specified it, or click Add All Styles to generate all available styles for the custom instance, such as bold, italic, or bold italic.

Removing multiple master fonts and instances

To remove custom instances you no longer need, just remove them as you would any other Type 1 font. Follow the steps in “Removing fonts” on page 7.

Important: *If you remove a multiple master base font from a set, ATM Deluxe also removes all of its primary and custom instances.*

Using custom instances you have not created (Windows 95, 98, or later)

In Windows 95, Windows 98, or later, you can open documents that use instances you may not have created on your system. As long as you have the correct multiple master base font installed, ATM Deluxe renders these fonts as needed—on the fly—for the individual document.

Applications vary in the way they handle these on-the-fly instances. Some place the instance name in the application font menu, some display and print the instance correctly but do not place it in the font menu, and some alert you to the presence of the instance in a document so that you can create it yourself.

Chapter 3: Customizing ATM Deluxe

As your font collection grows, so does your need to organize fonts into sets and have access to information about these fonts.

Adobe Type Manager Deluxe not only lets you print font samples and font lists but also provides some statistical information about the sets and fonts you have.

Turning ATM Deluxe on and off

By default ATM Deluxe is turned on upon installation. However, you can turn it off at any time. For example, you might turn ATM Deluxe off when trying to troubleshoot a system problem. Even when ATM Deluxe is off, you can still use it to manage TrueType fonts.

Note: In Windows 2000 Professional, you can't turn ATM Deluxe off.

To turn ATM Deluxe on and off:

- 1 In ATM Deluxe, click the Settings tab.
- 2 For ATM System, click On or Off.
- 3 Click the close box to close ATM Deluxe, and then click OK to acknowledge the prompt to restart Windows. You can restart Windows immediately and see the changes or wait to see your changes the next time you start Windows.

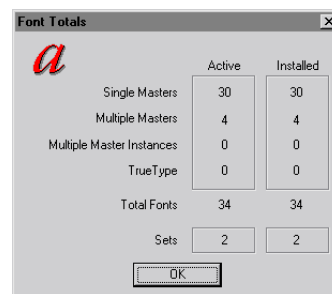
Viewing font information

ATM Deluxe keeps track of the number of fonts that are active and can show you these totals for each font type: Type 1, Type 1 multiple master base font, multiple master instance, and TrueType. The Font Totals dialog box also shows the number of active sets. For information on sets, see “About sets” on page 3.

In addition to font totals, ATM Deluxe can show you a list of every instance that has been added to your system for a particular multiple master base font. You can use this list to select an installed instance, and, if desired, modify it to add a new instance.

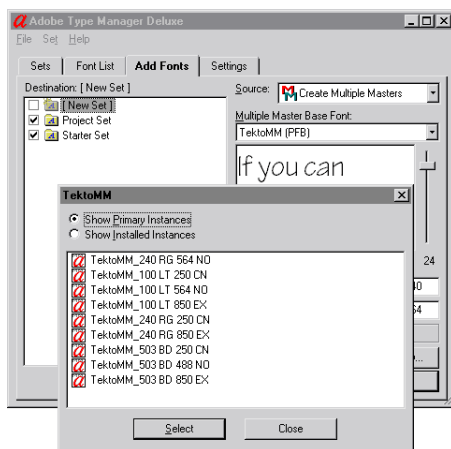
To view font totals:

- 1 In ATM Deluxe, click the Sets tab or click the Font List tab.
- 2 Choose Display > Show Font Totals.



To see what instances have been added for a multiple master base font:

- 1 In ATM Deluxe, click the Add Fonts tab.
- 2 From the Source list, choose Create Multiple Masters.
- 3 From the Multiple Master Base Font list, choose a multiple master base font.
- 4 Click Primaries.
- 5 Select Show Installed Instances.



- 6 If you want to modify one of the instances, select it and click Select, or double-click the instance name. Then either drag the window aside or click Close to modify the instance in ATM Deluxe. For more information, see “Creating custom instances” on page 14.

Customizing the information ATM Deluxe displays

If you want to see at a glance what fonts are active on your system, you can hide inactive fonts and sets on lists in the Sets and Font List tabs in ATM Deluxe.

To change the display for the Font List tab:

- 1 In ATM Deluxe, click the Font List tab.
- 2 Click Only Active Fonts to display only fonts that are active. Click All Installed Fonts to display all fonts.

To change the display for the Sets tab:

- 1 In ATM Deluxe, click the Sets tab.
- 2 Choose Display > Display Active Fonts to see only sets that have at least one active font, as well as active fonts outside any set. Choose Display > Display Font Sets to display all font sets and fonts outside any set.

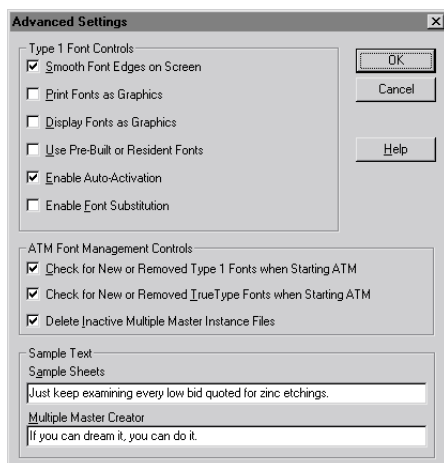
Customizing and printing sample sheets

Previewing fonts on-screen can help you decide whether a font is appropriate for your current job or for a set you’re creating. But you may find it faster to keep and refer to a collection of printed samples. Printed copies can also be given to others who get printed output from your system. The printed sample sheet has the same information as the on-screen version.

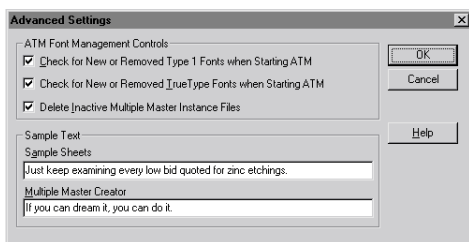
You can customize the sample text you see on-screen and in printed sample sheets. For information on previewing fonts on-screen, see “Previewing fonts” on page 4.

To change the sample text:

- 1 In ATM Deluxe, click the Settings tab.
- 2 Click Advanced. For Sample Text, modify the text in the Sample Sheets box. Then click OK. The change takes effect the next time you display or print a sample sheet.




Advanced Settings dialog box for Windows 95, Windows 98, or later



Advanced Settings dialog box for Windows NT or Windows 2000 Professional

To print a sample sheet:

- 1 In ATM Deluxe, click any tab that shows individual fonts.
- 2 Select one or more fonts or sets (except fonts in an export set) for which you want to print sample sheets.
- 3 Right-click a selected font and choose Print > Sample Sheets.
- 4 If necessary, adjust settings for your printer. Then click OK.

 You can also print a sample sheet from the sample sheet window. Open a sample sheet window as described in “Previewing fonts” on page 4. Then choose Sample > Print, adjust printer settings as needed, and click OK. This is the way to print a sample sheet for a font you have not added to your system.

Changing the location for new fonts

When you add a font to your system, you can designate whether ATM Deluxe copies the font files to your hard disk or leaves them on their source disk (see “Adding fonts” on page 5). When you first installed ATM Deluxe, you chose a default location for copying font files. You can change that location at any time using ATM Deluxe. You can also set a location for TrueType font files.

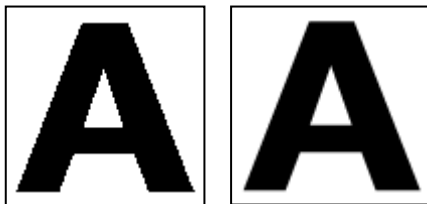
Note: If you change the location and then add a font already on your system, ATM Deluxe will detect the duplicate and will ask you which copy to use.

To set a location for font files:

- 1 In ATM Deluxe, click the Settings tab.
- 2 Under Target Folders for New Fonts, type a folder path for PostScript font outline files, PostScript font metrics files, and TrueType font files in the spaces provided. To locate an existing folder, click the appropriate Browse button, locate and open the folder, and click Select.

Smoothing on-screen fonts

You can use ATM Deluxe to apply *anti-aliasing*—a technique for blending colors along an edge to provide a smoother, softer edge to your Type 1 fonts on-screen.



Smoothing off and smoothing on

To smooth PostScript fonts (Windows 95, Windows 98, or later):

- 1 In ATM Deluxe, click the Settings tab, and then click Advanced.
- 2 Select Smooth Font Edges on Screen and click OK.

Note: *Anti-aliasing can slow down type-intensive displays on some systems. You can speed the display of type by increasing the ATM Deluxe font cache; see “Adjusting the ATM Deluxe cache (Windows 95, 98, or later)” on page 22.*

To smooth PostScript and TrueType screen fonts (Windows NT or Windows 2000 Professional):

- 1 In Windows, choose Start > Settings > Control Panel.
- 2 Double-click the Display icon.
- 3 Click the Plus! tab (Windows NT) or the Effects tab (Windows 2000 Professional).
- 4 Make sure Smooth Edges of Screen Fonts is selected, and then click OK.

Customizing font handling

ATM Deluxe can manage fonts even if they were installed without using ATM Deluxe. It also lets you decide how to handle inactive multiple master instance files. In Windows 95, Windows 98, or later, ATM Deluxe can provide substitutes for missing fonts and specify what kind of font information is sent to your printer or screen.

To customize font handling settings:

- 1 In ATM Deluxe, click the Settings tab.
- 2 Click Advanced.
- 3 Select or deselect the following options and click OK.

Check for New or Removed Type 1 Fonts When Starting ATM Deluxe. Tells ATM Deluxe to manage PostScript fonts installed or removed by a program other than ATM Deluxe. When this option is selected, the next time you start ATM Deluxe, it adds PostScript fonts installed by another program as active fonts outside any set.

Check for New or Removed TrueType Fonts When Starting ATM Deluxe. Tells ATM Deluxe to manage TrueType fonts installed or removed by a program other than ATM Deluxe. When this option is selected, the next time you start ATM Deluxe, it adds TrueType fonts installed by another program as active fonts outside any set. It also removes any fonts removed by another program.

Delete Inactive Multiple Master Instance Files. Deletes instances when they are inactive and re-creates them later when you activate the font. The instance name is still visible in all ATM Deluxe lists, but if you right-click a font and choose Properties, ATM Deluxe reports that the files are missing. Deselecting this option speeds up font and set activation and deactivation but takes up more hard disk space.

Smooth Font Edges on Screen (Windows 95, Windows 98, or later). Smooths the edges of fonts for on-screen display.

Print Fonts as Graphics (Windows 95, Windows 98, or later). Sends fonts to the printer as graphic images rather than downloading the font file itself. This setting may help older PCL printers that cannot use downloadable fonts or when printing documents with mixed text and graphics that don't print correctly. Printing time may increase.

Display Fonts as Graphics (Windows 95, Windows 98, or later). Sends fonts to your monitor as graphic images instead of generating screen fonts from the font files. Use this setting only if you are having difficulty with on-screen font displays. Screen redraw time may increase slightly.

Use Pre-Built or Resident Fonts (Windows 95, Windows 98, or later). Uses bitmap fonts installed in Windows for screen fonts and bitmap fonts resident in the printer for printing. Bitmap fonts take up hard disk space but can help certain applications display and print documents more quickly.

Enable Auto-Activation (Windows 95, Windows 98, or later). Automatically activates an installed but inactive font any time you open a document that uses that font in certain applications. (See the ATM Deluxe Read Me file for application compatibility.) With auto-activation enabled, your otherwise inactive font will display and print properly but won't appear in your applications' font menus and lists.

Enable Font Substitution (Windows 95, Windows 98, or later). Simulates the shape and spacing of a font not installed on your system when you open a document using that font in certain applications. (See the ATM Deluxe Read Me file for application compatibility.) Substitution also occurs for installed but inactive fonts if Enable Auto-Activation is deselected. The substituted font may not match the missing font but will preserve your line breaks and general document appearance until you can obtain the proper font.

***Note:** The intent of font substitution is to provide placeholders for the original typefaces while a work is in progress. Final documents should be produced and printed using the original typefaces.*

Adjusting the ATM Deluxe cache (Windows 95, 98, or later)

ATM Deluxe uses a *cache*—a portion of system memory used to store font data created by ATM Deluxe. A large cache may speed up scrolling and other screen displays of fonts but can limit the amount of memory available to other applications. The default cache size is 512K. If you are using ATM Deluxe for Windows 95, Windows 98, or later, and you typically use many different fonts on a single page, you may want to experiment with a larger cache size.

To adjust the ATM Deluxe cache size:

- 1 In ATM Deluxe, click the Settings tab.
- 2 Click the up or down arrows next to ATM Font Cache to change the amount of memory reserved for the cache.

Click the close box to close ATM Deluxe. When prompted, click Restart to restart Windows immediately and see the changes, or click Continue to see your changes the next time you start Windows.

Chapter 4: Printing

Adobe Type Manager Deluxe lets you control how fonts are sent from your system to the printer. If you want to print your documents on a system other than the one on which they were composed, you may have to take some additional steps in your application to ensure your document is printed with the correct fonts.

Printing files on other computers

To print a document on another computer, you have two choices:

- Create a *print file* or *print-to-disk file*, which is a file created when an application sends printing information for a document to a file instead of to a printer.
- Ensure that both computers have the same fonts.

Printing to a file

When taking your file to another location for output, the new computer does not need to have ATM Deluxe or the same fonts installed, providing you first create a print file. When printing to a non-PostScript printer, this is often as easy as selecting Print to File in your Print dialog box.

If the printer you will use is a PostScript printer, you need to make a PostScript print file and save the necessary fonts with that file. Most applications that can create a PostScript file also have an option for saving the fonts with the file. Consult your application documentation for creating PostScript print files with the fonts you need.

Once you have a print file, you can take that file to another system and use the DOS `copy /b` command to send it to a printer without opening it. For more information on copying a file to a printer, consult your DOS documentation.

Multiple master issues

If it's necessary to open a file in an application to print it, the system from which you print needs to have the same Type 1 fonts as are used in the document. In addition, if your document uses multiple master fonts, you should make sure that the system from which you print has the following software installed:

- The same version of the application that you used to create the document.
- The multiple master base fonts corresponding to the multiple master instances used in the document.
- The same custom instances as used in the document (Windows NT or Windows 2000 Professional).

In Windows 95, Windows 98, or later, you may not need each custom instance used in a document in order to print a document using multiple master fonts. Some applications, like Adobe PageMaker® and Microsoft Word, can re-create custom instances automatically for documents that need them; other applications cannot. If in doubt, check with the manufacturer; also make sure that you are using the latest version of the application.

If your application can't re-create custom instances on other computers, you must install your custom instances on the system from which you will print or give those instances to the service provider that will print your file. If ATM Deluxe is installed on the computer from which the file will be printed, you can transfer the information in custom instances using the export set feature in ATM Deluxe.

***Note:** While it is legal to give your service provider multiple master custom instance files, it is illegal to give them multiple master base fonts (or any other Type 1 font). Always make sure your service provider owns a license for the appropriate multiple master base font or any other fonts needed for your job. (See the license agreement included with your font.)*

To move custom instances to another computer with ATM Deluxe:

- 1 On the first computer, create a set that contains the custom instances you want to take to another computer. See “Creating sets” on page 5 and “Adding fonts” on page 5.
- 2 Export the set with custom instances. See “Exporting sets” on page 10.

- 3 Copy the exported set to a floppy disk or network server and transfer it to the second computer.

- 4 On the second computer, start ATM Deluxe and import the set. See “Importing sets” on page 11.

Setting download options for the Microsoft PostScript driver (Windows 95, 98, or later)

If your system uses the Microsoft PostScript printer driver, you can choose where the printer driver looks for fonts when you print. This choice can affect whether you get the correct font from the printer. The option you choose in the Settings tab affects all future fonts you add, but you can also adjust these options for individual fonts.

In choosing the best option, you need to consider the impact on the WIN.INI file, an important Windows configuration file. For each PostScript font you add to your system, ATM adds a reference to the WIN.INI file indicating the location of the font metrics file and (if you use the autodownloading option) the font outline file. In addition, ATM adds one such reference for each printer port used by the Microsoft PostScript driver. If you have installed multiple PostScript printers on different ports (regardless of what is physically connected to your computer), ATM adds a reference for each port for every active font on your system, causing the WIN.INI file to grow in size.

As the file size approaches 64K (the maximum allowable size), you could have unpredictable system problems. To keep the WIN.INI file smaller, try one or more of these suggestions:

- Use the Adobe PostScript printer driver, which doesn't use the WIN.INI file. The Adobe PostScript driver is available on the ATM Deluxe CD and from www.adobe.com.
- Create sets and activate only the sets or fonts you need. See "Creating sets" on page 5.
- If you have PostScript printers installed on multiple ports that you don't use, choose Start > Settings > Printers and delete the printers you don't use. For more information, refer to Windows online help.
- If your printer has fonts installed on its hard disk or if you use a font downloading utility to download fonts to your printer's RAM, designate those fonts as resident in the PostScript printer (see the procedures below).
- Use the "Mark as Not to Be Installed for the PostScript Printer" option (see the following procedure and note the limitations of this option).
- Shorten the path of your font files by installing them to folders such as c:\f and c:\f\pfm. See "Changing the location for new fonts" on page 19.

To set font download options when using the Microsoft PostScript driver:

- 1 In ATM Deluxe, click the Settings tab.
- 2 Click MS PostScript Driver.



3 For new fonts that you add, select one of the options described below and then click OK.

- Select Mark as Autodownload for PostScript Printer to send each font to the printer automatically when it is needed. This ensures that the font will print correctly each time but creates the longest entry in the WIN.INI file.
- Select Mark Fonts as Resident in PostScript Printer for fonts that are on your printer's hard disk or that you download to the printer's RAM. If a font is not at the printer, it won't print correctly. This setting creates a shorter entry in the WIN.INI file for each font.
- Select Mark as Not to Be Installed for the PostScript Printer to have ATM Deluxe send only those characters of a font needed for correct printing. This setting requires no reference in the WIN.INI file but may not produce correct results for applications that generate their own PostScript code, such as PageMaker and QuarkXPress.

For each font, the settings take effect the next time you activate a font.

To modify font download options for an individual font when using the Microsoft PostScript driver:

- 1 In ATM Deluxe, click any tab that shows individual fonts.
- 2 Right-click on any font and choose Properties. For Installed as, select an option as explained in the previous procedure. Then click OK.

Chapter 5: Troubleshooting

This section contains solutions to problems with installing or using ATM Deluxe. For more information, see the ATM Deluxe Read Me file included with your software. Use any word processor or text editor to open and read the file.

Before troubleshooting a display or printing problem, verify that you are using the latest versions of your video and printer drivers.

Characters appear incorrect on-screen or when the document is printed.

Make sure of the following items:

- ATM Deluxe is installed.
- The ATM Deluxe program is turned on in the ATM Deluxe Settings tab.
- You are using a PostScript Type 1 font that is installed in ATM Deluxe.
- You restarted Windows after you installed the ATM Deluxe program.
- None of your activated TrueType fonts has the same name as any of your activated PostScript fonts. If you have two fonts with exactly the same name, deactivate one of the fonts. See “Activating and deactivating fonts and sets” on page 8.
- If the font is a TrueType font you have deactivated in ATM Deluxe, you have moved the font from the Windows\Fonts folder (see “Deactivating TrueType fonts in the Windows\Fonts folder” on page 9).

- Your printer is set for the highest resolution in its setup dialog box.

Characters appear incorrect on-screen but print properly on a PostScript printer.

For each font that is *resident* or built into your printer, install the corresponding font in ATM Deluxe. For more information, see “Adding fonts” on page 5.

Fonts don’t appear in the application font menu.

Try the following solutions:

- In ATM Deluxe, make sure the fonts have been added. A font has been added if its name appears in the list in the Fonts List tab. If you don’t see the names of your fonts, add the fonts again as explained in “Adding fonts” on page 5.
- If the fonts are listed but have no checkmark, click Sets and activate the fonts as explained in “Activating and deactivating fonts and sets” on page 8.
- If the fonts have been added and are active, deactivate the fonts and then activate them again. See “Activating and deactivating fonts and sets” on page 8.
- Restart the application.
- Reselect your printer from within the application.

You add several fonts in the same typeface family, but you only see a few of them in your applications' font menu.

Make sure the fonts are installed and active. For more information, see “Adding fonts” on page 5 and “Activating and deactivating fonts and sets” on page 8. Next, see if the font names have a comma in them, indicating a *style link*—fonts in a typeface family that differ only in the style attributes bold, italic, and bold italic. Style-linked fonts don’t appear in font menus, but all fonts are available by applying the application’s bold and italic attributes.

Windows can only apply four styles (normal, bold, italic, and bold italic). As a result, typeface families that have many variations (such as semibold or black) may consist of multiple style-linked fonts.

In addition, Type 1 fonts have PostScript names, which may not be the same as the names that appear in ATM Deluxe, nor in your font menus.



To see a font’s PostScript name, double-click the font to open its sample sheet, or right-click the font in ATM Deluxe and choose Properties.

For example, the Adobe Garamond® family has six fonts with the following PostScript names:

- AGaramond-Regular
- AGaramond-Semibold
- AGaramond-SemiboldItalic
- AGaramond-Italic
- AGaramond-Bold
- AGaramond-BoldItalic

The corresponding names in ATM Deluxe are:

- AGaramond
- AGaramond, Bold
- AGaramond, Bold Italic
- AGaramond, Italic
- AGaramond Bold
- AGaramond Bold, Italic

Each font name with no comma appears in your font menus; the others do not. Consequently, the above fonts would appear on your font menus only as:

- AGaramond
- AGaramond Bold

To get AGaramond-Semibold, you must apply the bold attribute to text using AGaramond (this actually uses AGaramond, Bold—the font with a comma). To get AGaramond-Bold, you simply apply AGaramond Bold (the font with no comma) to text.

A font you deactivated (or a font in a set you deactivated) still appears in font lists and menus.

The font may be active in another set. If a font is in any active set or is active outside of any set, it will appear in font lists and menus. To see a list of only active fonts, click the Font List tab and choose Display > Display Only Active Fonts. To see what sets a font is in, locate the font in the Font List tab in ATM Deluxe. Then right-click the font and choose Properties. For more information on activating and deactivating fonts and sets, see “Activating and deactivating fonts and sets” on page 8.

One or more fonts in ATM Deluxe appear with a red x in their check box.

The red x indicates a possible problem with a font. Try the following:

- Click the Settings tab and make sure ATM Deluxe is turned on in the ATM System box.
- Right-click the font and choose Properties. In the Files box, check the location of the font files. If the font files are stored on a network drive or CD, you may need to reconnect to the proper network drive or insert the CD.
- Deactivate the font and then activate it again. If prompted, locate and select the requested font file. See “Activating and deactivating fonts and sets” on page 8.
- Reinstall the font. See “Adding fonts” on page 5.
- Exit ATM Deluxe and delete the Atmreg.atm file containing its internal font database. Then restart your system. ATM Deluxe regenerates the file.

- If none of the solutions above remove the red x, there may be a problem with the font. For example, some TrueType fonts lack font information that ATM Deluxe uses when activating a font. If you can see the font in your application’s font menus, you can still use the font despite the red x.

Multiple master custom instances appear in one document but are not available to other applications.

Some applications, such as Adobe PageMaker and Microsoft Word, can create a custom instance as needed if the original multiple master font has been installed. A document that requires a specific custom instance will appear correctly on-screen and print correctly even though the specific custom instance is not installed. To make a custom instance available to your other documents and applications, create it using ATM Deluxe, as explained in “Creating custom instances” on page 14.

The PostScript Driver button is dimmed in the Settings tab and the Installed in WIN.INI as settings in the font Properties dialog box are dimmed (Windows 95, 98, or later).

These options are dimmed unless you have added a PostScript printer using the Microsoft PostScript driver. Other drivers, such as the Adobe PostScript driver, don’t need these options.

The On and Off options are dimmed in the Settings tab (Windows NT or Windows 2000 Professional).

In Windows NT, you must log on as an administrator in order to use these options. In Windows 2000 Professional, these options are dimmed because you can't turn off the ATM font driver.

Two installed fonts do not appear in ATM Deluxe nor in font menus (Windows NT or Windows 2000 Professional).

The fonts AdobeSanMM (whose filenames begin with ZX_____) and AdobeSerMM (whose filenames begin with ZY_____) are special multiple master fonts used by Adobe Acrobat to simulate fonts not embedded in a Portable Document Format (PDF) file. You cannot apply these fonts in any application or preview them in ATM Deluxe.

Index

A

- activating
 - fonts 8–10
 - multiple master fonts 8
 - sets 8
- Add from Font Sets option 6, 9
- Add from Master Font option 6
- Add Without Copying option 6
- adding fonts 5–6
- Adobe home page 2
- anti-aliasing fonts 20
- ATM Deluxe
 - installing 1
 - new features 1
 - removing 2
 - starting 1
 - troubleshooting problems 27
 - turning on and off 17
 - uninstalling 2
- ATM Font Cache option 22

B

- backing up sets 10
- base font 5, 13
- bitmap fonts 21
- Browse for Fonts option 6, 11

C

- Check for New or Removed TrueType Fonts When Starting ATM option 21
- Check for New or Removed Type 1 Fonts When Starting ATM option 20

commands

- Display Active Fonts 18
- Display Font Sets 18
- Search 7
- Show Font Totals 17
- Create Multiple Masters
 - option 14, 18
- creating sets 5
- custom instances
 - creating 14–15
 - defined 14
 - moving 24
 - printing documents with 24
 - troubleshooting 29

D

- deactivating
 - fonts 8–10
 - multiple master fonts 8
 - sets 8
- default instance 13
- Delete Inactive Multiple Master Instance Files option 21
- deleting
 - fonts 7
 - instances 15, 21
- design axis 13
- design coordinates 14
- Display Active Fonts command 18
- Display Font Sets command 18
- Display Fonts as Graphics
 - option 21
- download options, setting 24–25

E

- Enable Font Substitution option 21
- Export Set command 10
- exporting sets 10

F-G

- font cache 22
- Font Totals dialog box 17
- font totals, viewing 17
- fonts
 - activating 8–10
 - adding 5–6
 - anti-aliasing 20
 - bitmap 21
 - deactivating 8–10
 - hiding in sets 3
 - licensing 5
 - multiple master 13
 - not appearing in menus 27–28
 - previewing 4
 - properties 8
 - removing 7–8
 - searching for 6–7
 - smoothing 20
 - substituting 21
 - viewing in sets for 4

H

- hiding fonts in sets 3

I-K

- importing sets 11–12
- installing ATM Deluxe 1

instances

- defined 13
- deleting inactive 21
- removing 15
- viewing 18

L

licensing fonts 5

M

- managing sets 10–12
- Microsoft PostScript driver
 - options 24–25
- multiple master fonts 13
 - activating 8
 - custom instances 14–15
 - deactivating 8
 - design axes 13
 - in sets 5
 - naming conventions 13–14
 - printing issues 23–24
 - removing 15
 - viewing instances 17–18

N-O

new features 1

P-Q

- Post Script fonts, setting download
 - options for 24–25
- previewing fonts 4
- primary instances 13
- print file 23
- Print Fonts as Graphics option 21

printing

- from another computer 23–24
- setting download options 24–25
- to PCL printers 21

print-to-disk file 23

properties 8

R

- removing
 - ATM Deluxe 2
 - fonts 7–8
- renaming sets 12

S

- sample sheets 18–19
- sample text, changing 19
- Search command 7
- searching for fonts 7
- set index 12
- Set Index command 12
- sets
 - activating 8
 - backing up 10
 - creating 5
 - deactivating 8
 - defined 3
 - exporting 10
 - hiding fonts 3
 - importing 11–12
 - managing 10–12
 - multiple master fonts 5
 - renaming 12
 - viewing fonts in 3

Show Font Totals command 17

Show Installed Instances option 18

Show Primary Instances option 14

Smooth Font Edges on Screen

- option 21

smoothing fonts 20

Source list 6

starting ATM Deluxe 1

substituting fonts 21

supported fonts 1

T

troubleshooting 27–29

U

- Uninstall option 2
- Use Pre-Built or Resident Fonts
 - option 21

V

- viewing
 - font totals 17
 - fonts in a set 3
 - instances 18
 - properties 8

W-Z

WIN.INI file 24–25

Windows platforms for ATM

- Deluxe 1

STANDARD ROMAN CHARACTER SET
Character Access Chart for Windows

| KEY CAP | CHAR | SHIFT CHAR | KEY CAP | CHAR | SHIFT CHAR | KEY CAP | CHAR | SHIFT CHAR |
|------------|------|---------------|------------|------|---------------|--------------|------|---------------|
| A | a | A | Q | q | Q | 7 | 7 | & |
| B | b | B | R | r | R | 8 | 8 | * |
| C | c | C | S | s | S | 9 | 9 | (|
| D | d | D | T | t | T | 0 | 0 |) |
| E | e | E | U | u | U | ` | ` | ~ |
| F | f | F | V | v | V | - | - | _ |
| G | g | G | W | w | W | = | = | + |
| H | h | H | X | x | X | [| [| { |
| I | i | I | Y | y | Y |] |] | } |
| J | j | J | Z | z | Z | \ | \ | |
| K | k | K | 1 | 1 | ! | ; | ; | : |
| L | l | L | 2 | 2 | @ | ' | ' | " |
| M | m | M | 3 | 3 | # | , | , | < |
| N | n | N | 4 | 4 | \$ | . | . | > |
| O | o | O | 5 | 5 | % | / | / | ? |
| P | p | P | 6 | 6 | ^ | SPACE BAR | | |

To access the characters on this page only, hold down the Alt key and use the numeric keypad to type a zero followed by the ASCII Character Code.

| CHAR | ASCII CHAR CODE | CHAR | ASCII CHAR CODE | CHAR | ASCII CHAR CODE | CHAR | ASCII CHAR CODE |
|------|-----------------------|------|-----------------------|------|-----------------------|------|-----------------------|
| € | 128 | § | 167 | Å | 197 | ã | 227 |
| , | 130 | .. | 168 | Æ | 198 | ä | 228 |
| f | 131 | © | 169 | Ç | 199 | å | 229 |
| „ | 132 | ª | 170 | È | 200 | æ | 230 |
| ... | 133 | « | 171 | É | 201 | ç | 231 |
| † | 134 | ¬ | 172 | Ê | 202 | è | 232 |
| ‡ | 135 | > | 173 | Ë | 203 | é | 233 |
| ^ | 136 | ® | 174 | Ì | 204 | ê | 234 |
| % | 137 | - | 175 | Í | 205 | ë | 235 |
| Š | 138 | ° | 176 | Î | 206 | ì | 236 |
| < | 139 | ± | 177 | Ï | 207 | í | 237 |
| Œ | 140 | ² | 178 | Ð | 208 | î | 238 |
| ˆ | 145 | ³ | 179 | Ñ | 209 | ï | 239 |
| , | 146 | ´ | 180 | Ò | 210 | ð | 240 |
| “ | 147 | µ | 181 | Ó | 211 | ñ | 241 |
| ” | 148 | ¶ | 182 | Ô | 212 | ò | 242 |
| — | 150 | · | 183 | Õ | 213 | ó | 243 |
| — | 151 | ¸ | 184 | Ö | 214 | ô | 244 |
| ~ | 152 | ¹ | 185 | × | 215 | õ | 245 |
| ™ | 153 | º | 186 | Ø | 216 | ö | 246 |
| š | 154 | » | 187 | Ù | 217 | ÷ | 247 |
| > | 155 | ½ | 188 | Ú | 218 | ø | 248 |
| œ | 156 | ¼ | 189 | Û | 219 | ù | 249 |
| Ÿ | 159 | ¾ | 190 | Ü | 220 | ú | 250 |
| ¡ | 161 | ¿ | 191 | Ý | 221 | û | 251 |
| ¢ | 162 | À | 192 | Þ | 222 | ü | 252 |
| £ | 163 | Á | 193 | ß | 223 | ý | 253 |
| ¤ | 164 | Â | 194 | à | 224 | þ | 254 |
| ¥ | 165 | Ã | 195 | á | 225 | ÿ | 255 |
| ¦ | 166 | Ä | 196 | â | 226 | | |