

User Manual

For the IBM-PC/XT/AT, PS/2 and compatibles

PYRO!

The Entertaining Screen Saver



FIFTH GENERATION SYSTEMS

The Creators of FastBack

PYRO!

User Manual

Credits

Project Coordinator: Dariel LeBoeuf

Programming: Momentum Development Inc., Ashland, OR
PYRO! Fireworks module - original programming by
Kelvin G. Shields.

User Manual: Dayna Darby

Graphic Design: Dennis Garrett

Cover Art: Kevin Hebert

PYRO!™ is a trademark of Fifth Generation Systems, Inc. IBM, PC, XT, AT, PS/2, and PC-DOS are registered trademarks of International Business Machines, Inc. MS-DOS and Microsoft are registered trademarks of Microsoft, Inc. Logitech is a registered trademark of Logitech Inc. Hercules is a registered trademark of Hercules Computer Technology, Inc.

Dedicated to our most important asset
— our customers

Table of Contents

PART I GETTING STARTED

CHAPTER 1 / OVERVIEW	1-4
PYRO!	1-2
User Manual	2-4
CHAPTER 2 / INSTALLATION	5-14
Making a Working Copy	5-6
Checking the READ.ME File	6
Installing PYRO!	6-14

PART II USING PYRO!

CHAPTER 3 / PERSONALIZING PYRO!	15-19
Modules	15-16
Config	16-17
PYRO! On/Off	17
When to Sleep	17-18
When to Wake	18-19
CHAPTER 4 / ACTIVATING THE SLEEP MODE	21
Putting Your Screen to Sleep	21
Waking Your Screen	21-22
CHAPTER 5 MAKING PYRO! INACTIVE	23
Turning PYRO! Off	23
Removing PYRO!	23
Reinstalling PYRO!	23

PART III REFERENCE

CHAPTER 6 / PYRO! MENUS	25
Install	25
Configuration	25
Config Button	25
Sample Button	26
When to Sleep Button	26
When to Wake Button	26
Help	26

CHAPTER 7 / TROUBLESHOOTING	27-28
CHAPTER 8 / ERROR MESSAGES	29-34
GLOSSARY	35-38
INDEX	39
KEYSTROKE QUICK REFERENCE	41

Part I

Getting Started

PYRO!

PYRO! is a screen saving utility for PCs. PYRO! is designed to extend the life of your PC monitor by preventing damage caused by "burn-in." When a display remains constant for a long time on the monitor, the image can be permanently etched into the screen. This permanent etching is called "burn-in."

Anyone who relies on a PC monitor should take the necessary precautions to avoid burn-in damage. PYRO! is an easy and reliable way to save your screen. PYRO! prevents burn-in damage by replacing the display on your screen with one that is constantly moving or by blanking the screen.

Instead of leaving your word processing document on your monitor, let PYRO! put on one of its entertaining displays. PYRO! lets you choose from fascinating modules that save your screen - *Roving Picture*, *Clock*, *Message*, *Sleeper*, or the infamous *Fireworks*.

PYRO! is a must-have for anyone who values their PC monitor. PYRO! works automatically. You specify a "Sleep Delay" time that PYRO! waits before activating the sleep mode. When no keys have been pressed or when your mouse has not been moved or clicked for the amount of time you specify as Sleep Delay, PYRO! goes to work.

You can also activate sleep from any application. All you have to do is tell it when to "Sleep," display its screens, by pressing your Hot Key combination or moving your mouse to the Sleep Now corner of your screen. PYRO!'s modules remain on your screen until you tell it when to "Wake," return to the document or application from which you activated the sleep mode, by pressing any key or moving or clicking the mouse.

Not only does PYRO! prevent burn-in, it also protects your screen from unauthorized waking. PYRO! gives you the option of defining a password. When a password is defined,

no one can wake your screen without the correct password; your data is safe beneath the display until the correct password is typed.

Program Requirements

- IBM PC, XT, AT, PS/2 or compatible
- DOS 2.0 to 4.01
- 5K RAM (for resident module), 256K RAM for setup program
- CGA, EGA, VGA, MCGA, MDA or Hercules video adapters
- Logitech or Microsoft compatible mouse - Optional

User Manual

This manual is divided into three parts: **GETTING STARTED**, **PERSONALIZING PYRO!**, and **REFERENCE**.

GETTING STARTED gives you an overview of the PYRO! program and manual. It also gets you started using PYRO! by taking you step-by-step through the installation procedures. The installation instructions get you started using PYRO!; however, for more detailed instructions about personalizing PYRO!, read **CHAPTER 3**. Once PYRO! is installed, you're ready to use it. You define all the conditions in which PYRO! sleeps and wakes during installation.

USING PYRO! provides more detailed instructions on changing any conditions you set during installation so that PYRO! satisfies all your needs as they change. You do not need to read this section unless you want to modify PYRO!

The **REFERENCE** section includes a description of each menu. If you consider yourself an experienced user, this section may help you find what you need without detailed explanations. The **REFERENCE** section also includes a **TROUBLESHOOTING** chapter that presents some problems you may encounter and offers helpful solutions. A

listing of **ERROR MESSAGES** is also included in this chapter.

A **GLOSSARY** and **QUICK KEYSTROKE REFERENCE** are located at the end of the manual. The **GLOSSARY** defines the terminology used in the manual and program, and the **KEYSTROKE REFERENCE** is a listing of the keystrokes required by PYRO!. An **INDEX** is located at the end of the manual.

About the Terminology in This Manual

In this manual the procedures instruct you to "select" buttons or conditions. Buttons are those items enclosed in brackets, <>. For example <Sample>, <OK>, <When to Wake>, etc. are all buttons. Conditions refer to the list of modules in the scrollable window like *FIREWORK.PYR*, *CLOCK.PYR* and the list of wake conditions like *Any key pressed*, *Mouse clicked*, etc.

PYRO! can be controlled from the keyboard or with a mouse. On the following page is a description of the keyboard and mouse methods for using PYRO!.

KEYBOARD

Select position the cursor on the button or condition so that the item is highlighted. Once the item is highlighted, press enter.

To "select" from any menu, press ALT and the highlighted letter in the menu's title. The pull-down menu appears. Press the key of the highlighted letter for the option you want. Example, ALT+I+I for Install.

Highlight means to position the cursor on the item so that it is highlighted (do not press the enter key to highlight something).

Enter means to type something (like password, path, Hot Key combination) then press enter.

TAB key moves the cursor to the buttons.

Arrow keys move the cursor up/down lists or conditions (ie the list of modules in the configure setup screen, and the list of When to Wake conditions.)

* When the OK button appears at any prompt, (not screen) you can press enter instead of selecting OK. If the instructions say to "select OK," you must position the cursor on the OK button then press enter.

MOUSE

Select single-click on that button or condition.

Highlight means to click on the name not in the check box. (ie When highlighting modules to sample, single-click on the name then select Sample. Clicking in the check box makes the module active.)

Chapter 2 / Installation

In this chapter, you will learn to make a working copy of the original PYRO! diskette, check the READ.ME file, and install PYRO! on your hard drive or on a floppy disk.

For your convenience, Fifth Generation Systems does not copy protect software. Before using PYRO!, make a copy of the original floppy.

Please do not make illegal copies of this software. The software you are using was produced through the efforts of many people: designers, artists, programmers, distributors, retailers and other dedicated workers. The costs of developing this and other software programs are recovered through software sales. The unauthorized duplication of personal computer software raises the cost to all legitimate users. This software is protected by federal copyright law. Copying software for any reason other than to make a backup is a violation of law. Individuals who make unauthorized copies of software may be subject to civil and criminal penalties.

As a member of the Software Publishers Association (SPA), Fifth Generation Systems supports the industry's effort to fight the illegal copying of personal computer software. Report copyright violations to:

SPA
1101 Connecticut Avenue, NW, Suite 901
Washington, DC 20036

Making a Working Copy

- 1 Insert the original PYRO! disk in Drive A. Have a blank diskette ready.

Be sure the floppies are of the same media (if you use the 5 1/4" 360K floppy use a 360K floppy for the copy, or use a 720K if you use the 3 1/2" 720K floppy).

2 At the A> prompt, type

DISKCOPY A: A:

Follow the DOS prompts to change diskettes when necessary.

Store your original PYRO! floppy in a safe place and use your working copy of PYRO!.

Checking the READ.ME File

Before using PYRO! be sure to check the READ.ME file. It may contain important information about PYRO! that is not included in the manual.

Insert your copy of PYRO! in Drive A. To view the READ.ME file on your screen, type at the A> prompt,

A> TYPE A:READ.ME : MORE

To print the READ.ME file for ready reference, type at the A> prompt,

A> COPY A:READ.ME PRN

Installing PYRO!

The following instructions take you step-by-step through the installation procedures. These instructions get you started using PYRO!. For explanation about the terminology used in these instructions, see **CHAPTER 1, About the Terminology in This Manual**. For more information about further personalizing PYRO!, see **CHAPTER 3 PERSONALIZING PYRO!**

NOTE: The installation program adds the following lines to your AUTOEXEC.BAT file:

**SET PYRO=C:\PYRO
C:\PYRO\PYRO**

If you do not want your AUTOEXEC.BAT file modified, you should:

- Make a directory on your hard drive for the PYRO! files.
- Copy the files from the working diskette to that directory.
- Add the following lines to your AUTOEXEC.BAT file if you want PYRO! to be loaded each time you start your computer or run separately when you want to load PYRO!:

**SET PYRO=C:\PYRO
C:\PYRO\PYRO**

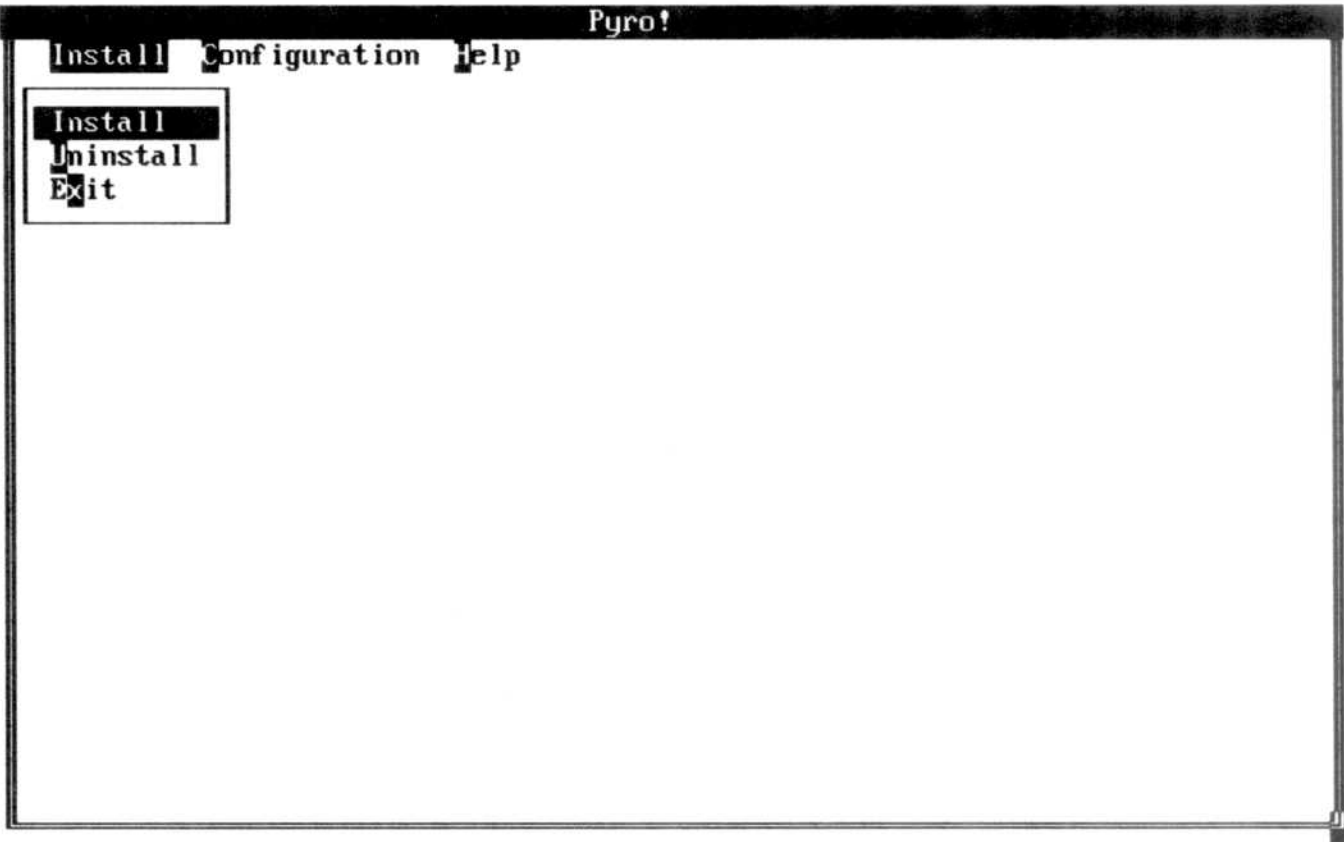
(NOTE: If you copy the files in a different directory, substitute the full path in place of PYRO directory name.)

- Run **PSETUP** and use **CONFIGURATION** menu to customize PYRO!

- 1 Insert your PYRO! working diskette into Drive A.

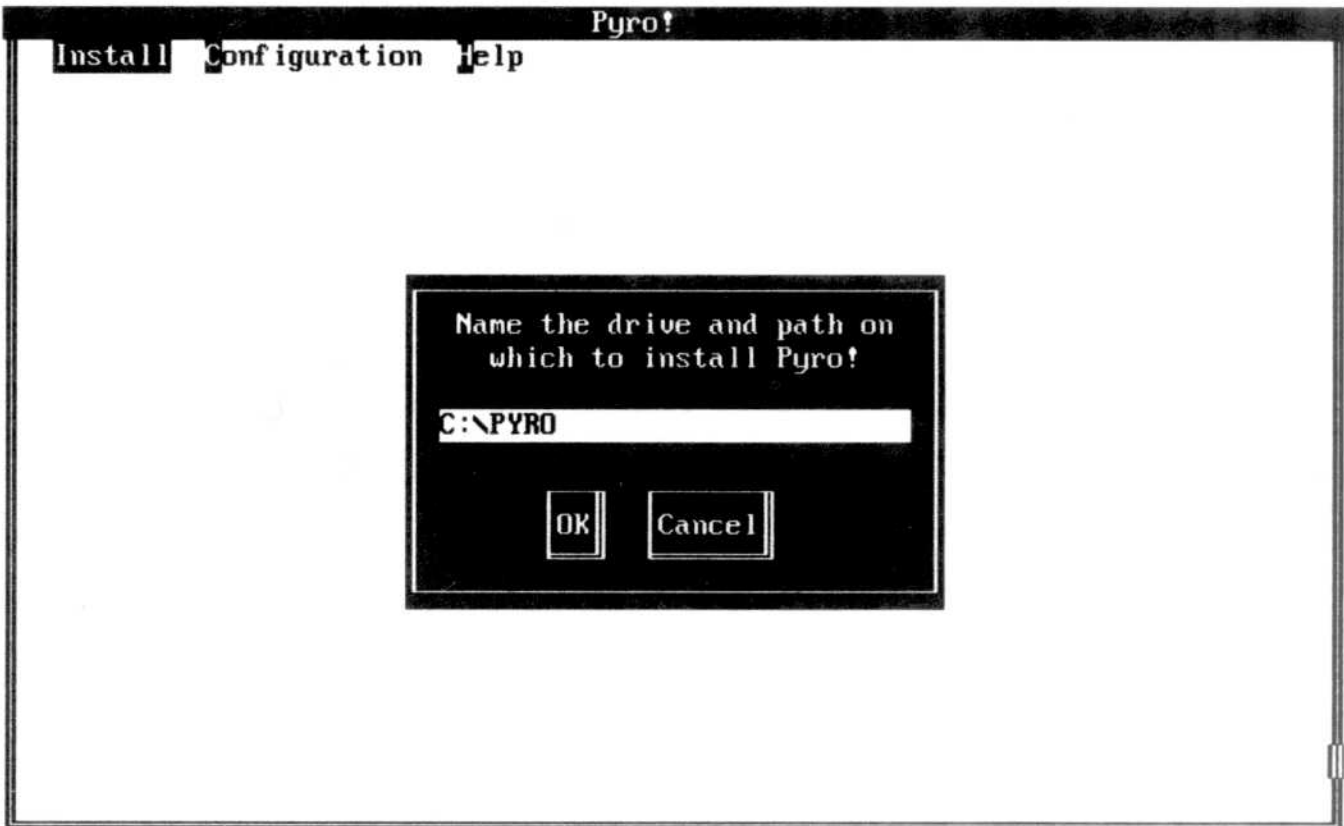
A> PSETUP 

- 2 Select **Install** from the **INSTALL** menu.



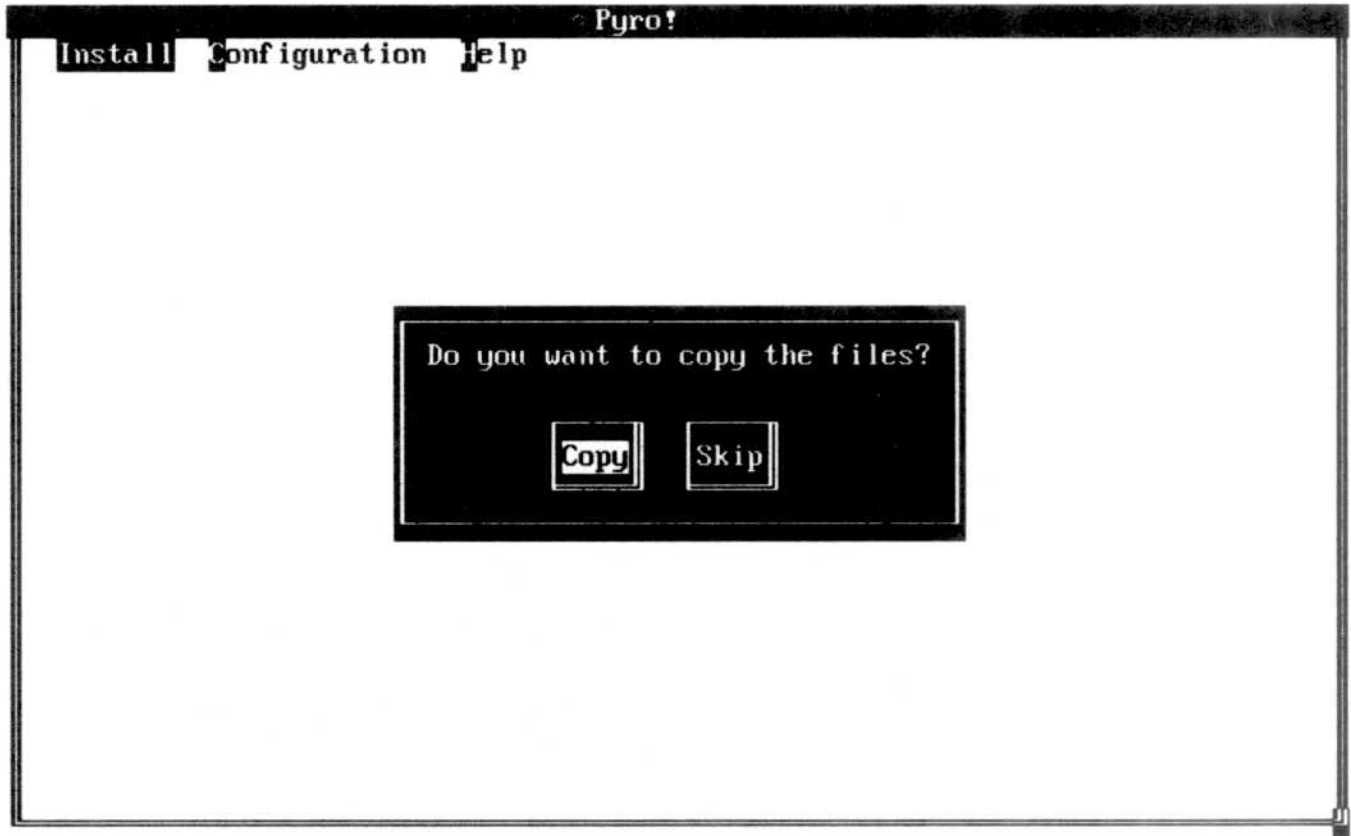
Install Menu

- 3 Verify the drive and path to which PYRO! is being installed. The default setting is C:\PYRO. Type the new path to change the default.



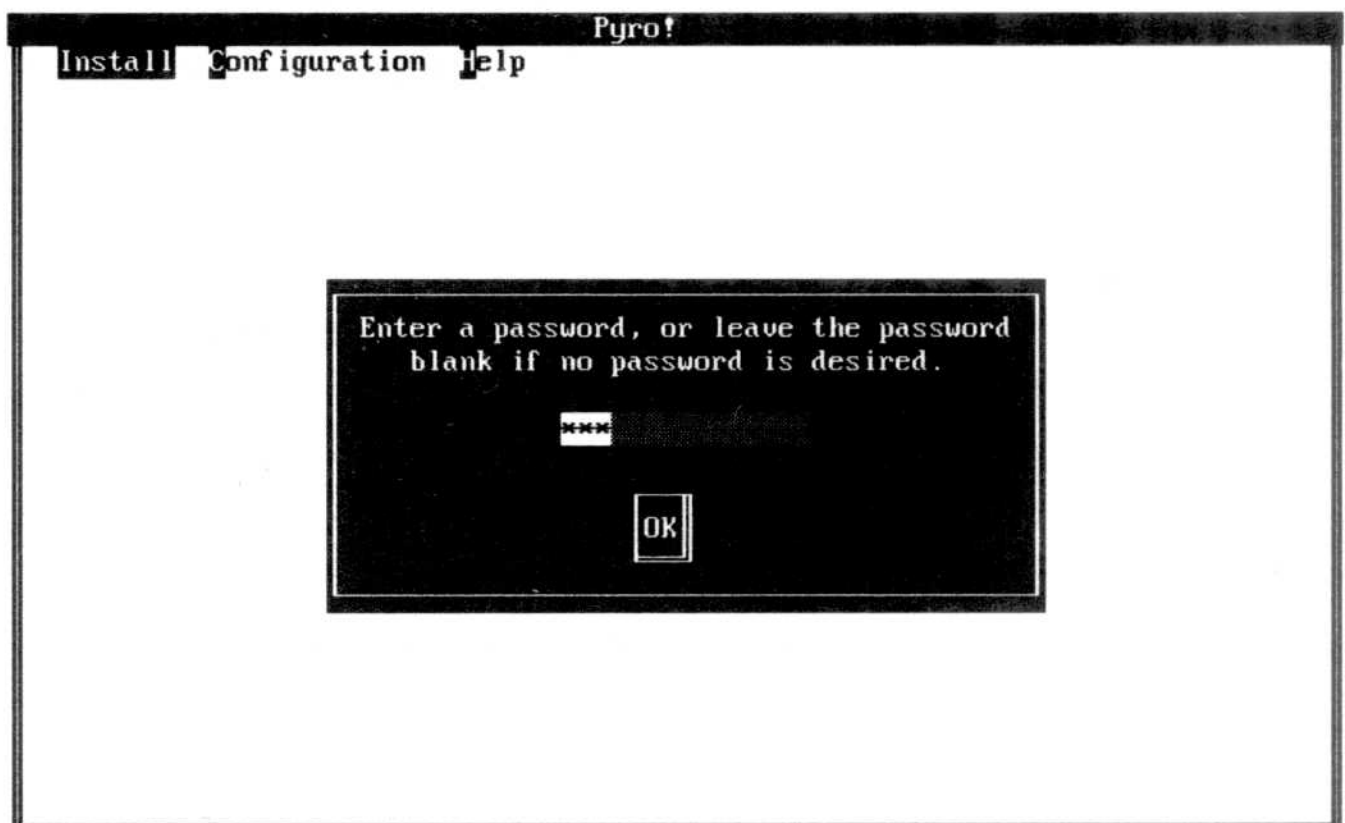
Path Prompt

- 4 PYRO! asks if you want to **Copy** the files or **Skip**. Select **Copy** if you are installing PYRO! from the floppy and the files are not on your hard drive or **Skip** if the PYRO! files are on your hard drive.



Copy Prompt

- 5 Verify the drive from which PYRO! is being installed.
- 6 To use a password, enter it in the "Enter password" prompt.

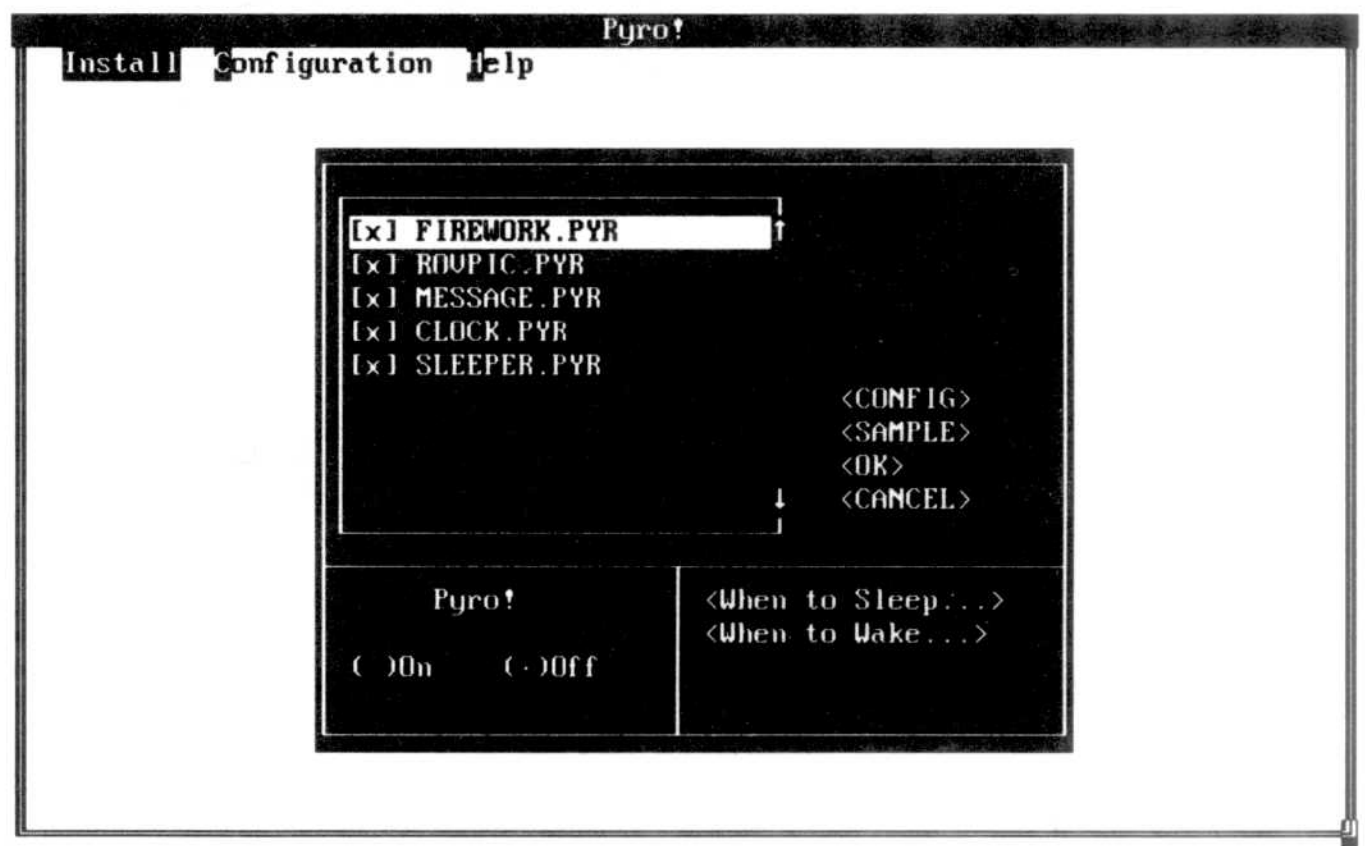


Password Prompt

Your password can be 3-15 characters. Use white keys for the password. White keys are the alphanumeric white keys in the center of your keyboard. The function keys, Space bar and ESC key are not white keys.

It is important that you remember your password. If a password is not assigned now, you must reinstall PYRO! to add one later.

- 7 At configuration setup screen, define the conditions in which to activate the sleep mode and wake your screen.



Configuration Setup

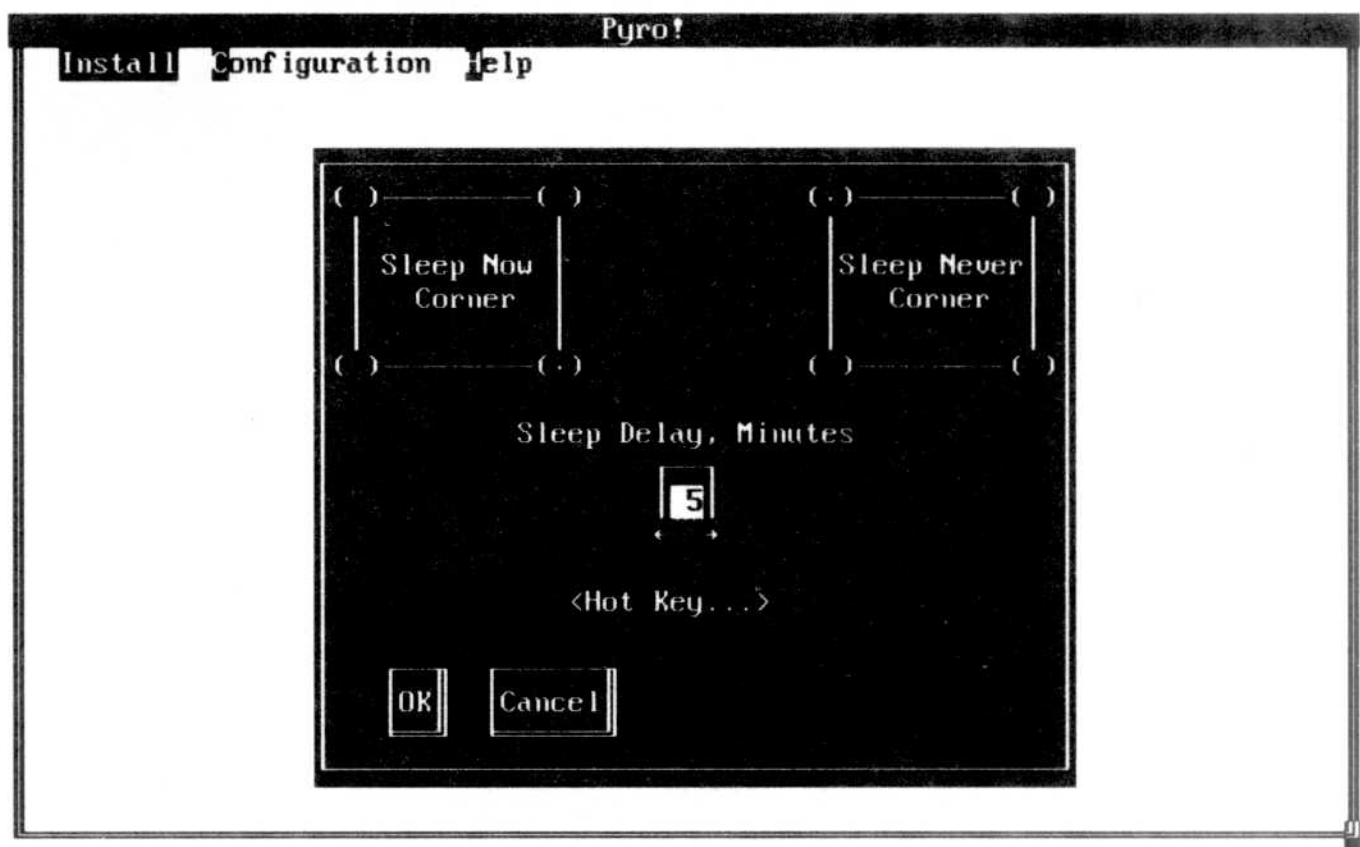
The first box is a scrollable list of modules (PYRO!'s display screens). An x in the check box indicates the module is active (available for display). To select or deselect the modules, highlight it and press enter. Or, click in its check box.

To view a sample of what each module looks like, highlight it (if using a mouse, click on the module's name - not in the check box) then select **<Sample>**. Press any key, click or move the mouse when you're done viewing it. Repeat for each module.

-
- 8 In the **PYRO! ON** box, **On** should be selected for PYRO! to be operational.

NOTE: If you wish to accept PYRO!'s default settings for When to Sleep and When to Wake, skip to #12.

- 9 Select **<When to Sleep>**.

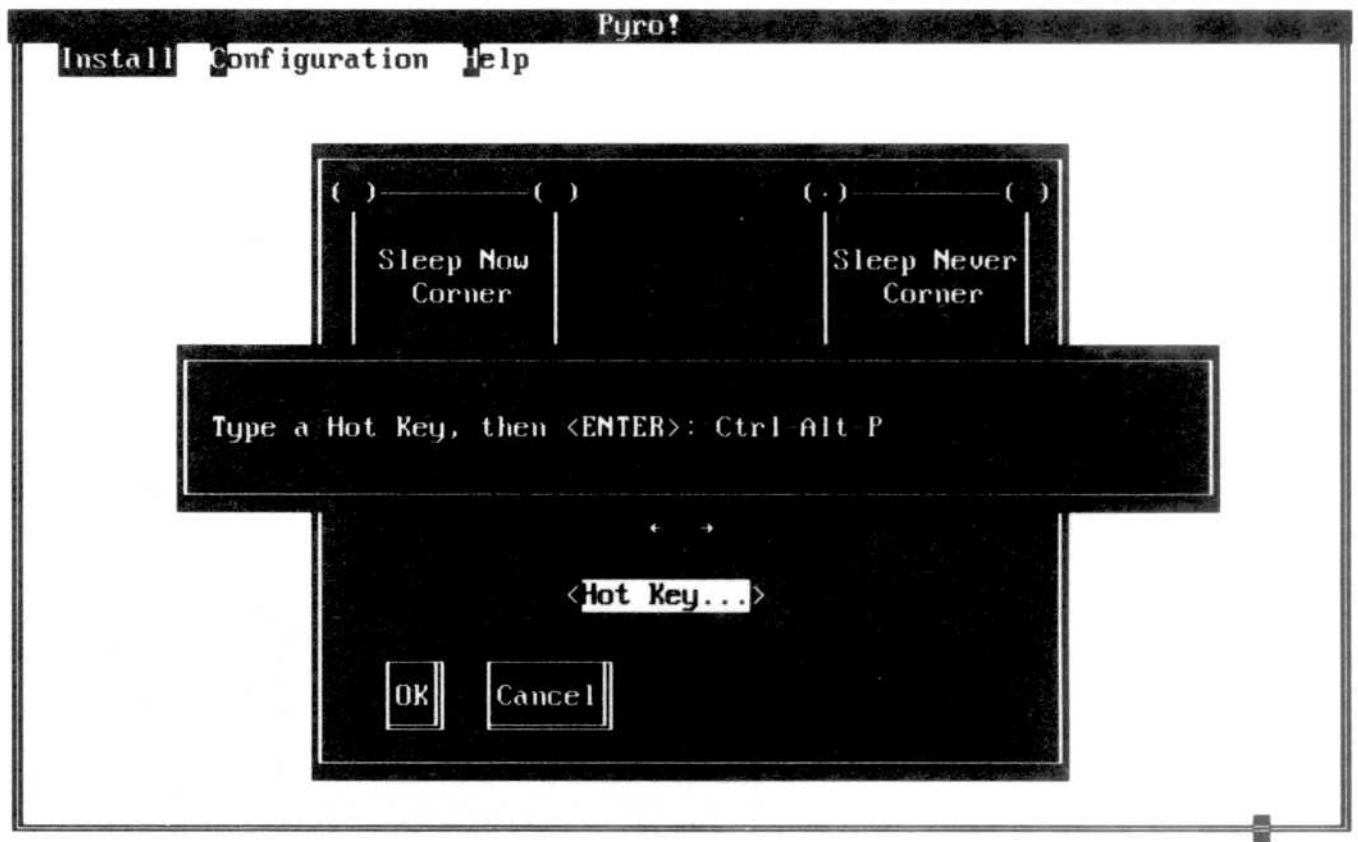


When to Sleep

The **Sleep Now/Never Corners** activate/deactivate the sleep mode when the mouse is positioned in the corner selected. Select the desired corner. To deactivate **Sleep Now** and **Sleep Never**, select the same corner for each.

Sleep Delay automatically activates a PYRO! module after your keyboard or mouse has remained idle. Enter 1-59 minutes, or 0 to deactivate the automatic sleep.

Hot Key activates the sleep mode when the Hot Key combination is pressed. Select **<Hot Key>**. Press the keys for your combination (recommended combinations listed on page 12) then press enter. (To use the default CTRL+ALT+P, press enter).



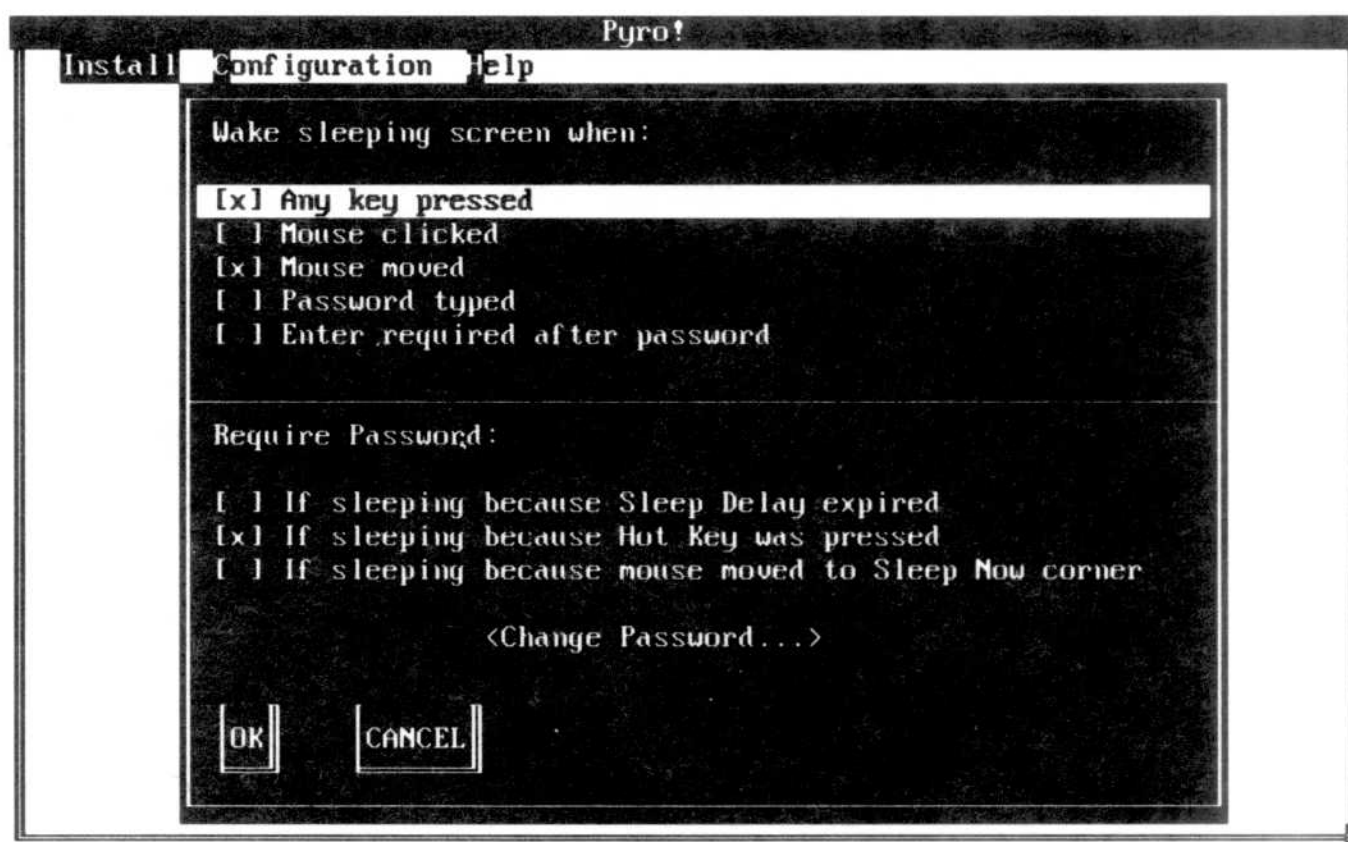
Hot Key

It is important to remember your Hot Key combination.

NOTE: Avoid using keys that will conflict with other applications. We recommend using one of the following as the combination:

- * CTRL+ALT+white key
- * CTRL+white key
- * ALT+white key

- 10 After selecting the Sleep corners, Sleep Delay, and Hot Key, select **OK**.
- 11 Select **<When to Wake>**.



When to Wake

The conditions which wake your screen from a PYRO! display are listed in the top part of the When to Wake screen. The bottom part of the screen applies only if a password is assigned. After selecting the When to Wake conditions, select **OK** to return to the configure setup screen.

- 12 From the configure screen, select **<OK>**. Select **Exit** from the **INSTALL** menu, then remove the floppy from the floppy drive and reboot your computer.

PYRO! is ready to go. When you want to put your screen to sleep (activate a display module), press your Hot Key combination. Or, if you're using a mouse, position the mouse in the Sleep Now corner you selected. PYRO! puts on its show. The display remains, protecting your screen, until you press any key or click or move the mouse (depending on the When to Wake conditions you set).

If you defined a password and selected any Require Password condition, type your password to wake your screen. PYRO! does not display your password when it is used to wake the screen. If the wrong password is entered, PYRO! continues its display.

When the Sleep Delay time is up, PYRO! automatically activates a display module. The display remains on your screen until you press any key, click or move the mouse (depending on the When to Wake conditions you set).

That's all there is to it. If you want to change any of the PYRO! conditions you set, see **CHAPTER 3, PERSONALIZING PYRO!**

Part II

Using Pyro!

Chapter 3 / Personalizing Pyro!

In this chapter, you will learn how to change any of the settings/conditions used during installation. The only option you cannot change now that PYRO! is installed is adding a password. If a password was not defined during installation, you must reinstall PYRO! to assign one.

Load the PYRO! setup program by typing at the C> prompt,

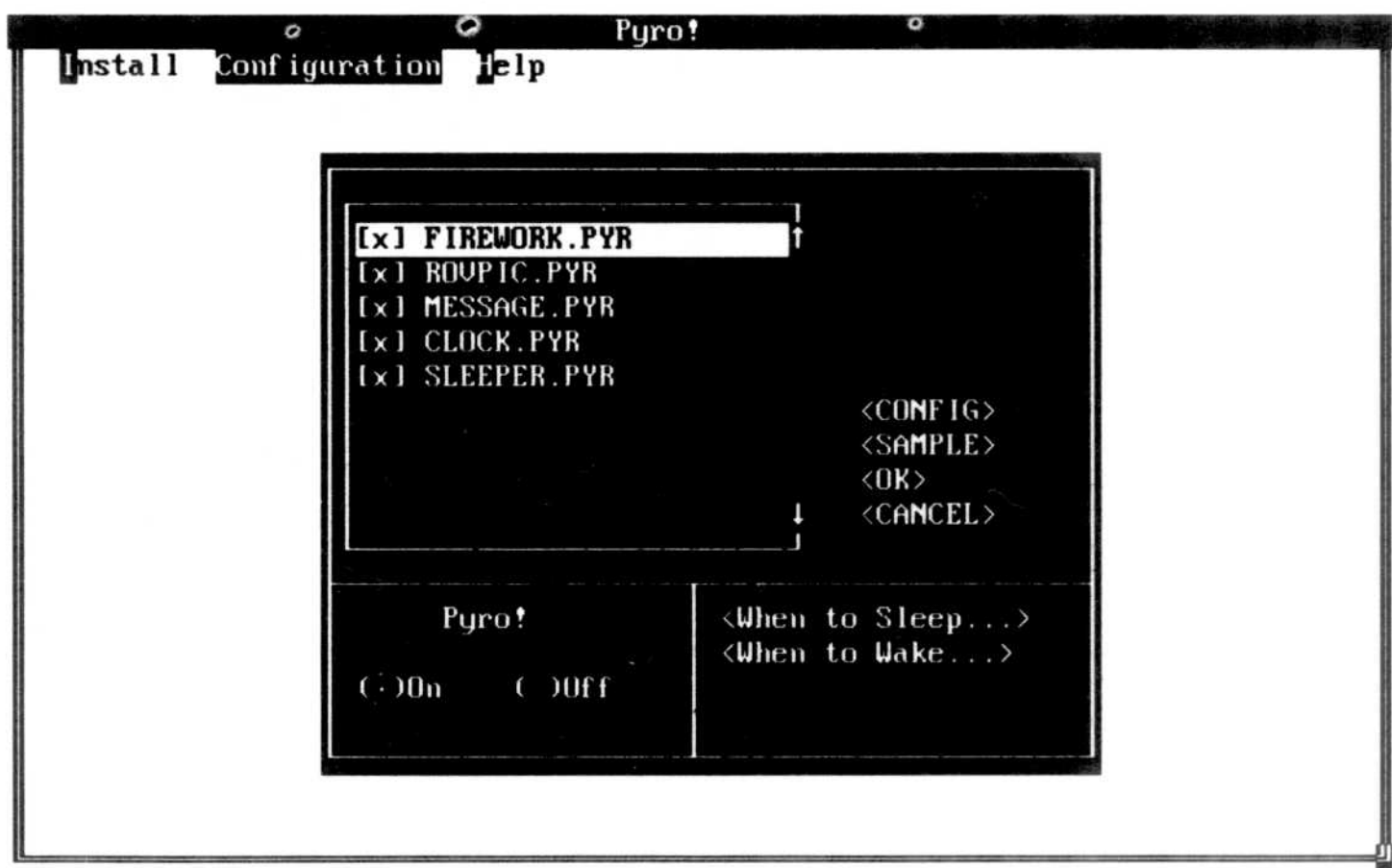
```
C> \PYRO\SETUP 
```

(Or, enter the path you copied the PYRO! files to)

Select **Configure PYRO!** from the **CONFIGURATION** menu.

Modules

The scrollable box on the left side of the configure screen lists the modules PYRO! uses to protect your screen. Modules must be active in order for PYRO! to display them. An x in the check box indicates a module is active. If no modules are active, PYRO! blanks your screen.



Configure Screen

Select one or all of the modules to make them active. PYRO! displays them in the order they are listed. The first time you put your screen to sleep, the first active module is displayed; the second time sleep is activated, the second active module is displayed, etc. To deselect any module, highlight it then press enter or single-click in the check box.

To view a module, highlight it then select **<Sample>**.

Config

The **<Config>** button allows you to personalize each module.

Fireworks

The Fireworks module displays fireworks. It can be configured to make the sound of exploding fireworks. Highlight **FIREWORK.PYR** then select **<Config>**. At the prompt, select to turn the sound **On**. For no sound, select **Off**.

Roving Picture

The Roving Picture module displays a picture inside a box that constantly moves on your screen. It can be configured to display most .PCX files you have. To change the picture, highlight **ROVPIC.PYR** then select **<Config>**. To use your .PCX file, enter the complete path and filename of the .PCX file then select **OK**. To use PYRO!'s picture, select **OK**. (PYRO! defaults to the last .PCX file entered)

Message

The Message module displays a statement that moves around your screen. You can display your own message of up to 40 characters. Highlight **MESSAGE.PYR** then select **<Config>**. To use PYRO!'s picture, select **OK** or type in your message then select **OK**.

Clock

The Clock module displays the current time and constantly moves on your screen. The format of the time can be changed. Highlight **CLOCK.PYR** then select **<Config>**. The prompt asks you to select 12 or 24 hour format. Select the one you want then select **OK**.

Sleeper

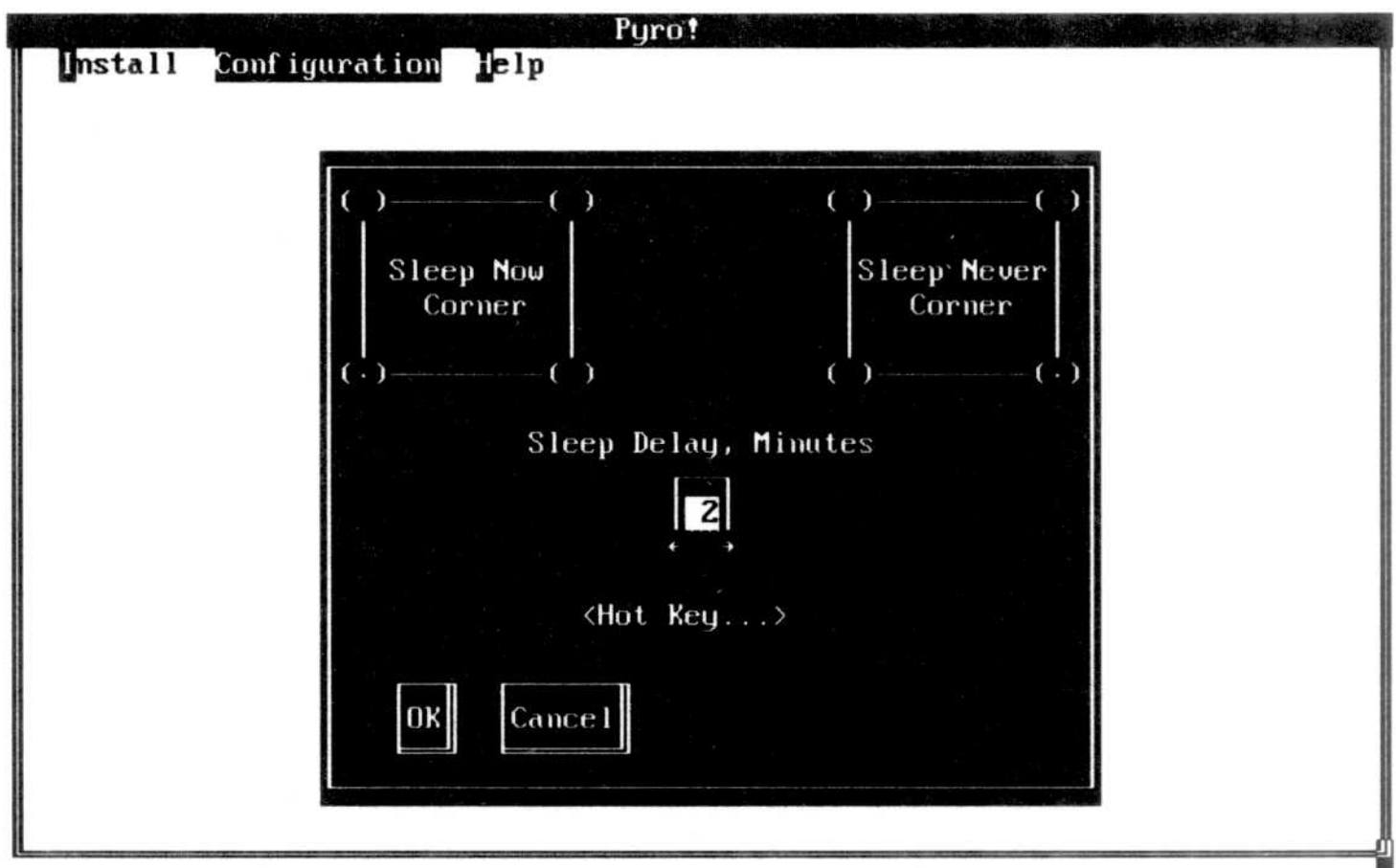
The Sleeper module displays a 3-D graphic. Highlight **SLEEPER.PYR** then select **<Config>**. Select fast, slow, or moderate as the speed Sleeper draws its lines, then select **OK**.

PYRO! On/Off

The box located at the bottom left of the screen turns PYRO! **On** or **Off**. Select **On** for PYRO! to be operational or **Off** if you do not want to use PYRO!. **Off** does not remove PYRO! from memory but deactivates it so sleep is never activated.

When to Sleep

<When to Sleep> lets you define the conditions which activate the sleep mode. Select **<When to Sleep>**. If you are not using a mouse the Sleep Corners are not available; go to **Sleep Delay**.



When to Sleep

Sleep Now Corner

When your mouse is positioned in the corner you select, a PYRO! module is activated (the display begins approximately 1/2 second after the mouse is positioned here). Select the desired corner.

Sleep Never Corner

When your mouse is positioned in this corner, a PYRO! module is NOT activated. Select the desired corner. To deactivate Sleep Now and Sleep Never, select the same corner for each.

Sleep Delay

Sleep Delay is the amount of time your computer remains idle before PYRO! automatically activates the sleep mode. Your computer is idle when no keys are pressed, or the mouse is not clicked or moved. Enter from 1-59 minutes, or 0 to deactivate automatic sleep, in the Sleep Delay box (or, click the mouse on the arrows until the desired time shows.)

CAUTION If you're using another application that has an automatic screen saver, set the PYRO! Sleep Delay ahead. (Example, other application activates sleep or blanks out after 15 minutes, PYRO! should be set to sleep after 10 minutes.)

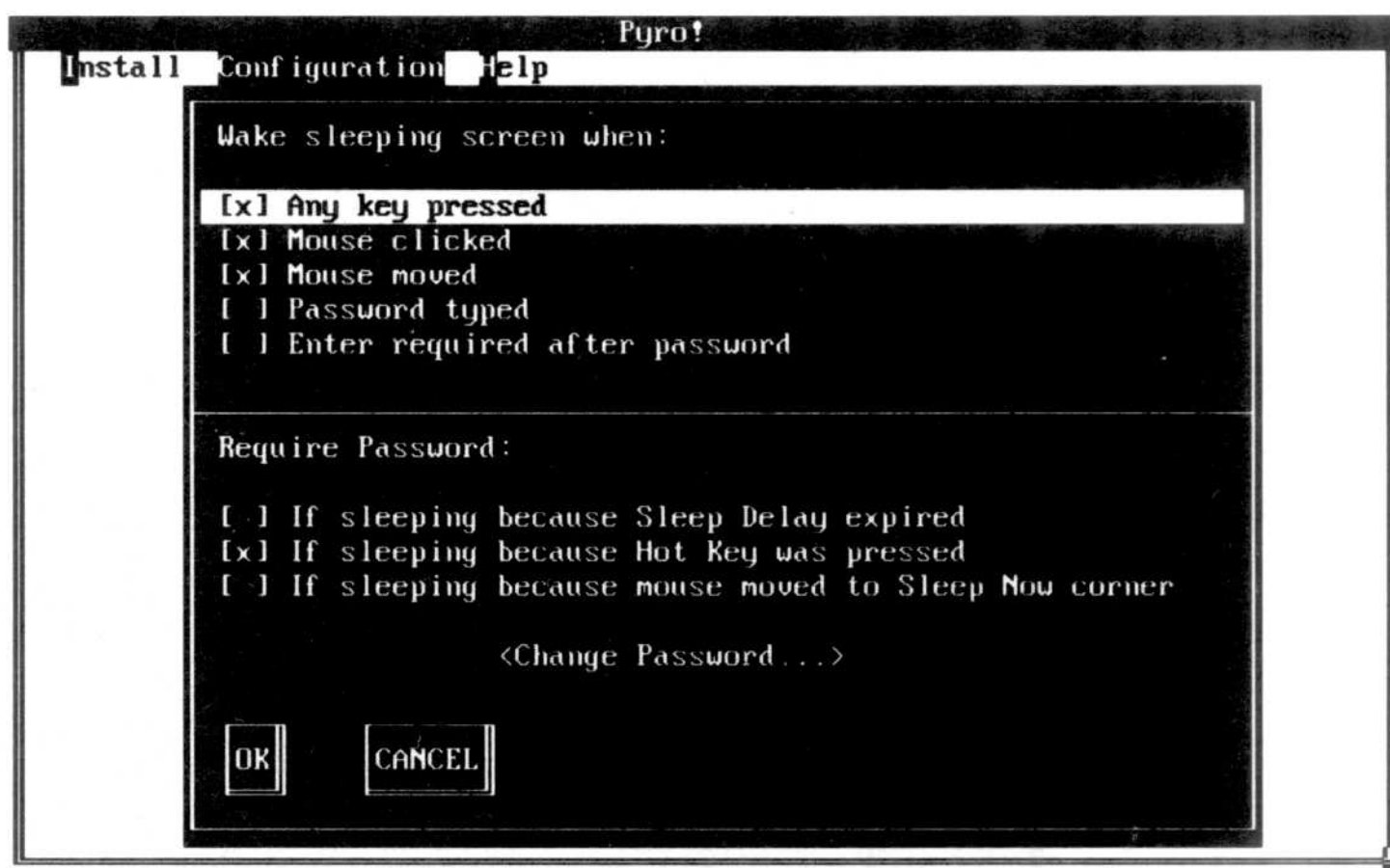
Hot Key

The Hot Key is actually a two or three character combination that allows you to activate PYRO!'s sleep mode. Select **<Hot Key>**. At the prompt, use the CTRL+ALT+white key, CTRL+white key, or ALT+white key. **It is important that you remember your Hot Key combination.**

Select **OK** to exit the When to Sleep screen.

When to Wake

<When to Wake> lets you define the conditions which stop the sleep mode (module from displaying) and return your original screen. Select **<When to Wake>**.



When to Wake

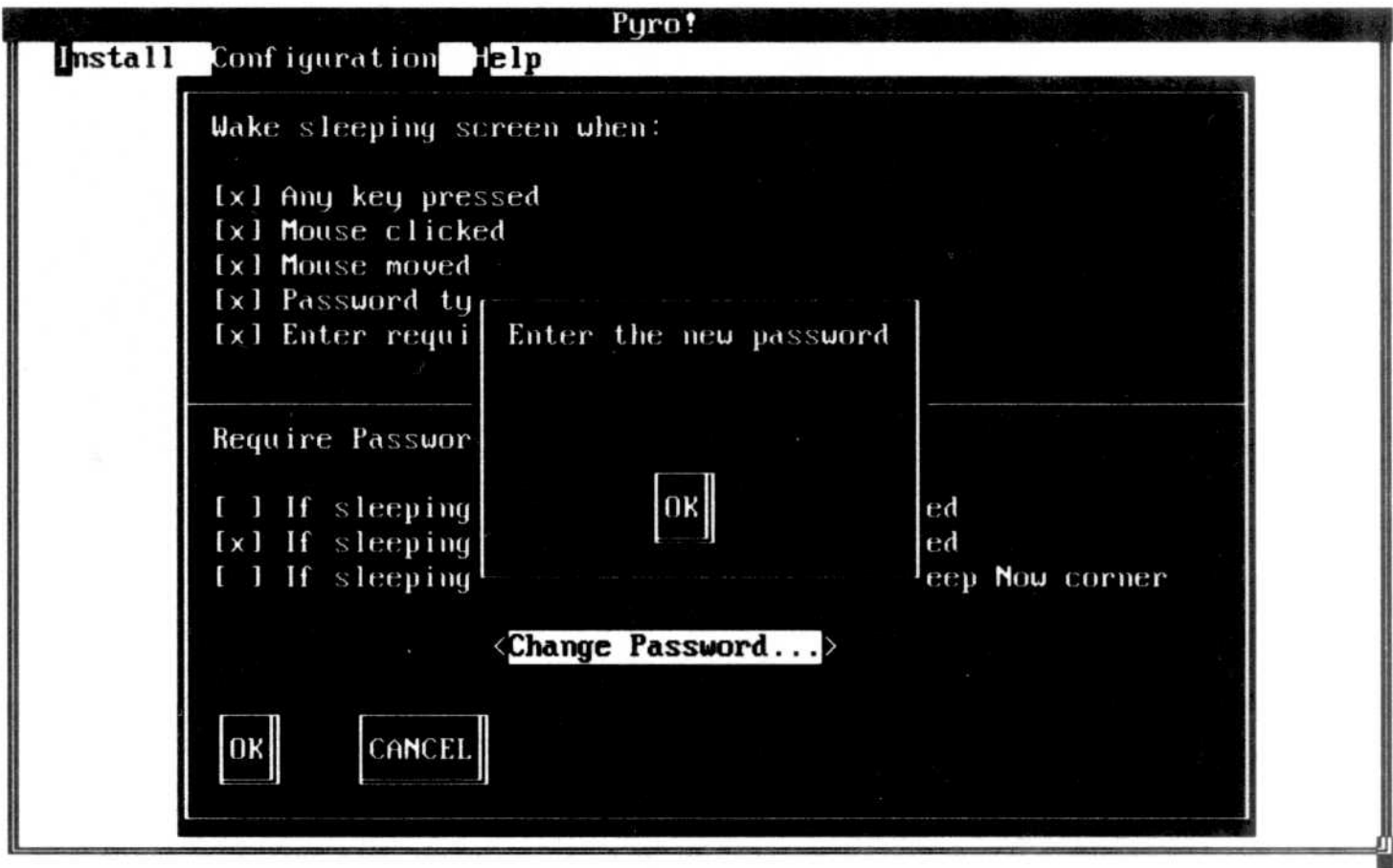
The top part of the screen lists the conditions which stop PYRO!'s module from displaying. Select the conditions you want to wake your screen. *NOTE: Enter required after password* can only be selected if *Password typed* is selected.

The second part of the screen applies only if a password was defined. The Require Password conditions specify the occasions in which typing the password wakes the screen. Select the desired conditions. You must select *Password typed* and any Require Password conditions.

Change Password

If you did not assign a password, skip this step. **<Change Password>** allows you to change your current password. The password option allows you to protect your system from access. When a password is assigned and depending on the When to Wake conditions set, PYRO! stops its display when the correct password is typed. If the wrong password is entered, PYRO! continues displaying the module.

Select **<Change Password>**. Enter your old password then your new one and confirm it. PYRO! accepts 3-15 characters (white keys) as the password. **It is important to remember the password you choose.** After entering your password, select **OK**.



Change Password

Select **OK** to exit the When to Wake screen.

At the configure screen, select **<OK>**. Select **Exit** from the **INSTALL** menu to exit the program.

Chapter 4 / Activating The Sleep Mode

In this chapter you will learn how to put your screen to sleep and to wake it from sleep. When your screen is in the sleep mode, PYRO! replaces the original screen with a module. The module is a moving image that prevents burn-in.

The module remains on your screen until you perform any action you selected as a wake condition, like pressing a key, clicking the mouse, typing your password, etc. Waking your screen means to return to the original screen, the document or application from which you activated the sleep mode (stop the module from displaying).

Putting Your Screen to Sleep

To activate the sleep mode, press your Hot Key combination. Or, if you are using a mouse, position the mouse in the corner of your screen selected as the Sleep Now Corner. A module is displayed on your screen.

Depending on the Sleep Delay time you set, PYRO! automatically activates the sleep mode. When your computer has remained idle (no keys pressed, mouse has not been clicked or moved) for the time you specify, PYRO! replaces your current screen with one of its modules. The module remains on your screen until you perform a Wake condition (press a key, click mouse, type password, etc.)

Waking Your Screen

Waking your screen means to stop PYRO!'s module from displaying and return to the original screen. You can wake the screen by performing any action you selected as a When to Wake condition. For instance, if you selected *Any key pressed* or *Mouse clicked*, perform one of these actions to return to your original screen.

If you defined a password, and depending on the Require Password options you selected, type your password. For instance, if you selected *If sleeping because Hot Key was*

pressed (as a Require Password condition) you must type your password if you used the Hot Key combination to activate sleep in order to wake your screen.

Chapter 5 / Making Pyro! Inactive

In this chapter you will learn to turn PYRO! off, remove it from your hard drive, and reinstall it.

Turning PYRO! Off

When PYRO! is turned off, it remains in memory but sleep is never activated.

- 1 Run **PSETUP** program by typing,

C> \PYRO\PSETUP

- 2 Select **Configure PYRO!** from **CONFIGURATION** menu.
- 3 Select **Off** from the **PYRO! ON** box.
- 4 Select **OK**.
- 5 Exit **PSETUP** (ALT+I+X).

Removing PYRO!

To remove PYRO! from your hard drive, you must uninstall it using PSETUP (Alt+I+U), erase the files in the PYRO! directory, then remove the PYRO! directory. See your DOS guide for further instructions on erasing files and removing directories.

Once PYRO! is removed from your hard drive, you must reinstall it with the floppy should you decide you want it on your hard drive.

Reinstalling PYRO!

If you have uninstalled PYRO! but have not removed the files from you hard drive, you can reinstall it by calling up the PYRO! setup screen (**PSETUP**). Go through the installation procedure but select **Skip** since the files are on your hard drive. Reboot your computer as PYRO! instructs.

Part III

Reference

Chapter 6 / Pyro! Menus

This chapter briefly describes the functions of the PYRO! menus. The menus are listed in order as they appear on the PYRO! setup screen. If you are not very experienced with your PC, this chapter may be more helpful to you after you have read **PART II USING PYRO!**.

INSTALL

Allows you to install and exit the program.

Install

Copies PYRO! from the floppy to your hard drive (when you choose to **Copy**; or if files are on your hard drive, choose **Skip**). During installation you have the option of defining a password. If a password is not defined at this time, PYRO! has to be reinstalled to add one. Installation procedure also allows you to choose modules to be active, and configure the conditions which activate the Sleep mode and conditions that Wake your screen.

Uninstall

Makes PYRO! inoperable. **Uninstall** removes **SET PYRO=C:\PYRO** and **C:\PYRO\PYRO** from your AUTOEXEC.BAT file.

Exit

Allows you to leave the INSTALL or PSETUP programs.

CONFIGURATION

Allows you to change any Sleep or Wake conditions selected during installation.

Configure PYRO!

Allows you to change the status of the active modules, sample a module, change the password, Sleep Delay, Hot Key, Sleep Corners, and When to Wake / Sleep conditions.

<Config> Button

Allows you to personalize each module. The Fireworks module can be configured to make sounds; the Roving

Picture module can display most .PCX files; the Message module can display any message you want up to 40 characters; the Clock module can display time in 12 or 24 hour format; and the Sleeper can move around the screen at fast, slow, or moderate speeds.

<Sample> Button

Allows you to view a module.

<When to Sleep> Button

Allows you to set the conditions which activate the sleep mode. The conditions include setting the Sleep Now and Never Corners (if using a mouse), Sleep Delay, and Hot Key.

<When to Wake> Button

Allows you to set the conditions which stop the sleep mode, and return your original screen.

The When to Wake a Sleeping Screen conditions:

- Any key pressed
- Mouse moved
- Password typed
- Enter required after password (if Password typed is selected)

The Require Password conditions:

- If sleeping because Sleep Delay expired
- If sleeping because Hot Key was pressed
- If sleeping because mouse moved to Sleep Now Corner

HELP

Provides version number and information for PYRO!

Chapter 7 / Troubleshooting

This chapter describes solutions for questions and problems you may have when using PYRO! For further assistance, contact Fifth Generation Systems, Technical Support at the number listed on the back cover of the manual.

AFTER INSTALLING PYRO! I GET AN "OUT OF ENVIRONMENT SPACE" MESSAGE

Make sure you install PYRO! using PSETUP.EXE. If you receive the **OUT OF ENVIRONMENT SPACE** message, when you reboot, you will need to add the following statement to your CONFIG.SYS file to increase the amount of environment space:

SHELL = C:\COMMAND.COM /P /E:size

where **size** is the number of bytes the environment uses. The default is 160 bytes so keep increasing this value until the **OUT OF ENVIRONMENT SPACE** message no longer displays.

I CANNOT INSTALL PYRO! WITH MY WORKING DISK

The best way to make a working diskette is to use the DOS DISKCOPY command; otherwise the volume label will be incorrect. Use DOS LABEL command to correct the diskette's volume label.

I GET "NO DISPLAY MODULES FOUND IN CURRENT DIRECTORY" MESSAGE

This message will be displayed by PSETUP.EXE when the environment variable is set incorrectly. Add the following line to your CONFIG.SYS file:

SHELL = C:\COMMAND.COM /P /E:size

where **size** is the number of bytes the environment uses. The default is 160 bytes so keep increasing this value until the **OUT OF ENVIRONMENT SPACE** message no longer displays.

**I INSTALLED PYRO! AND REBOOTED, BUT IT DOES NOT
BLANK MY SCREEN IN THE APPROPRIATE AMOUNT OF
TIME** or
MY HOTKEY DOES NOT WORK

You are probably using a menuing software or calling a batch file that never returns. When PYRO! installs itself it modifies the last line of your AUTOEXEC.BAT which means it probably installed itself after your menuing software or batch file is executed; therefore, PYRO.EXE never gets loaded. Edit the AUTOEXEC.BAT file so that your menuing software or batch file is the last item in the list.

**MOVING THE MOUSE SOMETIMES CAUSES THE SCREEN
TO GO TO SLEEP**

Even at the DOS prompt, moving the mouse toward the Sleep Now Corner causes PYRO! to sleep.

**MY SOFTWARE APPLICATION WON'T LOAD AFTER IN-
STALLING PYRO!; I RECEIVE "INSUFFICIENT MEMORY"
MESSAGE**

PYRO! requires about 5K of RAM to run. Remove unimportant memory resident programs and device drivers, read your applications documentation on running in low memory conditions and/or have qualified personnel add more RAM memory to your computer.

**WHEN REBOOTING, I GET "ERROR OPENING PYRO.CFG,
PYRO! NOT INSTALLED" MESSAGE**

Make sure you install PYRO! using PSETUP.EXE. If you receive the **OUT OF ENVIRONMENT SPACE** message, when you reboot, you will need to add the following statement to your CONFIG.SYS file to increase the amount of environment space:

SHELL = C:\COMMAND.COM /P /E:size

where **size** is the number of bytes that the environment uses. The default is 160 bytes so keep increasing this value until the **OUT OF ENVIRONMENT SPACE** message no longer displays.

Chapter 8 / Error Messages

This chapter provides a listing of error messages you may encounter while using PYRO! as well as an explanation of what each means. For further assistance, contact Fifth Generation Systems, Technical Support (number listed on back cover).

PSETUP ERROR MESSAGES

CANNOT UPDATE FILES LARGER THAN 60K

This message will only occur if the AUTOEXEC.BAT file is larger than 60K. Add the following lines to your AUTOEXEC.BAT file using a text editor:

```
SET PYRO = C:\PYRO  
C:\PYRO\PYRO
```

DISK ERROR LOCATING SOURCE FILE

An error was encountered when PYRO! attempted to read the source diskette. This is usually caused by a damaged diskette. If the diskette was the original PYRO! distribution floppy, contact Fifth Generation Systems Customer Service at the number listed on the back cover. Otherwise, make another copy of the original diskette using DISKCOPY.

DISK ERROR READING PYRO.CFG

An error occurred when PYRO! attempted to read the disk drive. This indicates a defective area on the drive; call Fifth Generation Systems Technical Support for further assistance.

DISK ERROR UPDATING PYRO.CFG

An error occurred when PYRO! attempted to write to the disk drive. This indicates a defective area on the drive. Call Fifth Generation Systems Technical Support.

DISK ERROR WRITING FILE TO TARGET DRIVE

An error occurred when PYRO! attempted to write to the destination drive. Call Fifth Generation Systems Technical Support for assistance.

ERROR CREATING AUTOEXEC.BAT

A DOS error occurred when PYRO! attempted to create the AUTOEXEC.BAT file. This error can be caused by a damaged drive or by the root directory on the target drive containing more than the DOS limit of 512 entries.

ERROR CREATING TARGET DIRECTORY

An error occurred when PYRO! attempted to create a directory during installation. This is usually caused by too many entries in the root directory of the drive. The DOS limit is 512 directories and files. Remove some of the files in the root directory of the target drive.

ERROR READING AUTOEXEC.BAT

A DOS error occurred when PYRO! attempted to read the AUTOEXEC.BAT file. This error is usually caused by a damaged area on the drive. Call Fifth Generation Systems Technical Support for assistance.

ERROR UPDATING AUTOEXEC.BAT

A DOS error occurred when PYRO! attempted to write to the AUTOEXEC.BAT file during installation. This error usually results from a damaged drive. Call Fifth Generation Systems Technical Support for assistance.

INCORRECT VOLUME LABEL, PLEASE INSERT PYRO! DISKETTE

This message will be displayed if the incorrect diskette is inserted into the drive or if the working copy was not made using DISKCOPY. The correct volume label is PYRO.

INSUFFICIENT MEMORY

This message is displayed when there is not enough memory to execute the display module when the <SAMPLE> button is pressed. If your computer has insufficient memory, make more memory available by unloading any memory resident programs -- print spoolers, disk caches, RAM disks, desktop utilities, etc.

INSUFFICIENT SPACE ON TARGET DISK

There was not enough available space on the destination drive. PYRO! will need about 360K of available space.

INVALID PASSWORD

This message will be displayed when invalid keys or characters are used in the password entry.

NO DISPLAY MODULES FOUND IN CURRENT DIRECTORY

PYRO! could not find any display modules in the current directory. This error is most often caused by the environment variable being incorrectly set. The environment variable may be incorrectly set if PYRO! was installed without using PSETUP.EXE or if the DOS environment was out of available space.

If an **OUT OF ENVIRONMENT SPACE** message is displayed during boot up, you will need to add the following command to your CONFIG.SYS file:

SHELL = C:\COMMAND.COM /P /E: size

where **size** is the size of the DOS environment. The default size is 160 bytes. Increase this size until the **OUT OF ENVIRONMENT SPACE** message disappears and then reinstall PYRO!. If no **OUT OF ENVIRONMENT SPACE** message is displayed, reinstall PYRO! using PSETUP.EXE.

NO FILE FOUND ON SOURCE DISKETTE

Check to make sure the correct diskette is inserted.

PASSWORDS DON'T MATCH

This message will be displayed when the second password entered does not match the first password entered.

PSETUP syntax is:

PSETUP [options]

[options]:

/B - run in black & white on color monitor

This message will be displayed if an invalid option is chosen for PSETUP. The only valid option for PSETUP is "/B" which allows black & white display on color monitors.

SINCE NO DISPLAY MODULES HAVE BEEN SELECTED, PYRO! WILL SIMPLY BLANK THE SCREEN AT SLEEP TIME

This message will be displayed when none of the display modules are selected. This is not an error message.

UNABLE TO CREATE TARGET FILE

PYRO! was unable to create the file on the drive. The drive may be full in which case about 360K of drive space needs to be made available. If an attempt has been made to install PYRO! into the root directory which already has the DOS limit of 512 entries, you will also get this message.

UNABLE TO OPEN SOURCE FILE

PYRO! was unable to open the required file. This error can occur if the working diskette file structure is corrupted or deleted. Make sure the correct diskette is inserted. If the original distribution diskette is damaged, call Fifth Generation Systems Customer Service.

PYRO ERROR MESSAGES

CAN'T INSTALL: PRINT.COM ACTIVE

PYRO.EXE cannot install itself while PRINT.COM is spooling a print job. Wait until all print jobs have cleared before installing PYRO.EXE. PYRO! is not compatible with PRINT.COM under DOS 2.x.

Command line error, syntax is:

PYRO [options]

options:

/U - to unload PYRO! from memory

An invalid option was entered for PYRO.EXE. The only valid option is the "/U" option to uninstall PYRO.EXE.

ERROR OPENING PYRO.CFG, PYRO! NOT INSTALLED

PYRO! could not find the PYRO.CFG file in the correct subdirectory. This could also be caused by the environment variable being set incorrectly. If an **OUT OF ENVIRON-**

MENT SPACE message is displayed during boot up, add the following command to your CONFIG.SYS file:

SHELL = C:\COMMAND.COM /P /E: size

where **size** is the size of the DOS environment. The default size is 160 bytes. Increase this size until the **OUT OF ENVIRONMENT SPACE** message disappears then reinstall PYRO!. If no **OUT OF ENVIRONMENT SPACE** message is displayed, reinstall PYRO! using PSETUP.EXE.

ERROR READING PYRO.CFG, PYRO! NOT INSTALLED

A DOS error occurred when PYRO! attempted to read the PYRO.CFG file from the drive. This is usually caused by a damaged or bad area on the drive. PYRO.EXE will not install itself into memory if this occurs. Call Fifth Generation Systems Technical Support for assistance.

NOT INSTALLED

Cannot use the "/U" option to uninstall if PYRO.EXE is not already installed.

PYRO! ALREADY INSTALLED

PYRO!'s PYRO.EXE cannot be installed twice.

PYRO HAS BEEN UNLOADED AND ITS MEMORY FREED

This is the normal message displayed after PYRO.EXE has been successfully uninstalled using the "/U" option. This is not an error.

REQUIRES DOS 2.0 OR LATER VERSION

PYRO! will not work with any version of DOS prior to 2.00.

UNABLE TO LOCATE DOS ERRORMODE FLAG

May be the result of formatting with one version of DOS and running COMMAND.COM from another. Check the DOS brand and version by typing VER and COMMAND. Call Fifth Generation Systems Technical Support for further assistance.

THIS WAS NOT THE LAST TSR LOADED, SO IT CANNOT BE REMOVED FROM MEMORY

PYRO.EXE cannot be uninstalled if it was not the last TSR loaded. Unload TSRs installed after PYRO.EXE and then uninstall using the "/U" option.

UNKNOWN VIDEO ADAPTER

PYRO! encountered an unfamiliar video display adapter. The supported display adapters are: MDA, Hercules Monochrome & InColor, CGA, MCGA, EGA, and VGA. Call Fifth Generation Systems Technical Support for further assistance.

Activate - to invoke a PYRO! display.

Active - when a module is selected to be available for the sleep mode.

Application - a software program that performs a specific task.

Button - an option enclosed in brackets <>. Examples are <**Sample**>, <**Config**>, and <**When to Wake**>.

CGA - acronym for Color Graphics Adapter. A bit-mapped graphics display adapter for IBM PC-compatible computers. CGAs display four colors simultaneously.

Clock - a PYRO! module that displays the current time in 12 or 24 hour format and moves around the screen.

Config - a button on the configure screen that allows you to personalize each module.

Configure - to select conditions/options that activate or deactivate individual modules. **Configure PYRO!** from the **CONFIGURATION** menu lets you change sleep and wake conditions and make modules active/inactive

Copy - during the installation, PYRO! lets you choose to **Copy** its files to your hard drive or **Skip**. **Copy** duplicates the files from the floppy to your hard drive. **Skip** does not duplicate the files.

Displays - used synonymously with modules. Displays are the modules available that protect your screen from burn-in. PYRO! replaces the image on your screen with one that constantly moves.

EGA - acronym for Enhanced Graphics Adapter. A color bit-mapped graphics display adapter for IBM PC-compatible computers. EGAs display up to 16 colors simultaneously.

Fireworks - a PYRO! module that displays exploding fireworks. Fireworks can be configured to make sounds.

Hot Key - the combination that activates the sleep mode. Use CTRL+ALT+white key, CTRL+white key, or ALT+white key as the Hot Key combination. White keys are the alphanumeric white keys located in the center of your keyboard (include: < > , . ? / : ; " ' { } [] | \ + = _ -) (* & ^ % \$ # @ ! ~ ` , numbers 0-9, upper and lower case letters A-Z, PYRO! is case-sensitive). White keys do not include function or Esc keys or the space bar.

Idle Time - the amount of time you specify as the Sleep Delay. Your computer is idle when no keys have been pressed or the mouse has not been clicked or moved.

MCGA - acronym for Multi Color Graphics Array. A color bit-mapped display standard for IBM PS/2-compatible computers.

Message - a PYRO! module that displays up to a 40-character message.

Modules - the displays in PYRO! that prevent burn-in. The modules include Fireworks, Roving Picture, Clock, Message, Sleeper or more that you add. PYRO! also blanks your screen when no modules are active.

Mouse - a pointing device equipped with one or more control buttons. In PYRO! it allows you to make selections from pull-down menus and position the cursor on the screen. The mouse can also be used to activate sleep and wake the screen from sleep.

Password - 3-15 character combination that protects your screen from unauthorized waking. Upper and lower case letters are acceptable; PYRO! is case-sensitive. Password is an optional feature that can be defined during installation.

.PCX file - a graphics file created by or compatible with PC Paintbrush.

Personalize - to modify the Sleep and Wake conditions to suit your needs as they change.

Pull-down Menus - a means of selecting an operation a computer is to perform.

RAM - acronym for Random Access Memory. The computer's primary working memory. Program instructions and data are stored here so they are directly accessible to the central processing unit (CPU).

READ.ME file - a text file included with the PYRO! program that provides important information about PYRO! that may not be included in the manual.

Reboot - also called warm boot, or soft boot. Reboot occurs when the CTRL+ALT+DELETE keys are pressed simultaneously, the Reset button is used, or when the computer is turned off then on.

Roving Picture - a PYRO! module that displays most .PCX files. PYRO!'s Roving Picture is a car enclosed inside a box and moves around the screen.

Skip - allows you to reinstall PYRO! to your hard drive without copying the files to your hard drive. Choose **Skip** to reinstall PYRO! if the PYRO! files are on your hard drive.

Sleep - PYRO! replaces the current screen image with a module. Sleep is activated by pressing the Hot Key combination, or moving the mouse to the Sleep Now Corner. Sleep is also activated when your keys and mouse have been idle for the Sleep Delay time you specified. Your screen is in the sleep mode when a PYRO! module is displayed.

Sleep Delay - refers to the time your computer remains idle before PYRO! automatically puts the screen to sleep. The computer is idle when no keys are pressed or the mouse has not moved or been clicked.

Sleep Never - refers to the corner of the screen that prohibits sleep when the mouse is positioned there.

Sleep Now - refers to the corner of the screen that activates sleep when the mouse is positioned there.

Sleeper - a PYRO! module that displays a 3-D graphic that moves around the screen. Sleeper can be configured to move at different speeds.

TSR - acronym for Terminate-and-Stay-Resident. A TSR is a program that remains in random access memory (RAM) all the time.

VGA - acronym for Video Graphics Array. A color bit-mapped display standard for IBM PS/2-compatible computers. VGAs display up to 256 colors simultaneously.

Wake - a PYRO! module is stopped, the original screen is accessible. Conditions which wake a screen include keyboard and mouse movement or password typed.

When to Sleep - refers to the conditions which activate the sleep mode. Conditions which activate sleep include pressing the Hot Key combination, positioning the mouse in the Sleep Now Corner, or expiration of the Sleep Delay time.

When to Wake - refers to the conditions which stop the display and return you to the original screen. These conditions include keyboard and mouse movement.

White Keys - the alphanumeric keys located in the center of your keyboard. The white keys are all numbers 0-9, upper and lower case letters (PYRO! is case-sensitive), and symbols < > , . ? / : ; " ' { [] } | \ + = _ -) (* & ^ % \$ # @ ! ~ ` The white function keys, space bar, and ESC key are not considered white keys.

- Activate a PYRO! module 21
 - (sleep mode) 21
- burn-in 1
- button 3, 35
- Change password 19-20
- Clock 16, 35
- Conditions that wake screen 19, 21-22, 26
- Conditions that activate sleeping screen 17-18, 21, 26
- Configure PYRO! 10-13, 15-19, 25, 35
- Copy Protection 5
- Define Password 9-10
- Displays 35
- Error Messages 29-34
- Exit PYRO! 25, 41
- Fireworks 16, 35
- Hot Key 12, 18, 36
- Install PYRO! 6-14, 25
- Message 16, 36
- Module 36
 - personalizing 16-17
- Password 9-10
 - change 19-20
- Personalize PYRO! 15-19
- .PCX file 16, 36
- Put screen to sleep 21
 - with keyboard 21
 - with mouse 21
- PYRO! OFF button 17, 23
- PYRO! ON button 17
- Return to original screen 18-19
 - see also wake screen
- Roving Picture 16, 37
- Sample a module 10, 16, 26
- Sleep 37
- Sleep Delay 11, 18, 37
- Sleep Never Corner 11, 17-18, 37
- Sleep Now Corner 11, 17-18, 37
- Sleeper 17, 38
- Troubleshooting 27-28
- Wake screen 21-22
 - with keyboard 21-22
 - with mouse 21-22
- When to sleep 11-12, 17-18, 26, 38
- When to wake 12-13, 18-19, 26, 38
- Working Copy 5-6

Keystroke Quick Reference

Following is a list of the keystrokes that can be used with PYRO!

KEYSTROKES FOR SELECTING FROM THE PULL-DOWN MENUS

Install - **ALT+I+I**
Uninstall - **ALT+I+U**
Exit - **ALT+I+X**
Configure PYRO! - **ALT+C+C**
HELP - **ALT+H+A**

OTHER KEYSTROKES

ARROW KEYS	- moves the cursor.
DELETE	- used to erase letters. It cannot deselect any option.
ENTER	- used to make a selection.
TAB	- moves the cursor to the buttons (ie OK, SAMPLE, When to Wake, etc.)

Fifth Generation Systems, Inc.

10049 N. Reiger Road

Baton Rouge, LA 70809-4562

(504) 291-7221

Sales Number: (800) 873-4384

Technical Support: (504) 291-7283

01001311999 2.0 UK4
PP
SER# PP3-3307685



*This product is in no way associated with or has origination in Fisher Scientific or Allied Corporation.



FIFTH GENERATION SYSTEMS *The Creators of FastBack*