

SCO OpenServer 6 安裝說明

SCO OpenServer 6 目前有 Enterprise Edition 與 Starter Edition 兩種版本，安裝所需的基本硬體需求請參考下列說明：

SCO OpenServer 6 系統硬體安裝需求：

硬 體	最低安裝要求	建議規格	最高支援
處理器	Intel® Celeron® Pentium®, Pentium II, Pentium III, Pentium III Xeon, Pentium 4, or Intel Xeon 或其他相容處理器, 例如, AMD Athlon™, Athlon 64, Duron™, Sempron™, 或 Opteron™	Pentium P4	32 CPUs
記憶體	64MB, 128MB(視窗環境)	256MB	64GB
磁碟空間	4GB	8GB	1TB(per disk)
HBA	IDE	SCSI, SATA	1024

SCO OpenServer 6 版本：

	Starter Edition	Enterprise Edition
使用者數	2	10
記憶體	1GB	4GB
處理器	1	4

以下我們將針對 SCO OpenServer 6 的安裝步驟一一說明，同時搭配實際安裝畫面以提供解釋。

安裝步驟：

- 放入 OSR6 光碟片，以 CD-ROM 開機方式啟動系統，若不需要外掛 HBA 磁片，則在 Boot：提示符號後直接按 ENTER 鍵

```
Starting SCO OpenServer(tm) Release 6 ...
Bootstrap Command Processor
Press <ENTER> to begin installation [? for help]
[auto boot unix 0:28] _
```

- 系統顯示系統使用授權，請直接按 ENTER 鍵

```
Copyright (c) 1976-2005 The SCO Group, Inc. and its suppliers.
All Rights Reserved.

RESTRICTED RIGHTS LEGEND:

When licensed to a U.S., State, or Local Government, all Software
produced by SCO is commercial computer software as defined in
FAR 12.212, and has been developed exclusively at private expense.
All technical data, or SCO commercial computer software/documentation
is subject to the provisions of FAR 12.211 - Technical Data, and
FAR 12.212 - Computer Software respectively, or clauses providing SCO
equivalent protections in DFARS or other agency specific regulations.

Manufacturer: The SCO Group, Inc., 355 South 520 West,
Suite 100, Lindon, UT 84042-1911.

Continue

Press <Enter> to continue. Press <F1> for general help.
Enter=Continue F1=Help F2=Abort
```

- 說明安裝過程中按鍵的使用，直接按 ENTER 鍵

```

Welcome to SCO OpenServer, Release 6.0.0

You will now be prompted for the information needed
to install your system. Default values are provided
where useful.

If you previously saved installation responses to a
floppy diskette, remove the current diskette, insert
the Response Diskette, and press <F3>.

Use the following keys to navigate the installation:

    F1    - View help for the current screen
    Esc   - Move back to the previous screen
    Enter - Move forward to the next screen

Other keys are listed at the bottom of the screen
when they are active.

                                Continue

Press <Enter> to continue. Press F1 for general help.
Esc=Previous Enter=Continue F1=Help F2=Abort F3=Read Response Diskette
```

- 接受或拒絕授權說明，請選擇 Accept

```

You must agree to the terms and conditions of the End User License
Agreement (EULA) in order to continue with the installation.

If you haven't read the EULA, please do so now. If you received
a Certificate of License and Authenticity, you will find a copy of
the EULA enclosed with your license. If you received your license
electronically, you can find the EULA at:

    http://www.sco.com/licensing

The EULA is also available on this CD-ROM in:

    /info/license

If you accept the terms and conditions of the EULA, select 'Accept'
and press <Enter>. If you do not accept these terms and conditions
the installation will be terminated.

                                Decline          Accept

Cancel the installation
Esc=Previous Enter=Continue F1=Display EULA F2=Abort
```

- 是否須載入其他的 HBA 驅動程式，請依照實際狀況選擇

```
The installation is ready to search for Host Bus Adapters and the
connected devices. OpenServer installation has default drivers for
many popular adapters. However, if you have newer or additional
drivers you wish to use during the installation, you can add them
at this point.

If you do have additional HBA drivers you wish to use during the
installation, select "yes" to the question below. When you have
finished loading all additional HBA drivers, select "no" and
proceed with the installation.

Use the <Space> key to alternate responses.

Load more HBA drivers?  no

Accept above choices

Proceed with installation
Esc=Previous Enter=Continue F1=Help F2=Abort Space=Choices
```

- 確認已經載入的 HBA 驅動程式，直接按 ENTER 鍵

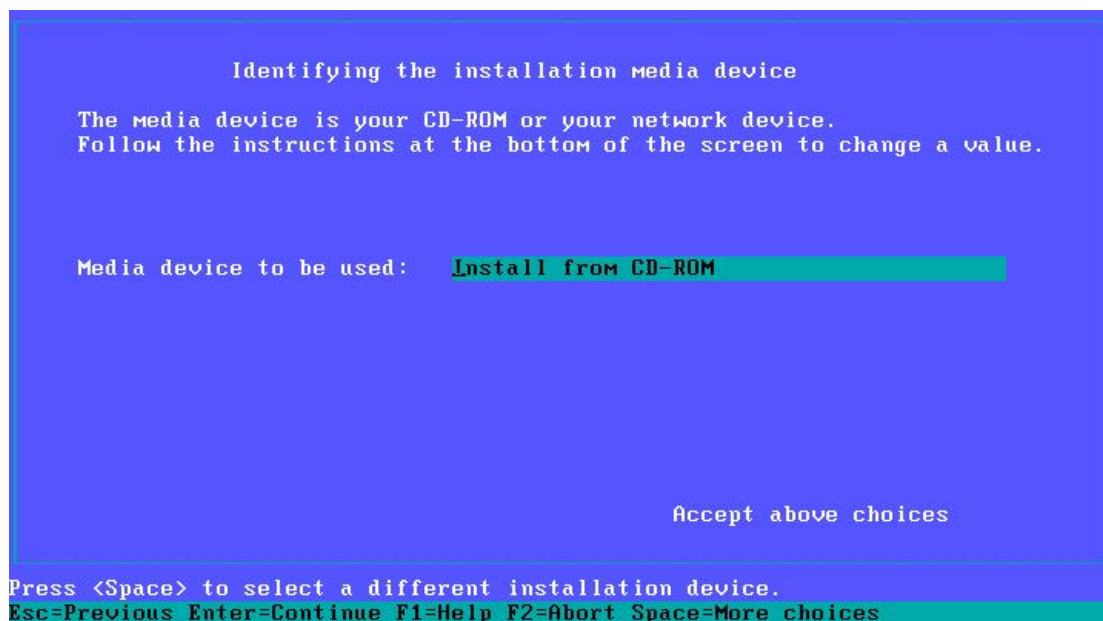
```
Host bus adapters have been extracted and are ready to be used to
detect the hardware installed in the system. Drivers can be omitted
by deselecting them from the list of extracted drivers. Press <Space>
to modify the list of adapter drivers to be used.

Available Drivers  All Drivers Selected

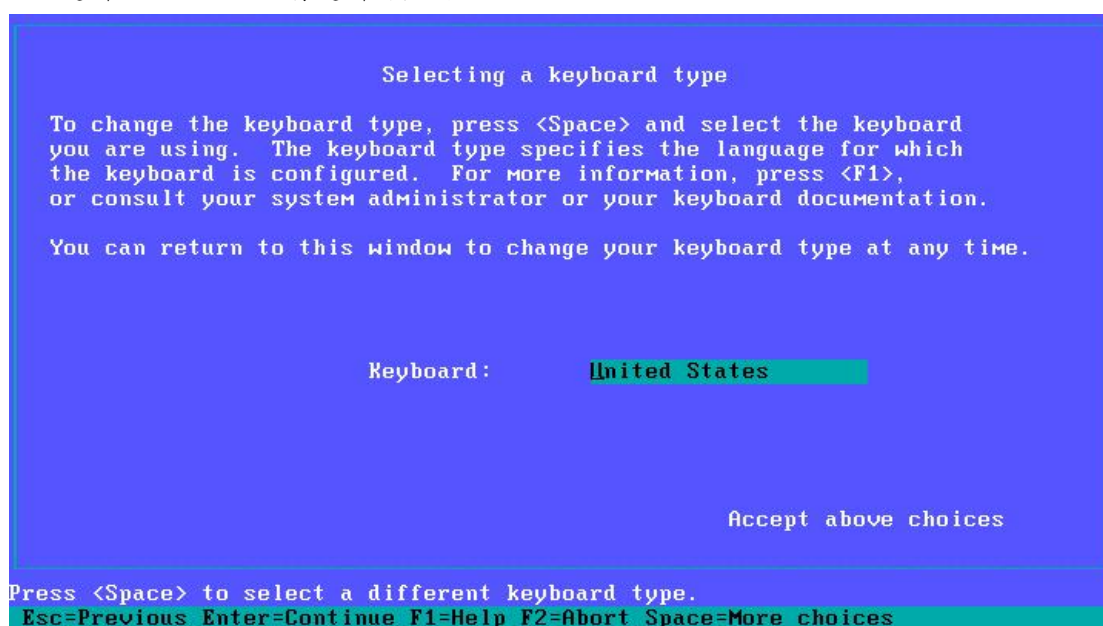
Accept above choices

Press <Space> for choices
Esc=Previous Enter=Continue F1=Help F2=Abort F8=DCU Space=Choices
```

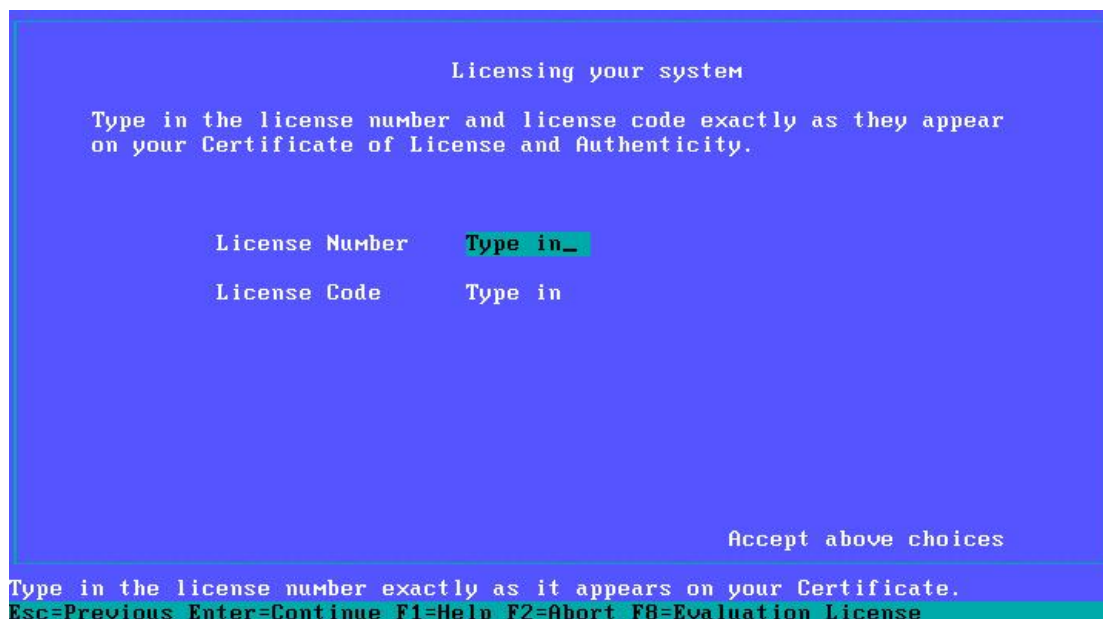
- 選擇安裝方式，一般而言，均使用 CD-ROM 安裝



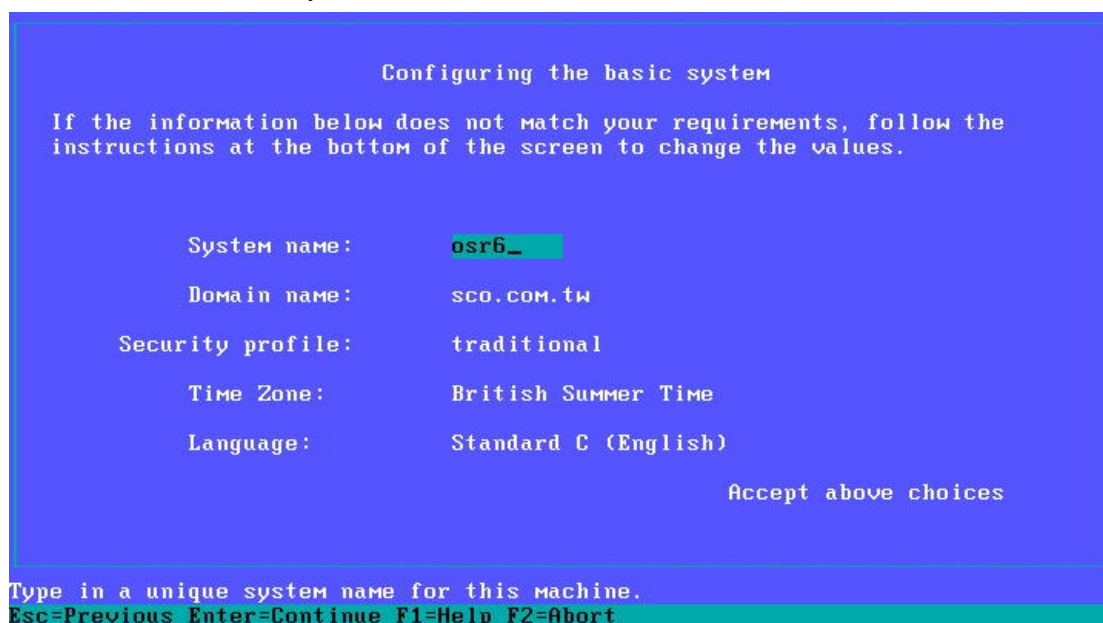
- 選擇鍵盤配置，請選擇預設值



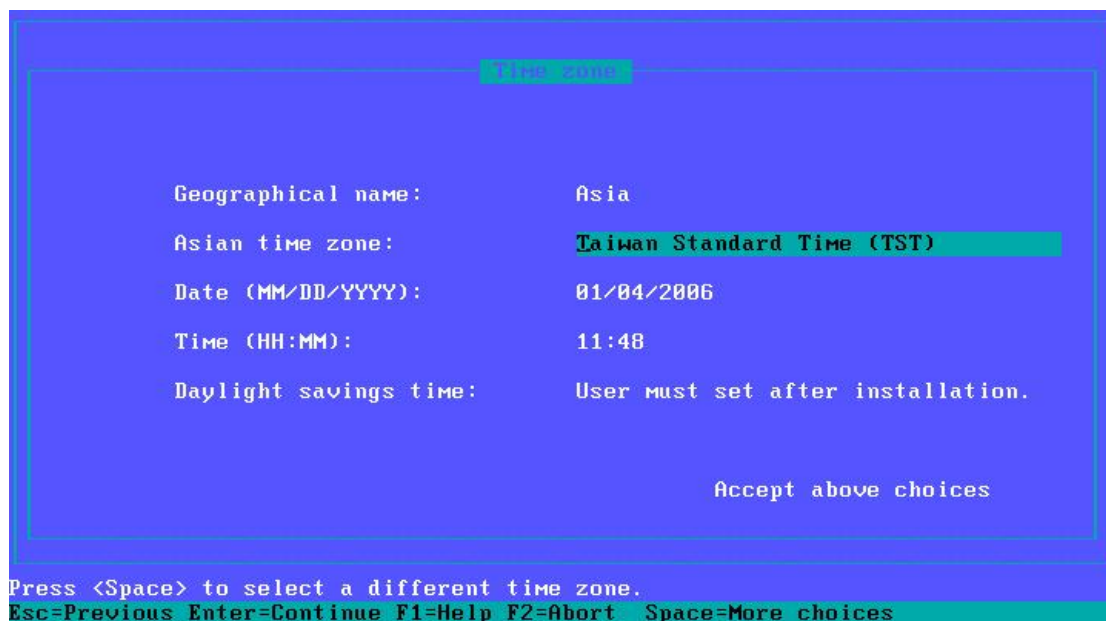
➤ 輸入 License Information



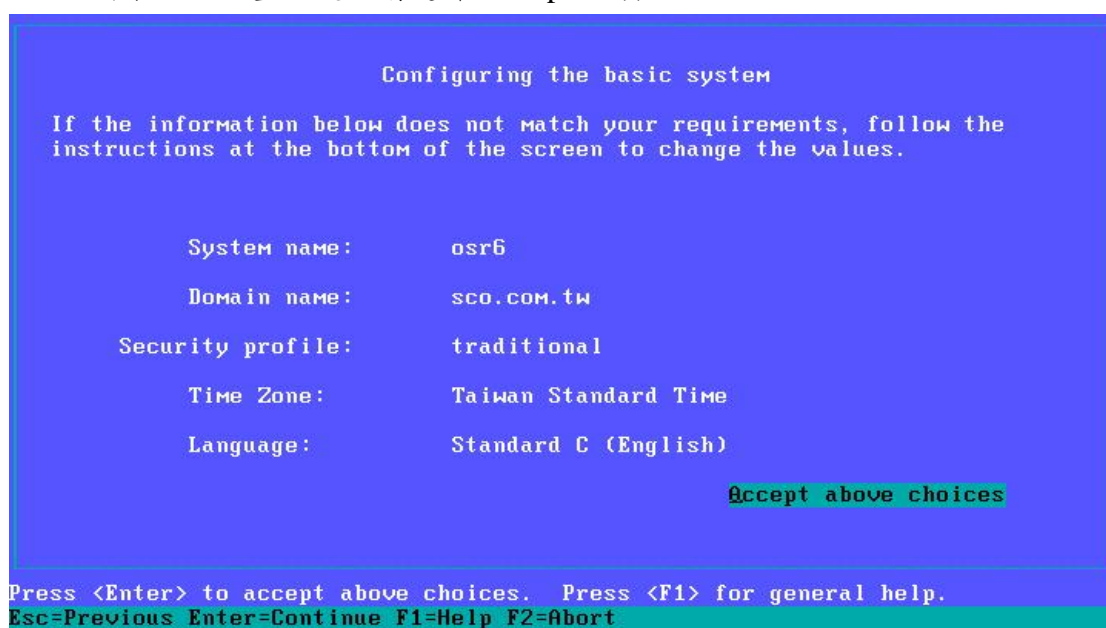
➤ 系統設定，必須修改的項目為系統名稱、網域名稱與時區，其他選項則依照實際需求，輸入 System name 與 Domain name 之後，進入時區設定



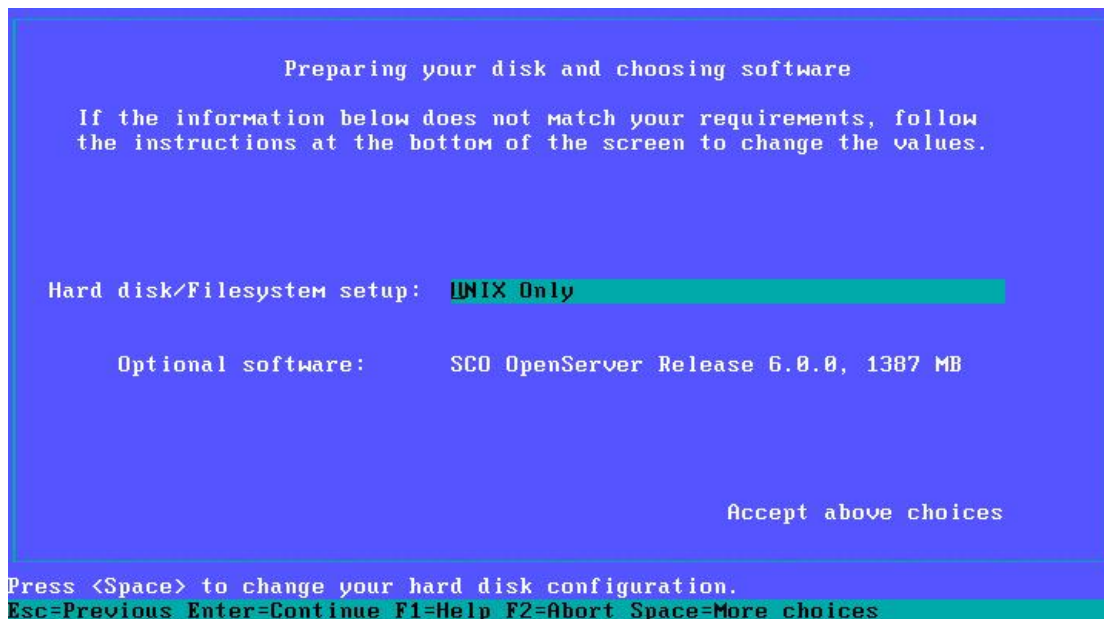
- 時區設定請選擇 Asia，Taiwan Standard Time，並 Accept 回到上一畫面



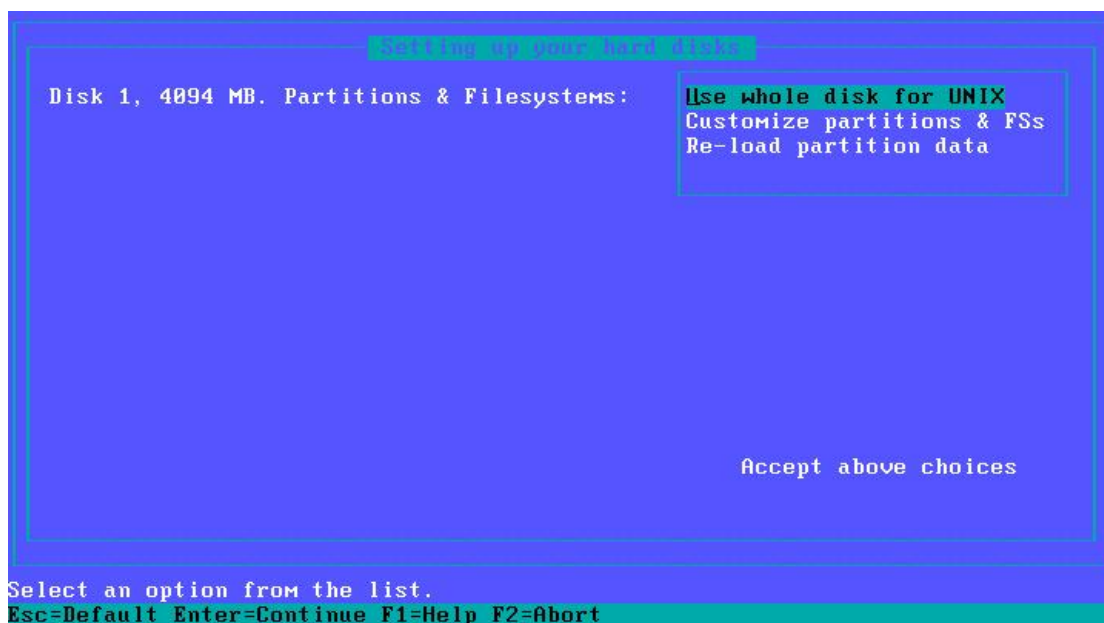
- 回到系統設定畫面後，請選擇 Accept 繼續



- 硬碟規劃與選擇安裝系統套件，一般而言只需執行硬碟規劃即可



- 進入硬碟規劃畫面後，可以依照實際狀況選擇



- 接著設定硬碟磁區規劃，可以直接接受預設值

```

=====
Type          Status  Start  End    %      Cylinders  Size (MB)
=====
1  UNIX System  Active  0      521    100     522        4094
2  unused              0
3  unused              0
4  unused              0

Number of cylinders: 522  Currently used: 522

Accept above choices

Press <Space> to change the partition type.
Esc=Previous Enter=Continue F1=Help F2=Abort Space=More choices
    
```

- 接著設定檔案系統與大小配置，依照實際狀況，否則請接受預設值

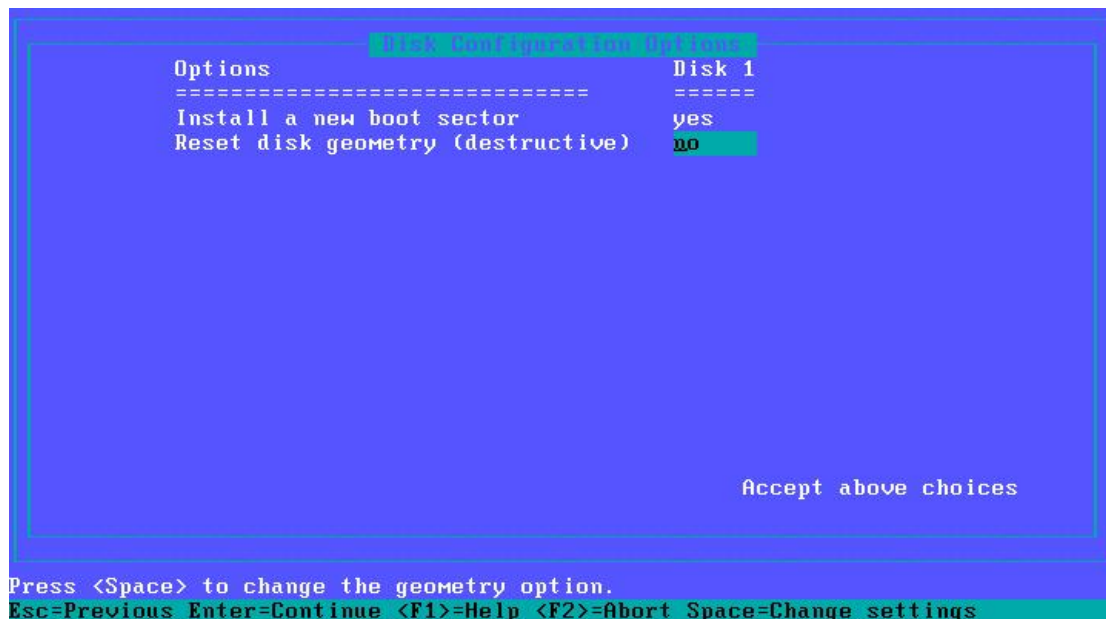
```

=====
Filesystem    Description          Type  Size
=====
/              Root File System    udfs  3681
/stand        Boot File System    EAFS  40
/dev/swap     Swap Slice          slice  373
/dev/dump     Dump Slice          off
/u            User File System    off
Renameable FS/Slice  off
Renameable FS/Slice  off
/usr/local    Renameable FS/Slice  off
Renameable FS/Slice  off
Renameable FS/Slice  off
Renameable FS/Slice  off
/tmp          Temporary File System  off
/var/tmp      Temporary File System  off
(memfs sizes are included in /dev/swap size)
Disk 1
Available (MB) 4094
Remaining (MB) 0

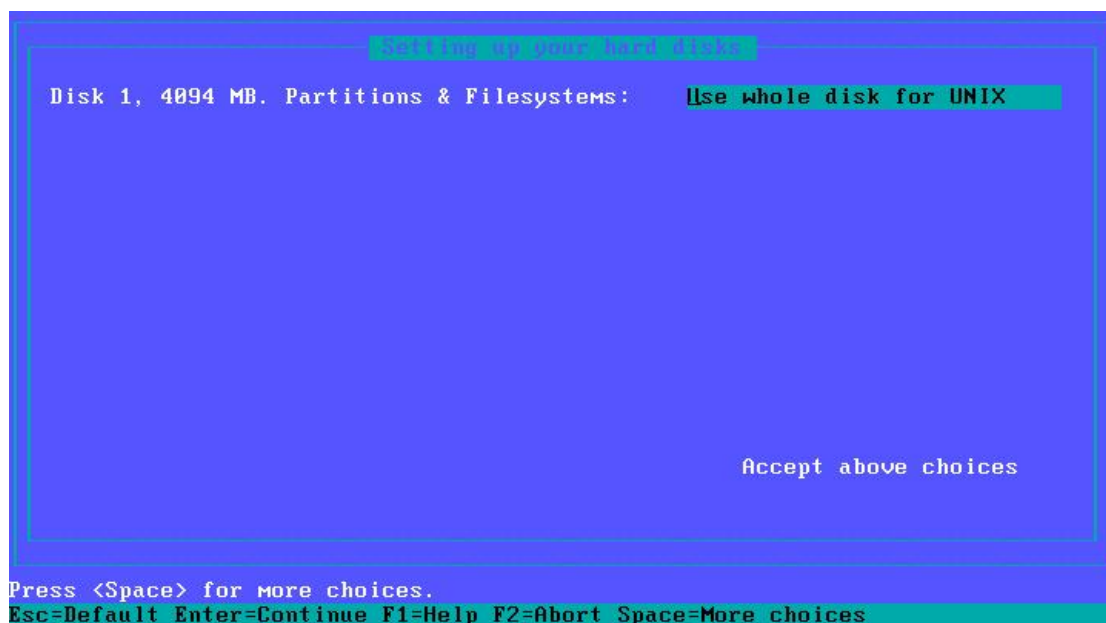
Accept above choices

Press <Space> to select a filesystem type.
Esc=Previous Enter=Continue F1=Help F2=Abort Space=More choices
    
```

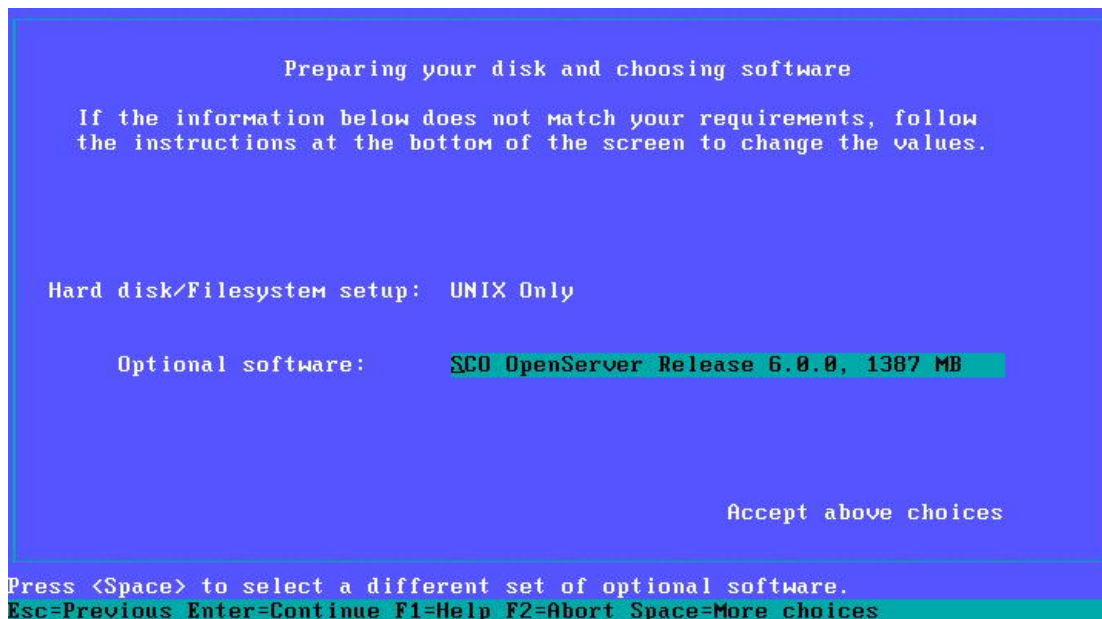
- 設定磁碟設定選項，請接受預設值



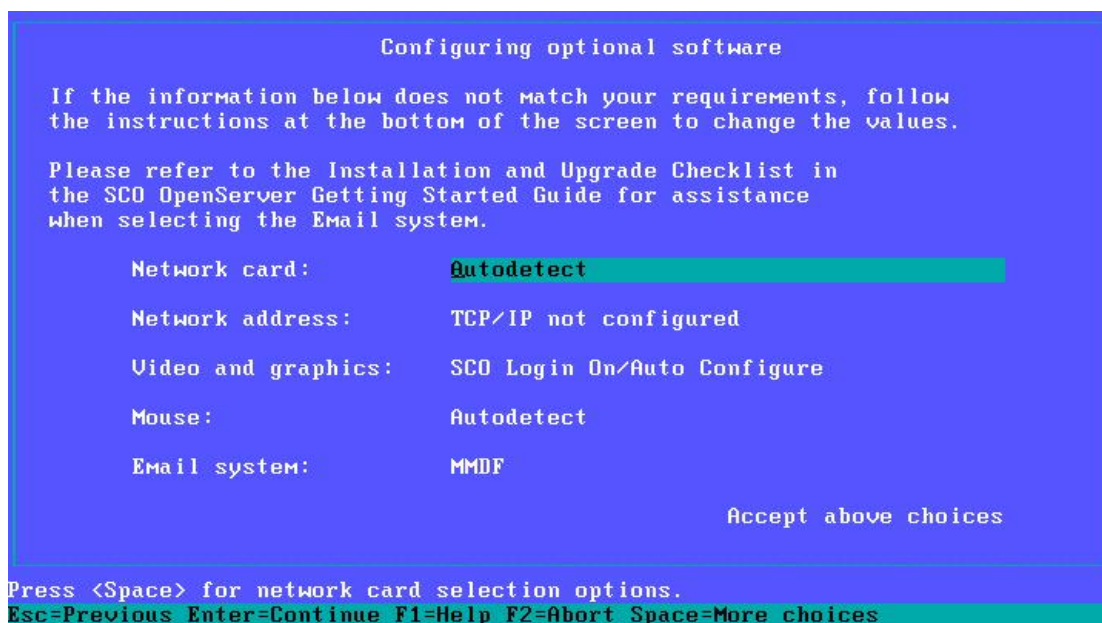
- 回到前畫面



➤ 回到前畫面



➤ 設定網路與視窗環境，網路卡與滑鼠均為自動偵測



- 設定網路，包括 IP 位址、Netmask、Broadcast 網址、Gateway 與 DNS 伺服器

```

Setting network address for osr6.sco.com.tw

TCP/IP networking parameters:

          Use DHCP?      no
          IP Address:    192.168.1.36
          Net mask:      255.255.255.0
          Broadcast address: 192.168.1.255
          Gateway address: 192.168.1.1
          Primary nameserver address: 168.95.1.1_
          Alternate nameserver address:
          Alternate nameserver address:
          TCP framing type:  ETHERNET_II

                                     Accept above choices
    
```

Type in the IP address of the primary nameserver to service this client.
 Esc=Previous Enter=Continue F1=Help F2=Abort Space=Choices

- 回到前畫面後，自動偵測滑鼠，同時建議使用 Sendmail 郵件系統

```

Configuring optional software

If the information below does not match your requirements, follow
the instructions at the bottom of the screen to change the values.

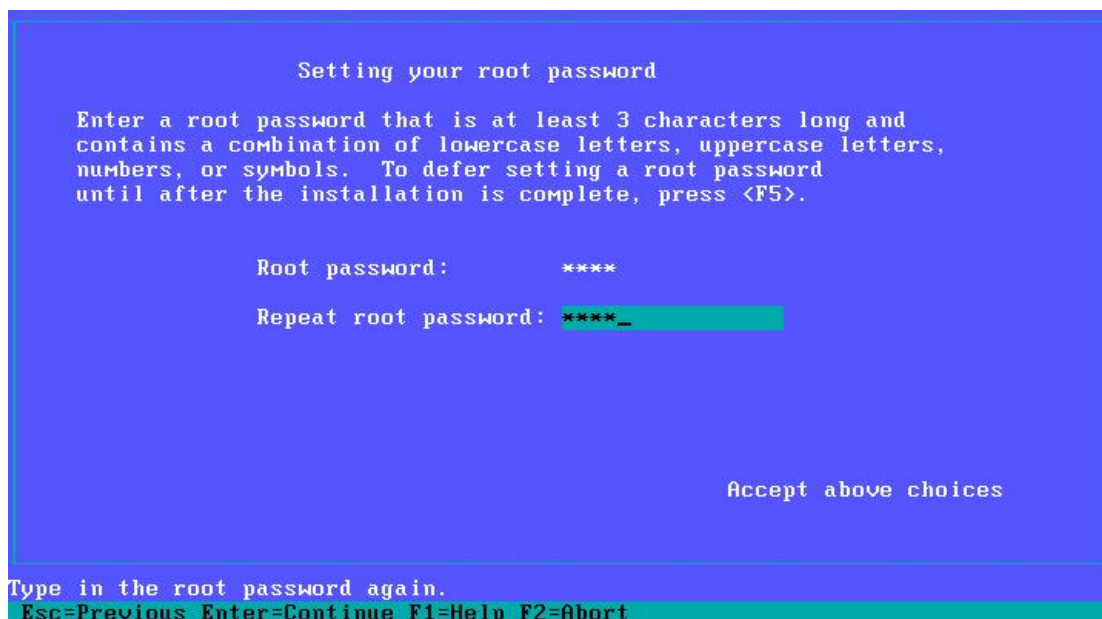
Please refer to the Installation and Upgrade Checklist in
the SCO OpenServer Getting Started Guide for assistance
when selecting the Email system.

Network card:          AMD_PCnet_family_mdi_driver
Network address:      TCP/IP configured
Video and graphics:   SCO Login On/Auto Configure
Mouse:                PS/2-compatible Mouse, 3 buttons
Email system:         SendMail

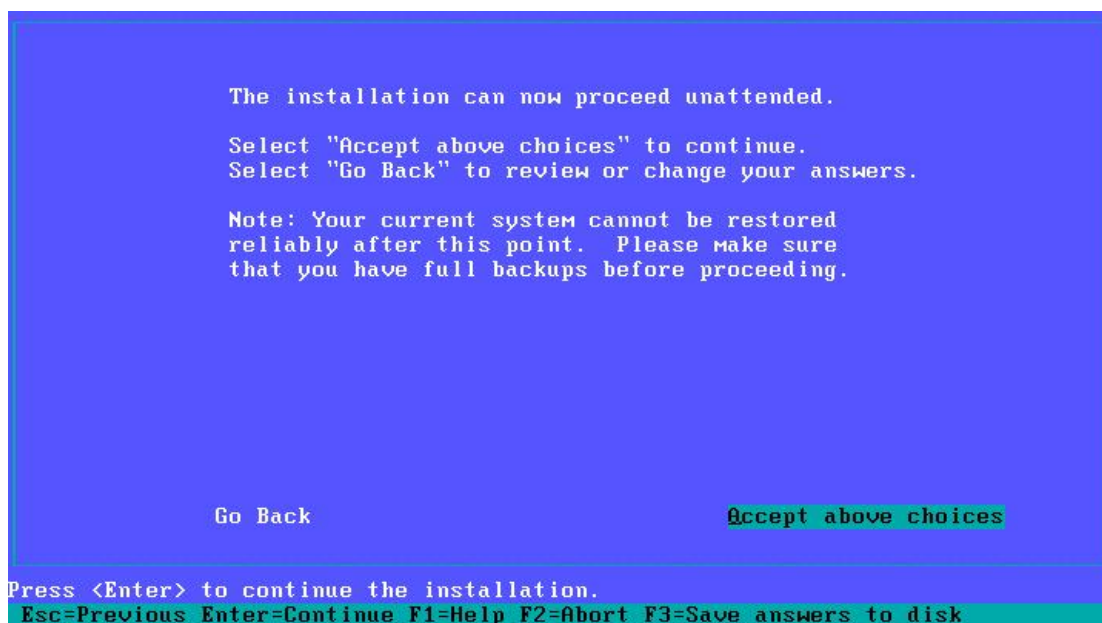
                                     Accept above choices
    
```

Press <Enter> to accept above choices. Press <F1> for general help.
 Esc=Previous Enter=Continue F1=Help F2=Abort Space=More choices

➤ 設定管理者密碼



➤ 最後安裝確認，若無其他問題請直接選擇接受，系統將開始安裝



以上步驟，以一般 Pentium 4 系統約需時 50 分鐘。

安裝完畢後，請上 <http://www.sco.com/support/download.html> 或 <ftp.sco.com> 下載相關 SCO 修正，例如 Maintenance Pack。

本文所提及之公司名稱與產品商標分屬各公司或個人所有。

文件提供：SCO TAIWAN 許景超