

SCO OpenServer 5.0.7 安裝說明

SCO OpenServer 5.0.7 是 x86 平台上最受歡迎的 UNIX 作業系統之一，目前 OpenServer 5.0.7 有 Enterprise Edition、Host Edition 與 Desktop Edition 三種版本，而安裝所需的基本硬體需求請參考下列說明：

最低基本安裝需求：

- 32MB of RAM
- 硬碟空間
 - 400MB for Host System
 - 550MB for Desktop System
 - 600MB for Enterprise System
- Intel 或 Intel-compatible 處理器，包括：
 - Intel 486、Pentium、Pentium II、III、4、Celeron 與 Xeon CPUs
 - AMD K5、K6、Duron、Athlon、Athlon XP 與 Athlon MP CPUs
- 顯示卡
- 儲存設備
- 滑鼠

建議安裝需求：

- 64MB 到 256MB of RAM
- 2GB SCSI or better 硬碟
- 2 顆到 4 顆 Intel 或 Intel-compatible 處理器，包括：
 - Intel Pentium III、Pentium 4 與 Xeon CPUs
 - AMD Athlon MP CPU
- RAID 或 Ultra-SCSI 儲存配備
- 顯示卡
- 滑鼠
- 網路卡

最大硬體支援：

- 4GB of RAM
- 137GB IDE 硬碟
- 500GB SCSI 硬碟
- 1 CPU for Desktop System
- 4 CPUs for Host 與 Enterprise System

以下我們將針對 SCO OpenServer 5.0.7 的安裝步驟一一說明，同時搭配實際安裝畫面以提供解釋。

安裝步驟：

- 放入 OSR507 光碟片，以 CD-ROM 開機方式啟動系統，若不需要外掛 HBA 磁片，則在 Boot：提示符號後直接按 ENTER 鍵

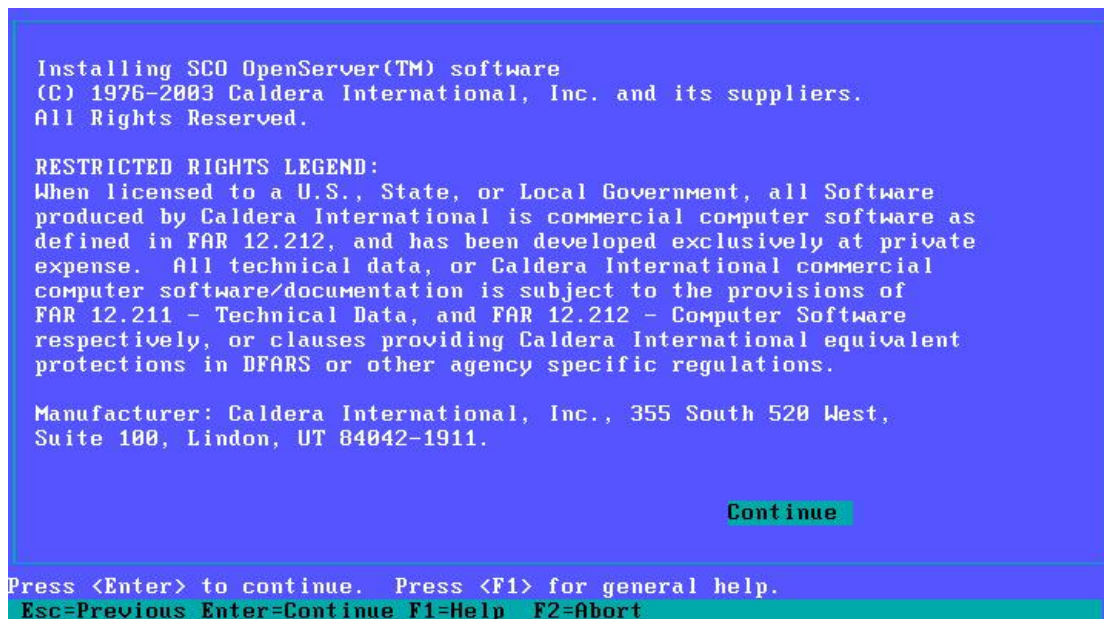
```
SCO OpenServer(TM) Release 5
Boot
: -
```

- 系統會偵測目前硬體，請直接按 ENTER 鍵

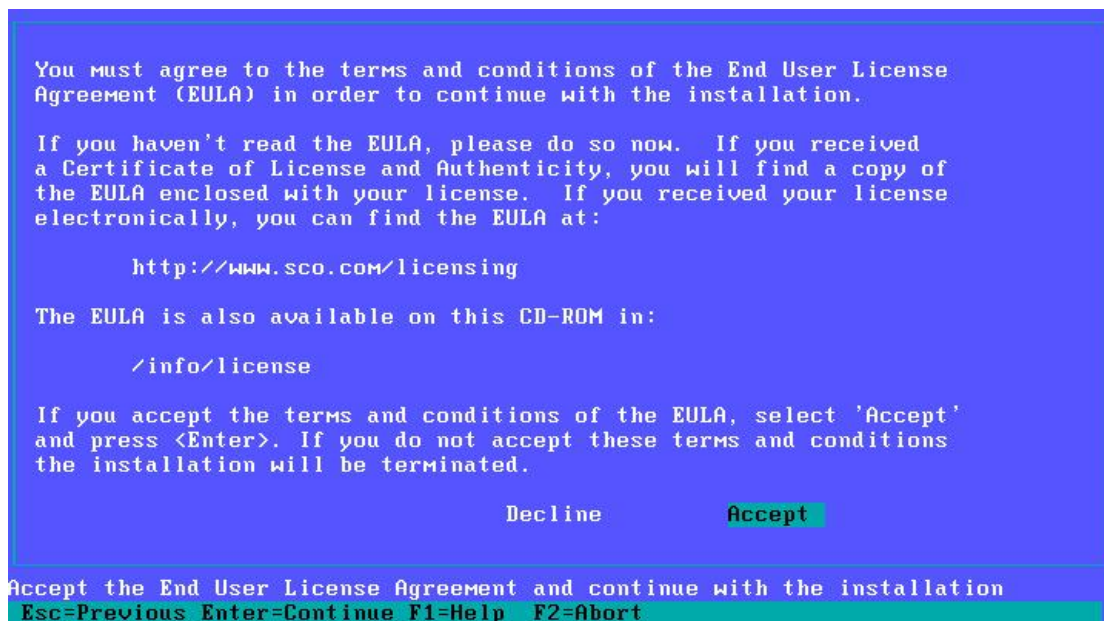
```
device      address      vec dma comment
-----
%kernel    -           - -   rel=3.2v5.0.7 kid=2003-02-18
%cpu       -           - -   unit=1 family=15
%cpuid     -           - -   unit=1 vend=GenuineIntel t fms=0:15:3:8(0)
%fpu       -           13 -   unit=1 type=80387-compatible
%pci       0x0CF8-0x0CFF - -   am=1 sc=0 buses=4
%PnP      -           - -   nodes=0
%clock     -           - -   type=TSC/2.520019437Ghz
%scodb    -           - -   conskey=Alt-Ctrl-d siokey=^X
%serial    0x03F8-0x03FF 4 -   unit=0 type=Standard nports=1 base=0 16550A/16
%serial    0x02F8-0x02FF 3 -   unit=1 type=Standard nports=1 base=8 16550A/16
%floppy    0x03F2-0x03F7 6 2   unit=0 type=135ds18
%console   -           - -   unit=vga type=0 num=12 scoansi=1 scroll=50
%kbmouse  0x0060-0x0064 12 -   type=Keyboard!PS/2 mouse (wheel) id=0x03
%adapter   0x0170-0x0177 15 -   type=IDE ctlr=secondary dvr=wd
%udi       -           - -   UDI environment
%adapter   -           - -   ha=0 type=usb_msto UDI SCSI HBA
%disk      0x01F0-0x01F7 14 -   type=W0 unit=0 cyls=522 hds=255 secs=63
%cd-rom    -           - -   type=IDE unit=0 ctlr=sec cfg=mst dvr=Srom->wd
mem: total = 261692k, kernel = 101028k, user = 160664k
rootdev = 31/7, pipedev = 31/7, dumpdev = <none>
kernel: Hz = 100, i/o bufs = 76772k (high bufs = 75748k)

Press <Enter> to begin installation _
```

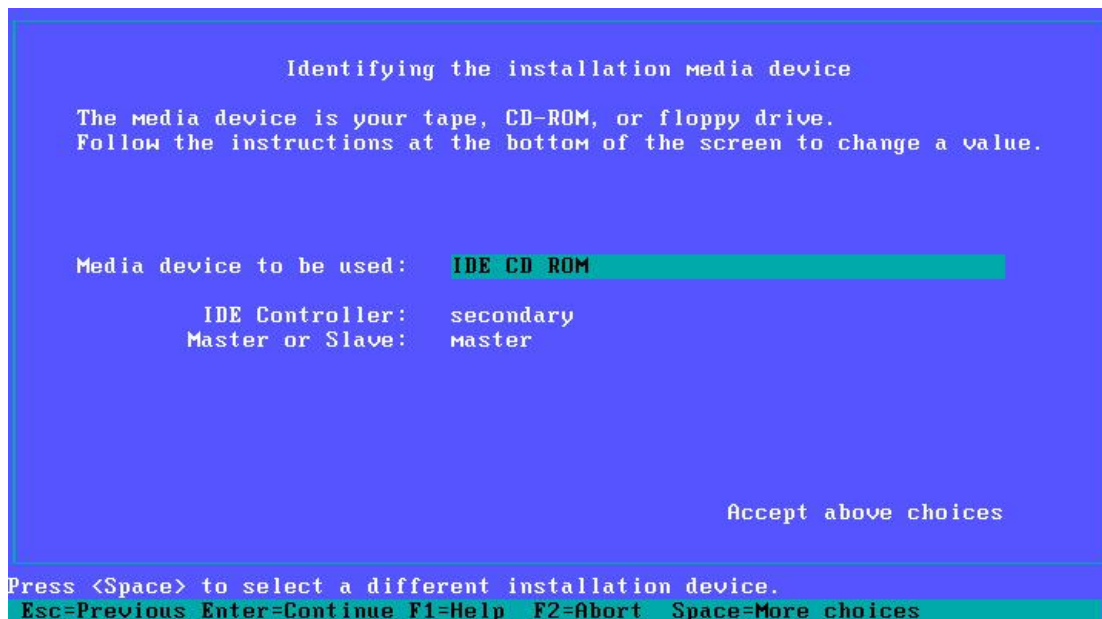
- 版權說明，直接按 ENTER 鍵



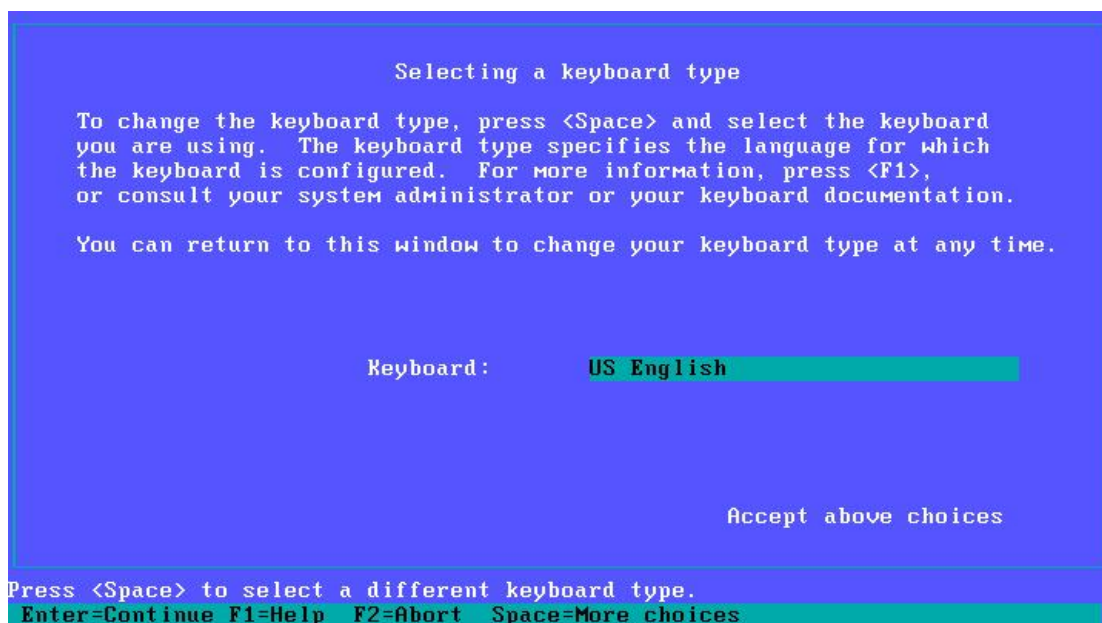
- 接受或拒絕授權說明，請選擇 Accept



- 選擇光碟機所在的位置，請依照實際狀況選擇



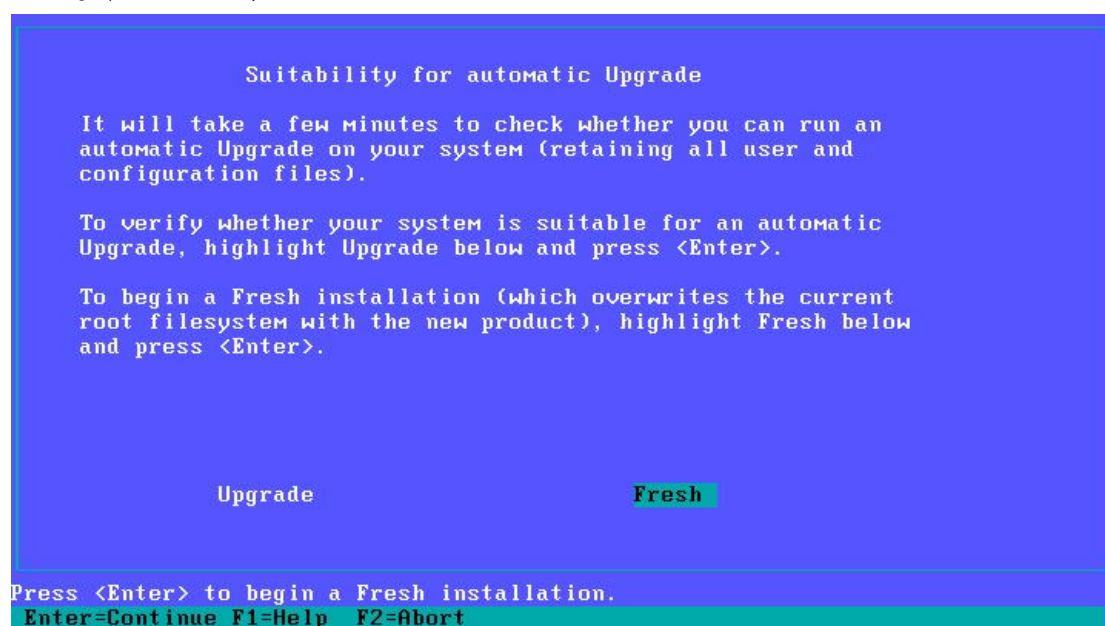
- 選擇鍵盤配置，請使用預設 US English



➤ 輸入 License Number、License Code 與 License Data



➤ 選擇 Fresh 安裝



- 設定系統資訊，包括 System name，Domain name，Security profile，Time zone，Language，一般而言，使用者需設定 System name，Domain name，Time zone(按空白鍵鍵入選擇 Asia，香港時間或中國標準時間)

```
Configuring the basic system

If the information below does not match your requirements, follow the
the instructions at the bottom of the screen to change the values.

System name:      osr507
Domain name:      sco.com.tw
Security profile:  Traditional
Time zone:        China Standard Time
Language:         Standard C (English)

Accept above choices

Press <Space> to select a different time zone.
Esc=Previous Enter=Continue F1=Help F2=Abort Space=More choices
```

- 系統安裝選項，請直接選擇 Accept above choices

```
Initial system profile

The profile you choose pre-selects the software packages most useful
for your system type. Press <F1> for details on each profile.

Standard Enterprise system configuration:  Yes
Lightweight character terminal configuration: No

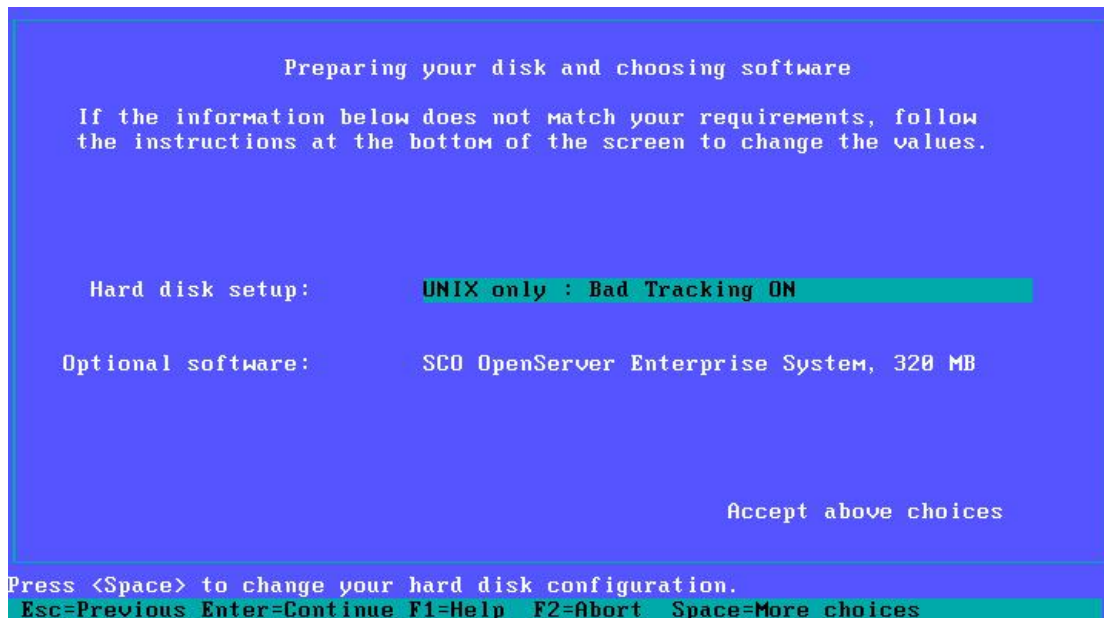
If you run large database products, choose the following:

Database services:  No

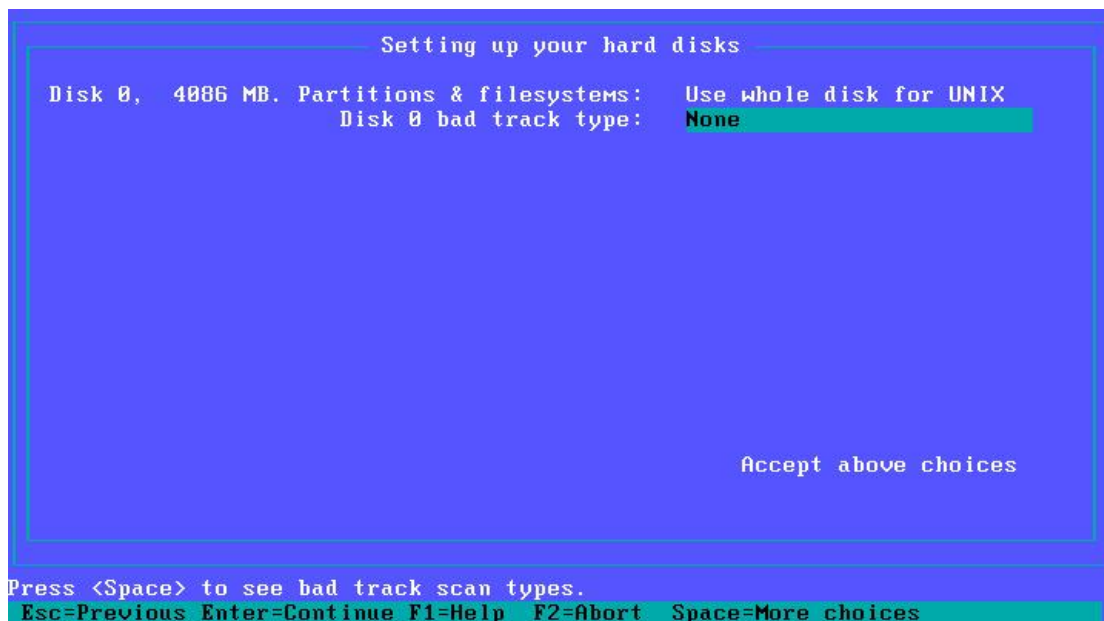
Accept above choices

Press <Space> to toggle between Yes and No.
Esc=Previous Enter=Continue F1=Help F2=Abort Space=More choices
```

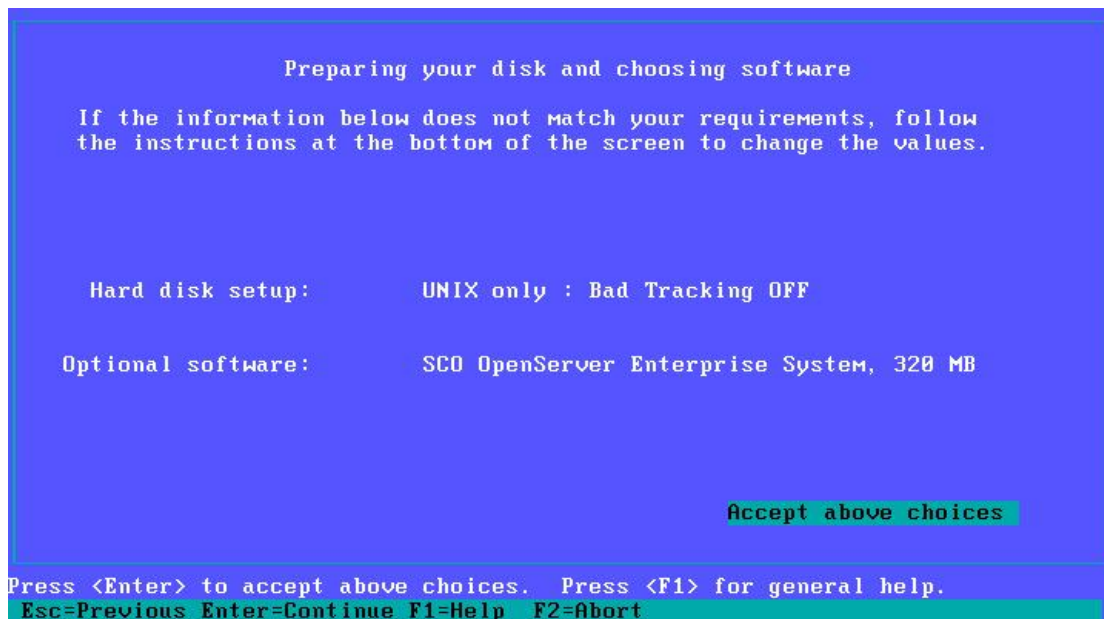

- 硬碟規劃與安裝軟體，按空白鍵進入 hard disk setup，請選擇 Use whole disk for UNIX(或者依照自身情況設定)，同時把 Disk 0 bad track type 設為 None(這個選項強烈建議設為 None，否則系統會做 bad block checking，需要很久的時間)



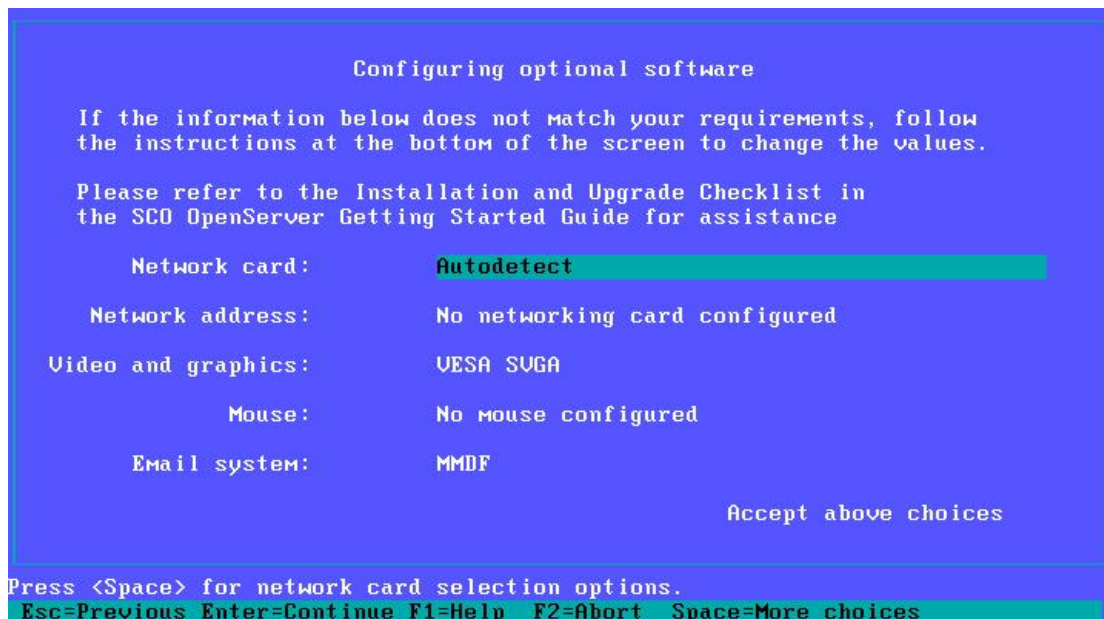
- 按空白鍵進入硬碟規劃畫面，請注意將 Disk 0 bad track type 設為 None



➤ 回到前一畫面



➤ 設定網路環境，直接自動偵測網路卡，並設定 TCP/IP 選項，選擇滑鼠設定與 Email system



- 按空白鍵進入 Network address 設定 TCP/IP，可以將 IPX/SPX 相關的設定改為 Deferred

```

Configuring your network

Setting network addresses for osr507.sco.com.tw

TCP/IP networking parameters:
      IP address:      192.168.1.35
      Net mask:       255.255.255.0
      Broadcast address: 192.168.1.255
      Gateway address: 192.168.1.1
      Primary nameserver address: 168.95.1.1
      Secondary nameserver address:

IPX/SPX networking parameters:
      IPX internal network number:  Deferred
      IPX network number:         Deferred
      IPX framing type:           Deferred

Accept above choices

Type in the IP address of the primary nameserver to service this client.
Esc=Default Enter=Continue F1=Help F2=Abort F5=Defer
    
```

- 回到前一畫面後，繼續設定滑鼠與 Email 系統(建議使用 Sendmail)

```

Configuring optional software

If the information below does not match your requirements, follow
the instructions at the bottom of the screen to change the values.

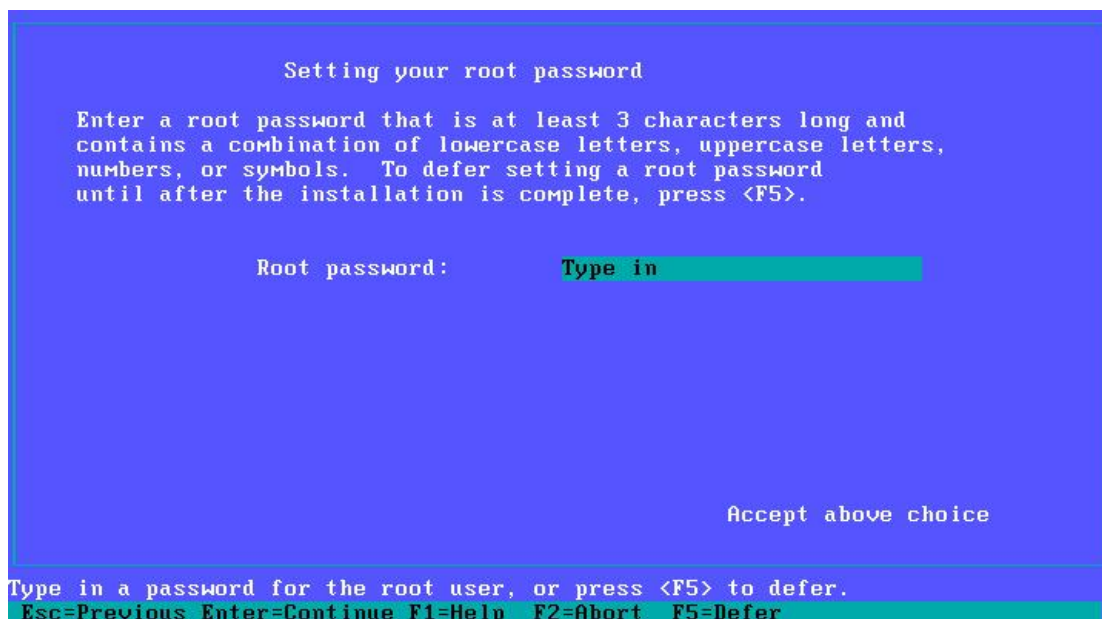
Please refer to the Installation and Upgrade Checklist in
the SCO OpenServer Getting Started Guide for assistance

      Network card:      AMD PCNet-PCI
      Network address:   TCP/IP configured
      Video and graphics: VESA SUGA
      Mouse:             USB Mouse
      Email system:      Sendmail

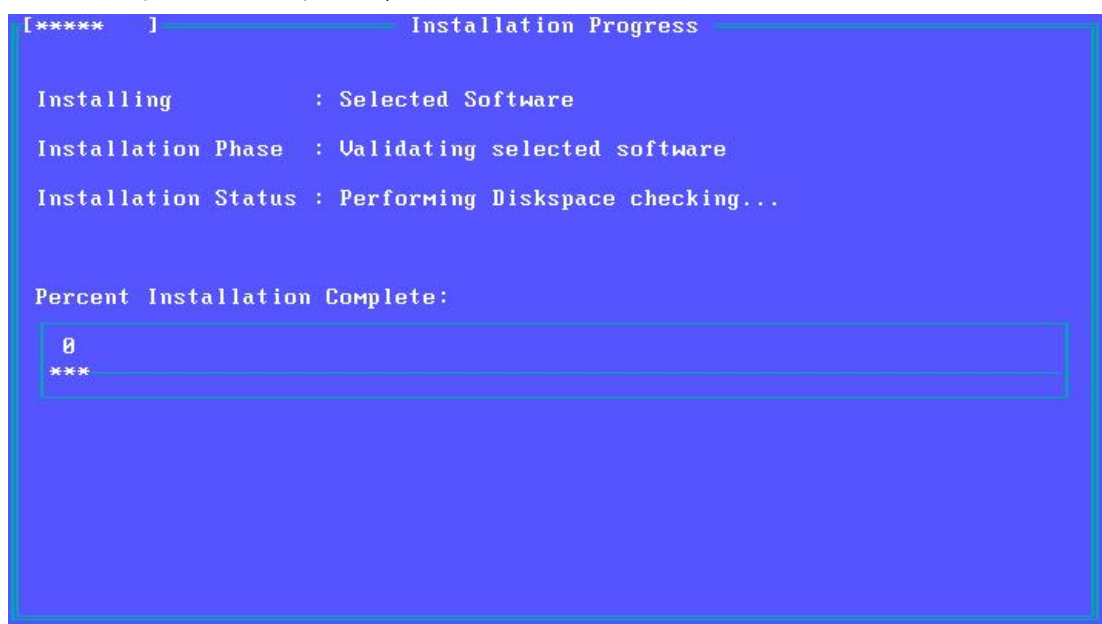
Accept above choices

Press <Space> to select a different email system.
Esc=Previous Enter=Continue F1=Help F2=Abort Space=More choices
    
```

➤ 輸入管理者密碼



➤ 接受後，就可以開始安裝了



以上步驟，以一般 Pentium 4 系統約需時 40 分鐘至 50 分鐘。

安裝完畢後，請上 <http://www.sco.com/support/download.html> 或 <ftp.sco.com> 下載相關 SCO 修正，例如 Maintenance Pack。

本文所提及之公司名稱與產品商標分屬各公司或個人所有。

文件提供：SCO TAIWAN 許景超(kevinhsu@sco.com)