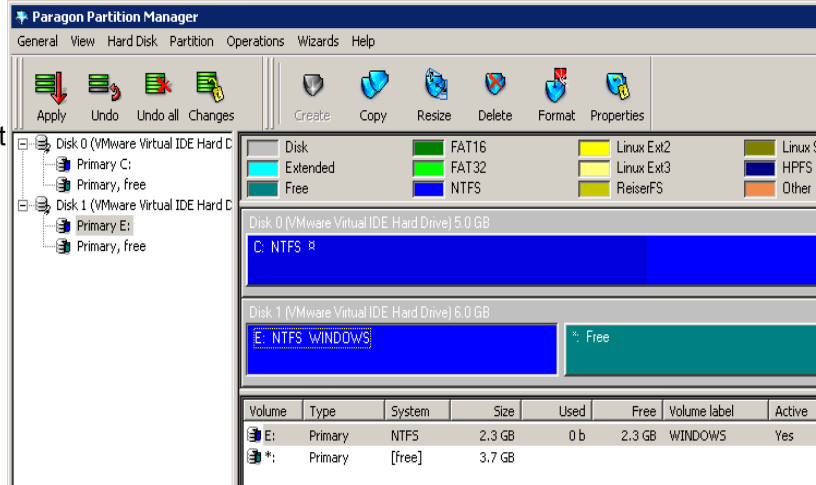


How to prepare your hard disk

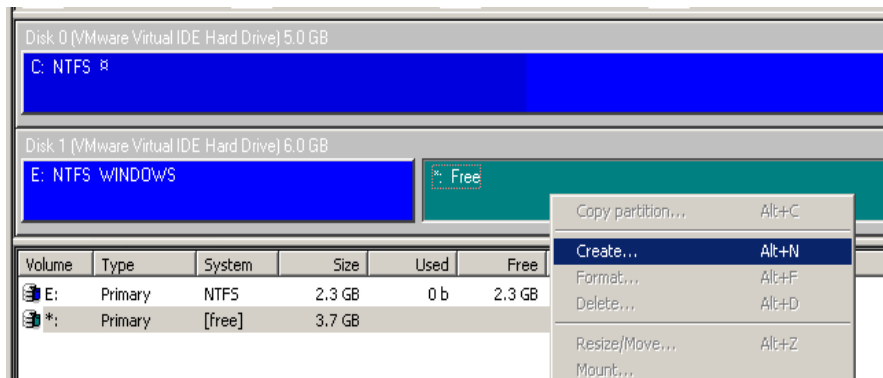
Windows XP (already installed) + OSX Dual Boot in a single drive.

Within windows XP:

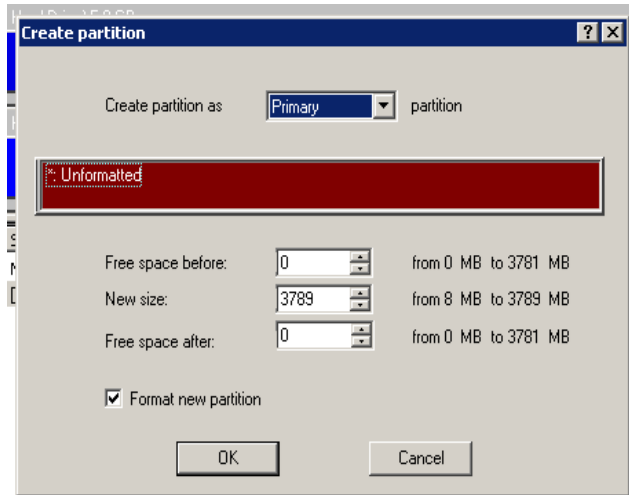
Get **Paragon Partition** manager, or something like it. It will list your disk and partitions. Select the HD you want to install OSX in. In this example the disk 01 is selected. Notice that it only contains the 'WINDOWS' partition. The rest is **free space**. If you dont have free space you would have to resize/delete one of your partitions.



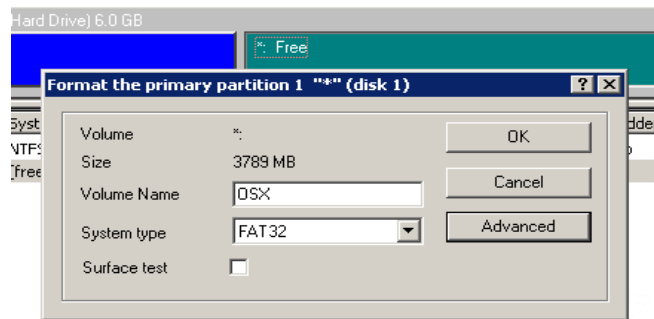
Do right click over the empty space in your hd, and select **'Create'** from the contextual menu.



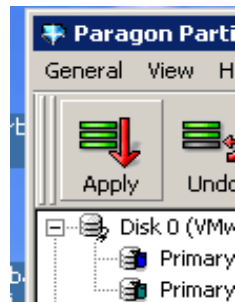
Define the size of your partition, check the **'Format new partition'** box and click OK.



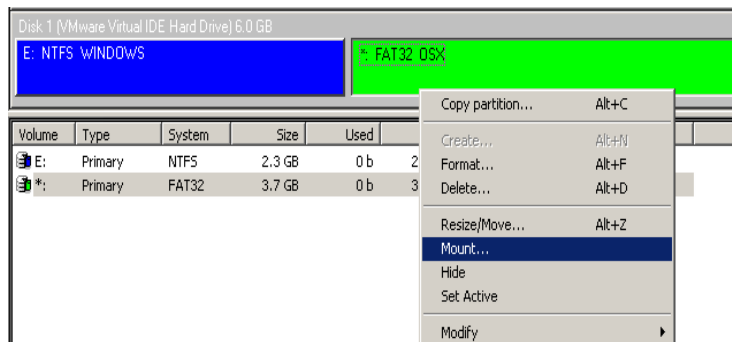
Give the partition a name, select **FAT32** as System type and click OK.



Then click the **'Apply'** button.



Your new partition is ready. Right click on it, and choose **'Mount'**. After the operation is finished. Close the program and shut down windows.



At this point restart your system with the OSX install DVD you should have burned already.

If everything went OK you should get to this window. Select your language and click the arrow.



.....wait a little bit...



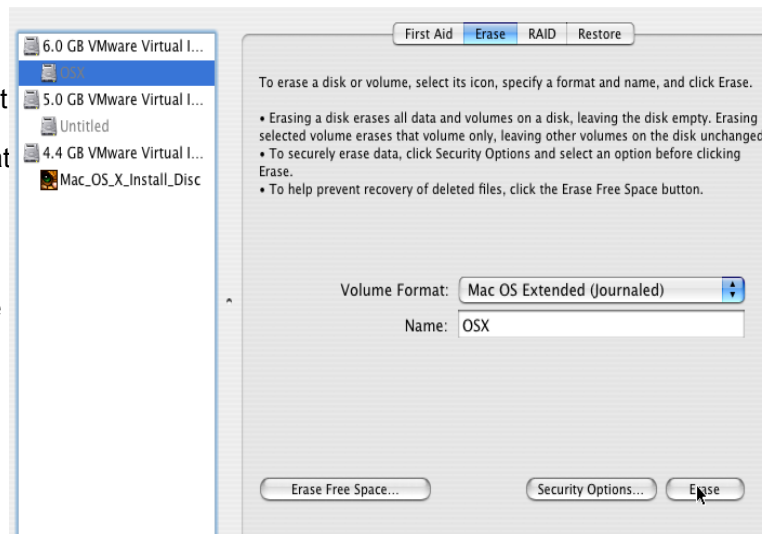
You would come to this screen. In the menu bar go to **Utilities/Disk Utility**.



Select the partition you created in windows from the column in the left, select the **'Erase'** tab, choose **'Mac OS Extended (journaled)'** as Volume Format and click the **'Erase'** button (lower right corner). You will be asked for a confirmation, click erase.

A progress bar will appear. Wait a few seconds until is done. Then you can close Disk Utility and you'll be back to the Welcome screen.

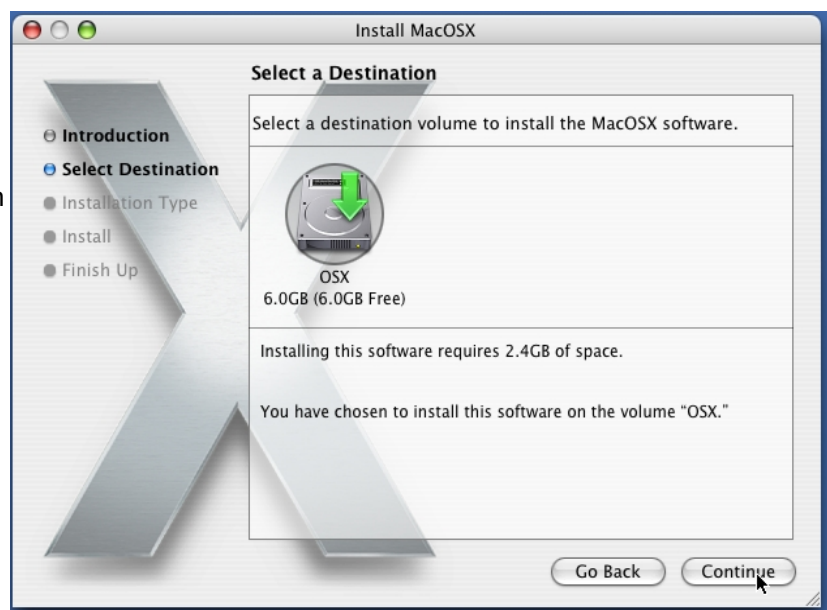
Be shure that thoption **'Master Boot Record'** (Partition Tab/Options) is lit before erase the partition.



Click **"Continue"**

You'll get to this screen and your partition would be ready to use. Select it and click **'Continue'** to go to the Customize menu....

If this didnt work see the appendix in the last page.



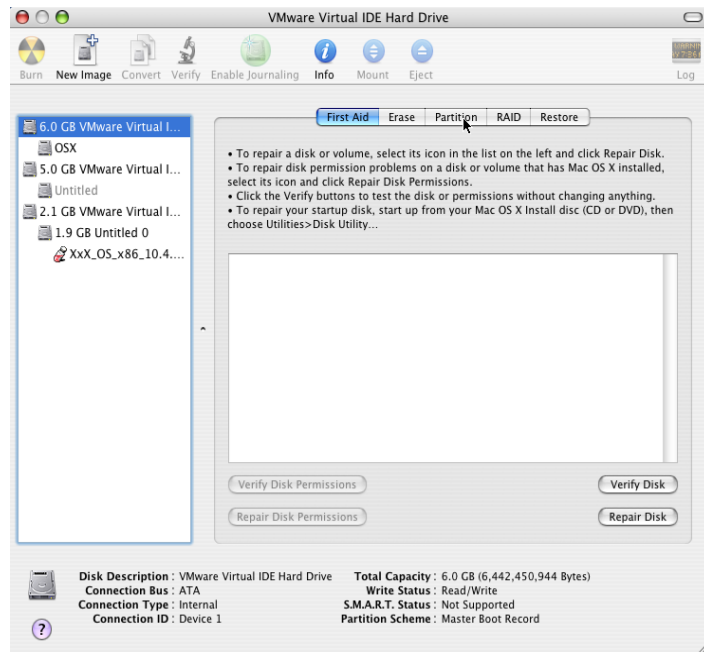
After the installation is finished and, if everything went OK, you will be able to boot both systems from the Darwin Bootloader (pressing F8 during the boot will take you to the menu). You can edit the boot.plist to set this as default (adding 'TimeOut' mod and the countdown time). At this point you could additionally install a boot selector like Acronis Boot Manager.

OSX single boot drive.

For a single boot drive I assume you want to have all partitions in HFS+ (OSX native file system). Be aware that with the following method **all the data in the disk will be erased**.

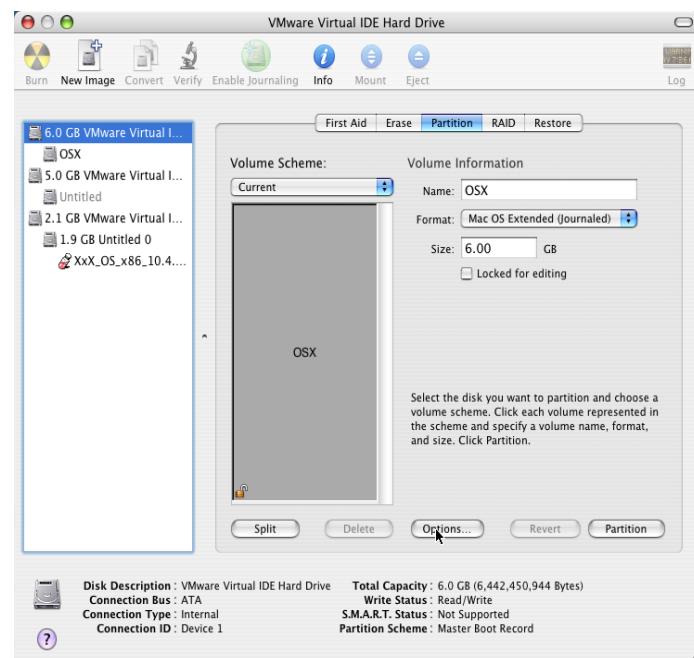
So, boot with the install disk. Open **DiskUtility** from the Utilities menu.

Select your disk from the left column and click on the **Partition** tab.



After you decide how many partitions you want to have, names and so, click the **Options** button.

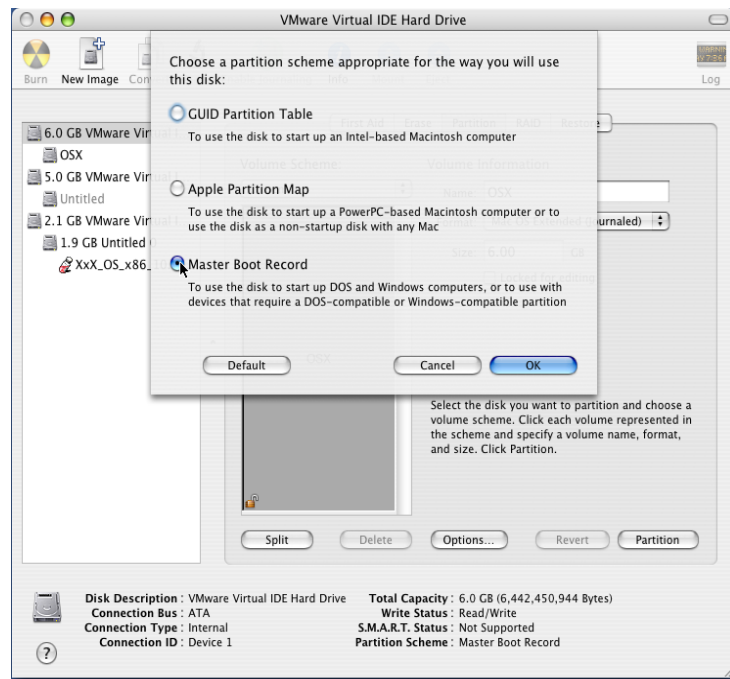
Note that you have to select the file system for each partition. Just choose '**Mac OS Extended (Journaled)**'.



This window will pop up. Select **'Master Boot Record'** and click OK.

Then click the **Partition** button (right-down corner). You would be asked for a confirmation. Click **'Partition'** again.

Close **DiskUtility** and continue with the installation. Your newly formatted disk should appear in the installation target devices.



Appendix: Alternative method for creating an OSX partition on windows.

In windows, with the disk manager, erase the OSX partition; dont give any format. Make shure it appears as unpartitioned/free space. Apply changes, close the app.

Go to Start menu/run and type command [enter]. Command line window will open.

type:

Diskpart [enter]

List disk [enter] - it lists all disk in your system.

select disk N [enter] (N=your HD nr. , 0 (zero) if you have only one HD)

list partition [enter] - it shows the partitions on the selected disk.

create partition primary id=af [enter] - it will create a partition out of the unpartitioned space.

list partition [enter] - now the new partition should be listed among the others.

exit [enter]

now go back to page 3 and follow the instructions. You should be able to erase the partition you just created with DiskUtility (choose the hfs+ extended file system before).